

# Exhibit Y.

## AC Commercial Site National Wetlands Inventory Map

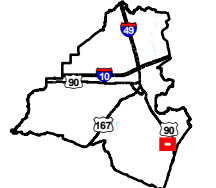




# AC Commercial Site National Wetlands Inventory Map

AC Commercial Site  
Lafayette Parish, LA

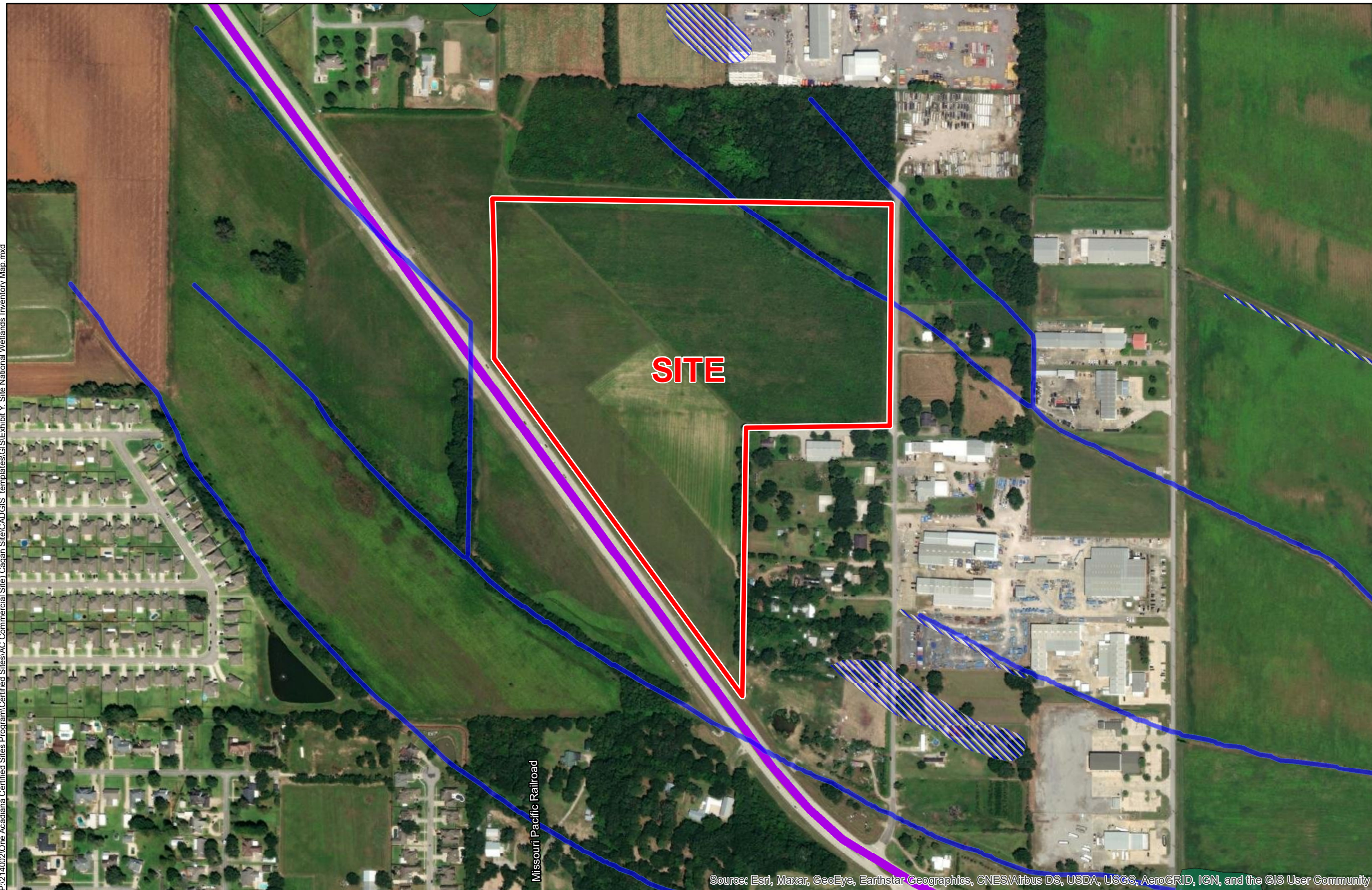
One Acadiana



Lafayette Parish

## LEGEND

- Site Boundary (44.94 Ac.±)
- Wetland Type**
- Freshwater Emergent Wetland
- Freshwater Forested/Shrub Wetland
- Riverine
- Major Roads**
- 4-Lane State Highway



P:\214002\One Acadiana Certified Sites Program\Certified Sites\AC Commercial Site\Cadman Site\CADGIS templates\GIS\Exhibit Y\_Site National Wetlands Inventory Map.mxd

Source: Esri, Maxar, GeoEye, Earthstar Geographics, CNES/Airbus DS, USDA, USGS, AeroGRID, IGN, and the GIS User Community



Date:	7/7/2021
Project Number:	214002
Drawn By:	SEW
Checked By:	EEB

### General Notes:

1. No attempt has been made by CSRS, Inc. to verify site boundary, title, actual legal ownership, deed restrictions, servitudes, easements, or other burdens on the property, other than that furnished by the client or his representative.
2. Transportation data from 2013 TIGER datasets via U.S. Census Bureau at <ftp://ftp2.census.gov/geo/tiger/TIGER2013>.
3. National Wetlands Inventory (NWI) data current as of May 2016 as downloaded from [http://www.fws.gov/wetlands/Downloads/State/LA\\_wetlands.zip](http://www.fws.gov/wetlands/Downloads/State/LA_wetlands.zip).
4. 2015 aerial imagery from USDA-APFO National Agricultural Inventory Project (NAIP) and may not reflect current ground conditions.



Scale 1:5,000  
0 260 520 Feet

