



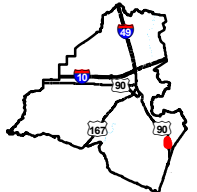
Exhibit X.
Loul's Landing
Soils Conservation Service Map



Loul's Landing Soils Conservation Service Map

Loul's Landing
Lafayette Parish, LA

One Acadiana



Lafayette Parish

LEGEND

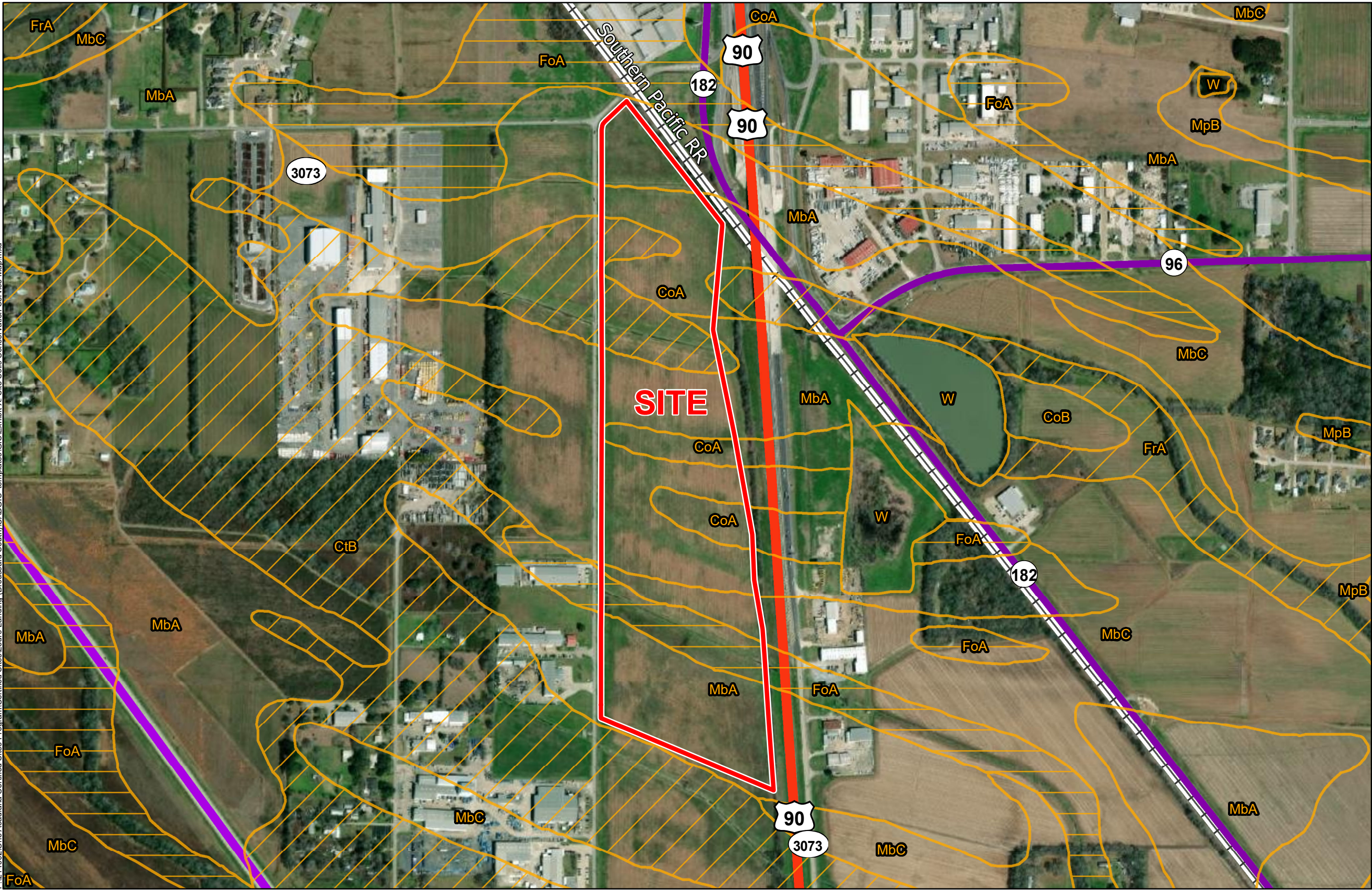
Site Boundary (64.80 Ac. ±)

Soil Type

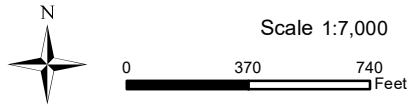
- CoA - Coteau silt loam, 0 to 1 percent slopes, (8% Hydric)
- CoB - Coteau silt loam, 1 to 3 percent slopes, (10% Hydric)
- CtB - Coteau-Frost complex, gently undulating, (35% Hydric)
- FoA - Frost silt loam, 0 to 1 percent slopes, (90% Hydric)
- FrA - Frost silt loam, 0 to 1 percent slopes, occasionally flooded, (90% Hydric)
- MbA - Memphis silt loam, 0 to 1 percent slopes, (5% Hydric)
- MbC - Memphis silt loam, 1 to 5 percent slopes
- MpB
- W - Water

Existing Roadway

- US Highway
- 4-Lane State Highway
- Urban State Highway
- Railroad



General Notes:
 1. No attempt has been made by CSRS, Inc. to verify site boundary, title, actual legal ownership, deed restrictions, servitudes, easements, or other burdens on the property, other than that furnished by the client or his representative.
 2. Transportation data from 2013 TIGER datasets via U.S. Census Bureau at ftp2.census.gov/geo/tiger/TIGER2013.
 3. 2015 aerial imagery from USDA-APFO National Agricultural Inventory Project (NAIP) and may not reflect current ground conditions.
 4. Soils data from USDA SSURGO website: <http://websoilsurvey.sc.egov.usda.gov/App/WebSoilSurvey.aspx>.



Date: 6/6/2022
 Project Number: 214002
 Drawn By: SEW
 Checked By: EEB



P:\214002\One Acadiana Certified Sites Program\Certified Sites\Loul's Landing (Broussard South)\CADGIS templates\GIS\Exhibit X_Site Soils Conservation Service Map.mxd