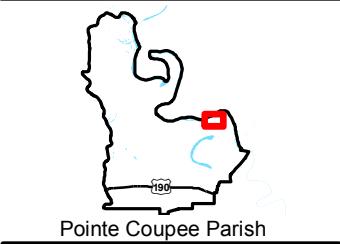


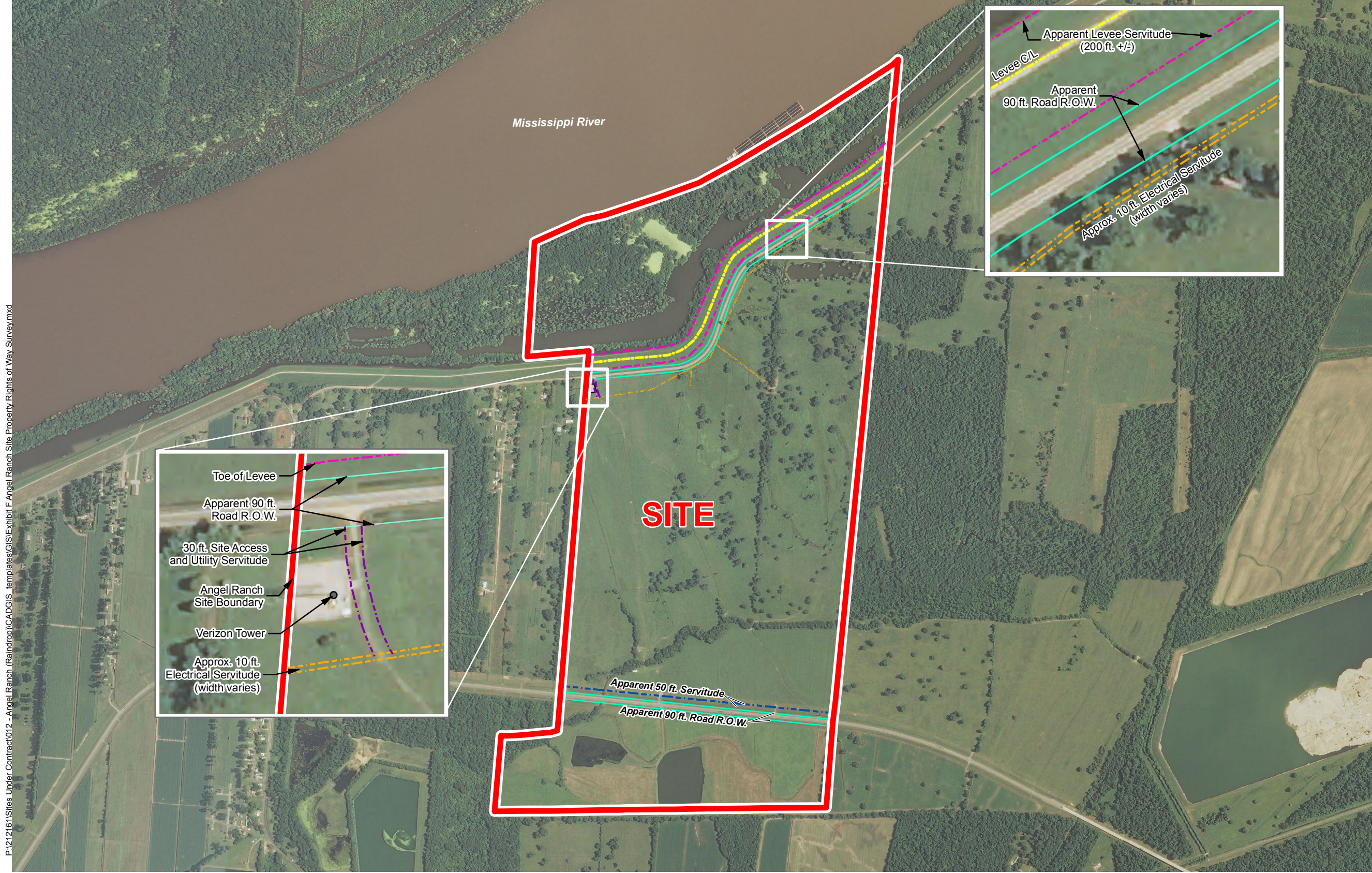
Exhibit F. Angel Ranch Site Property Rights of Way Exhibit

Property Rights of Way
Angel Ranch Site
Pointe Coupee Parish, LA

BRAC



- Legend**
- Site Boundary (731.56 Acres +/-)
 - Approx. Elec. Serv. (width varies)
 - Toe of Levee (App. 200' Serv)
 - Apparent 50 ft. Servitude
 - C/L of Levee
 - 30 ft. Site Access and Utility Servitude
 - Apparent 90 ft. Road R.O.W.



P:\212161\Sites Under Contract\012 - Angel Ranch (Raindrop)\CAD\GIS Templates\GIS\Exhibit F Angel Ranch Site Property Rights of Way Survey.mxd

- General Notes:
- No attempt has been made by CSRS, Inc. to verify title, actual legal ownership, deed restrictions, servitudes, easements, or other burdens on the property, other than that furnished by the client or his representative.
 - Servitudes noted "Apparent" are visually noted from aerial. No documentation included from Assessor Data to verify accuracy.
 - Verizon Tower Site maps included in "Exhibit A. Angel Ranch Site Partial Title Abstract"



Date: 3/3/2015
Project Number: 212161.20.012
Drawn By: MAT
Checked By: TMG

CSRS
IMAGINE SHAPE DELIVER
6767 Perkins Road Suite 200 Baton Rouge, LA 70808
Telephone: 225 769-0546 Fax: 225 767-0060
www.csrsonline.com