

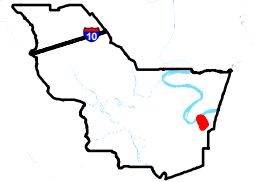
Exhibit T. Belle Grove Site Soils Conservation Service Map



Belle Grove Site Soils Conservation Service Map

Belle Grove Site
Iberville Parish, LA

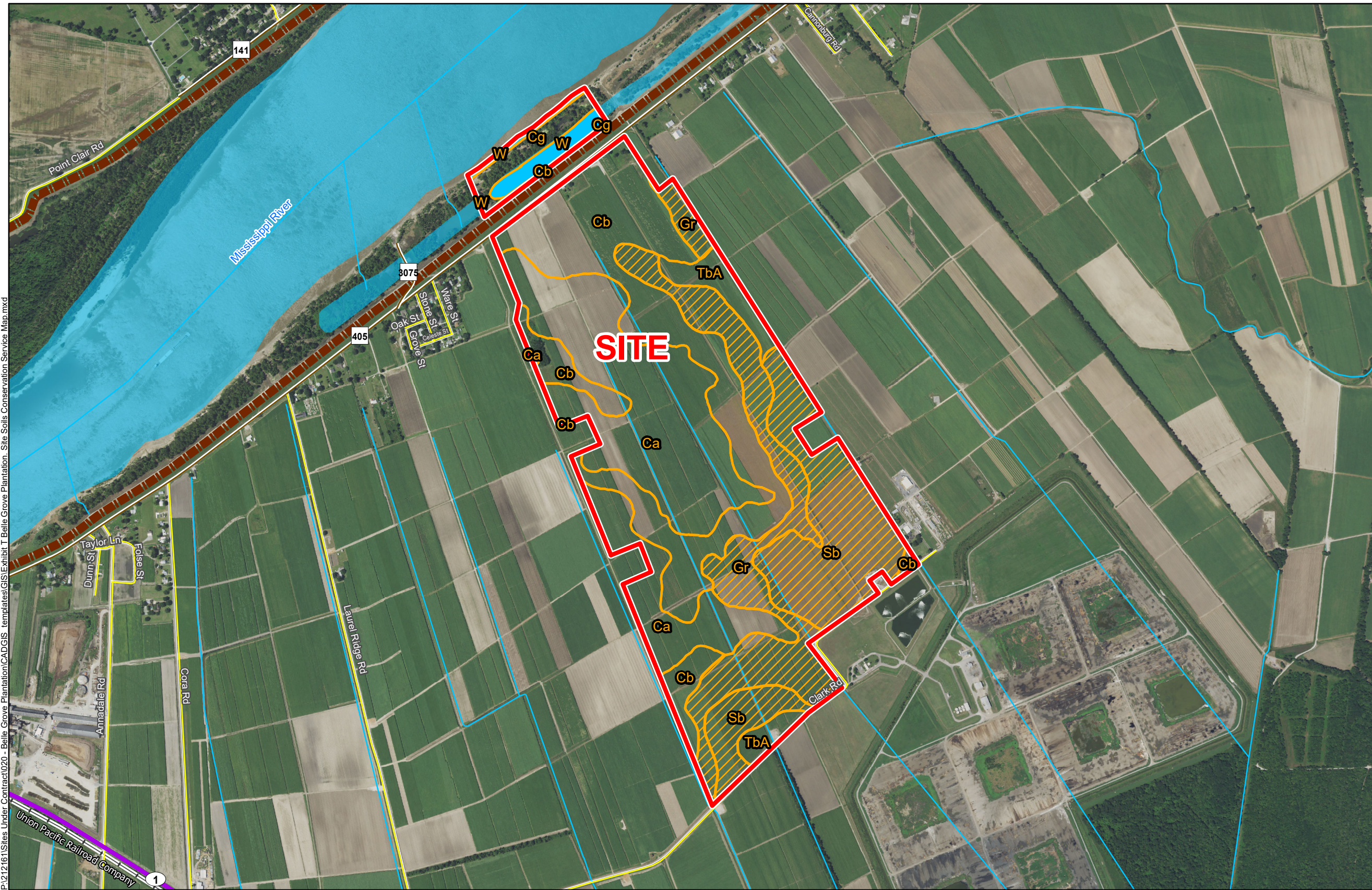
BRAC



Iberville Parish

LEGEND

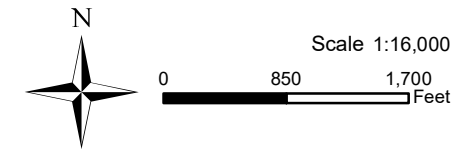
- Site Boundary (555.19 Ac. +/-)
- Soil Type**
- Ca - Cancienne silt loam, 0 to 1 percent slopes (2% hydric)
- Cb - Cancienne silty clay loam, 0 to 1 percent slopes (10% hydric)
- Cg - Cancienne and Carville soils, undulating, frequently flooded (60% hydric)
- Gr - Gramercy silty clay loam, 0 to 1 percent slopes (92% hydric)
- Sb - Schriever clay, 0 to 1 percent slopes (98% hydric)
- TbA - Thibaut clay (13% hydric)
- W - Water
- Existing Roadway**
- 4-Lane State Highway
- Rural State Highway
- Local Roads
- Railroad
- Levee
- Waterbody
- Stream



P:\212161\Sites Under Contract\020 - Belle Grove Plantation\CAD\GIS templates\GIS\Exhibit T Belle Grove Plantation_Site Soils Conservation Service Map.mxd

General Notes:

1. No attempt has been made by CSRS, Inc. to verify site boundary, title, actual legal ownership, deed restrictions, servitudes, easements, or other burdens on the property, other than that furnished by the client or his representative.
2. Transportation data from 2013 TIGER datasets via U.S. Census Bureau at [ftp://ftp2.census.gov/geo/tiger/TIGER2013](http://ftp2.census.gov/geo/tiger/TIGER2013).
3. Soils data from USDA SSURGO website: <http://websoilsurvey.sc.egov.usda.gov/App/WebSoilSurvey.aspx>.
4. 2015 aerial imagery from USDA-APFO National Agricultural Inventory Project (NAIP) and may not reflect current ground conditions.



Baton Rouge Area Chamber.

Date:	3/27/2017
Project Number:	212161
Drawn By:	TMK
Checked By:	JAY

CSRS
IMAGINE SHAPE DELIVER

6767 Perkins Road Suite 200 Baton Rouge, LA 70808
Telephone: 225 769-0546 Fax: 225 767-0060
www.csrsonline.com