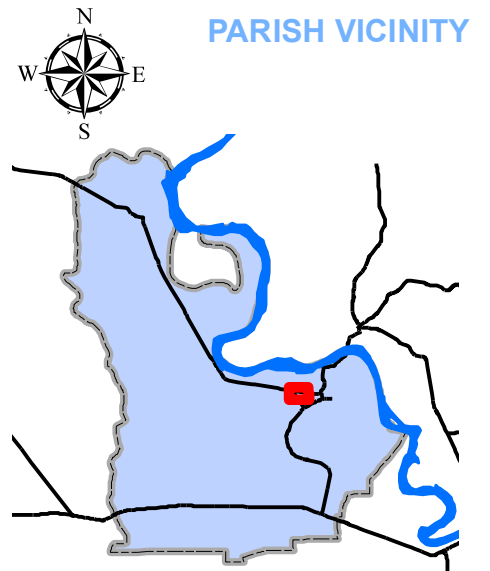


Exhibit W. New Roads Industrial Park Proposed FEMA 100 year Flood Plain Map



- Legend
- Poydras Site
 - School
 - Church
 - Cemetery
 - Truck Route
 - Parish Boundary

CONFIDENTIAL

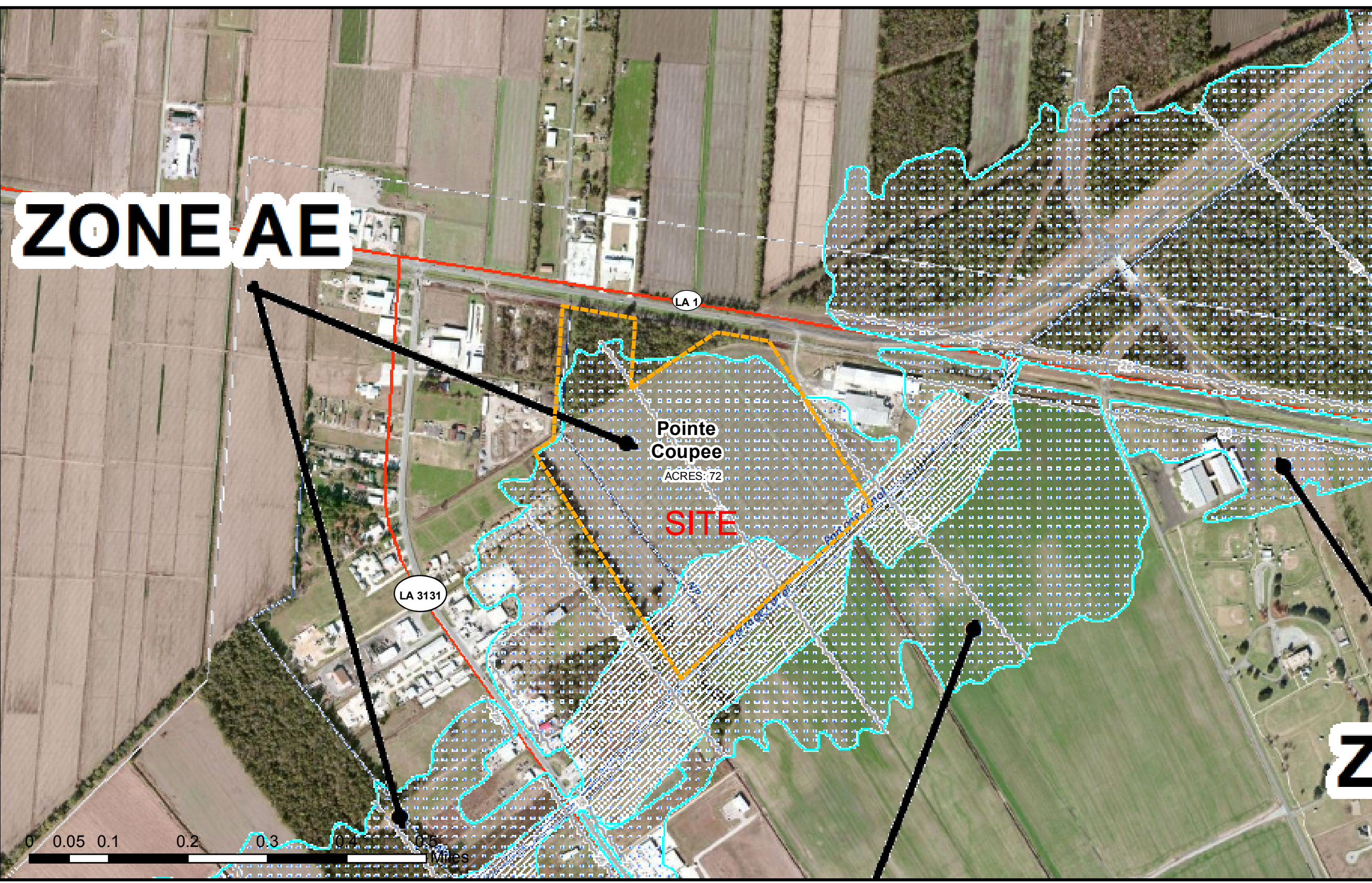
Source
 Parcel data supplied by Pointe Coupee Assessor.
 Parcel acreage values approximated.
 GIS features acquired from public domain state and federal data sources (GNIS, LOSCO, US Census Bureau).

Title
**POINTE COUPEE PARISH
 NEW ROADS
 INDUSTRIAL PARK**

Project

GIS Analyst	WBM	Date	9/13/12
LEO Project No.	12-003	Map No.	Version
			001

LEO, LLC
 17170 Perkins Road
 Baton Rouge, Louisiana 70810
 (225) 281-4202



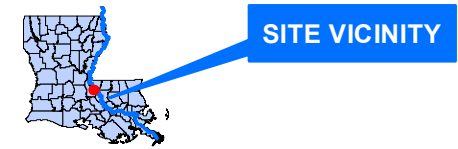
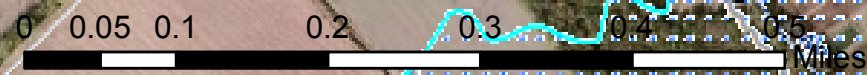
ZONE AE

Pointe Coupee
 ACRES: 72

SITE

LA 3131

LA 1



**SITE PROFILE: New Roads Industrial Park
 Acres: 72**