

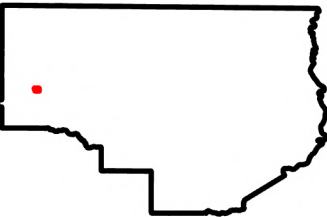
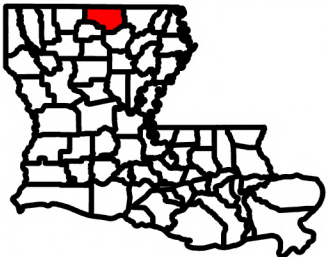
Exhibit W. BIDCO Site Soils Conservation Service Map



BIDCO Site Soils Conservation Service Map

Site Exhibit for
BIDCO Site
Union Parish, LA

NELA



Legend

BIDCO Site Boundary
(±142.25 Ac)

Union Parish Soils

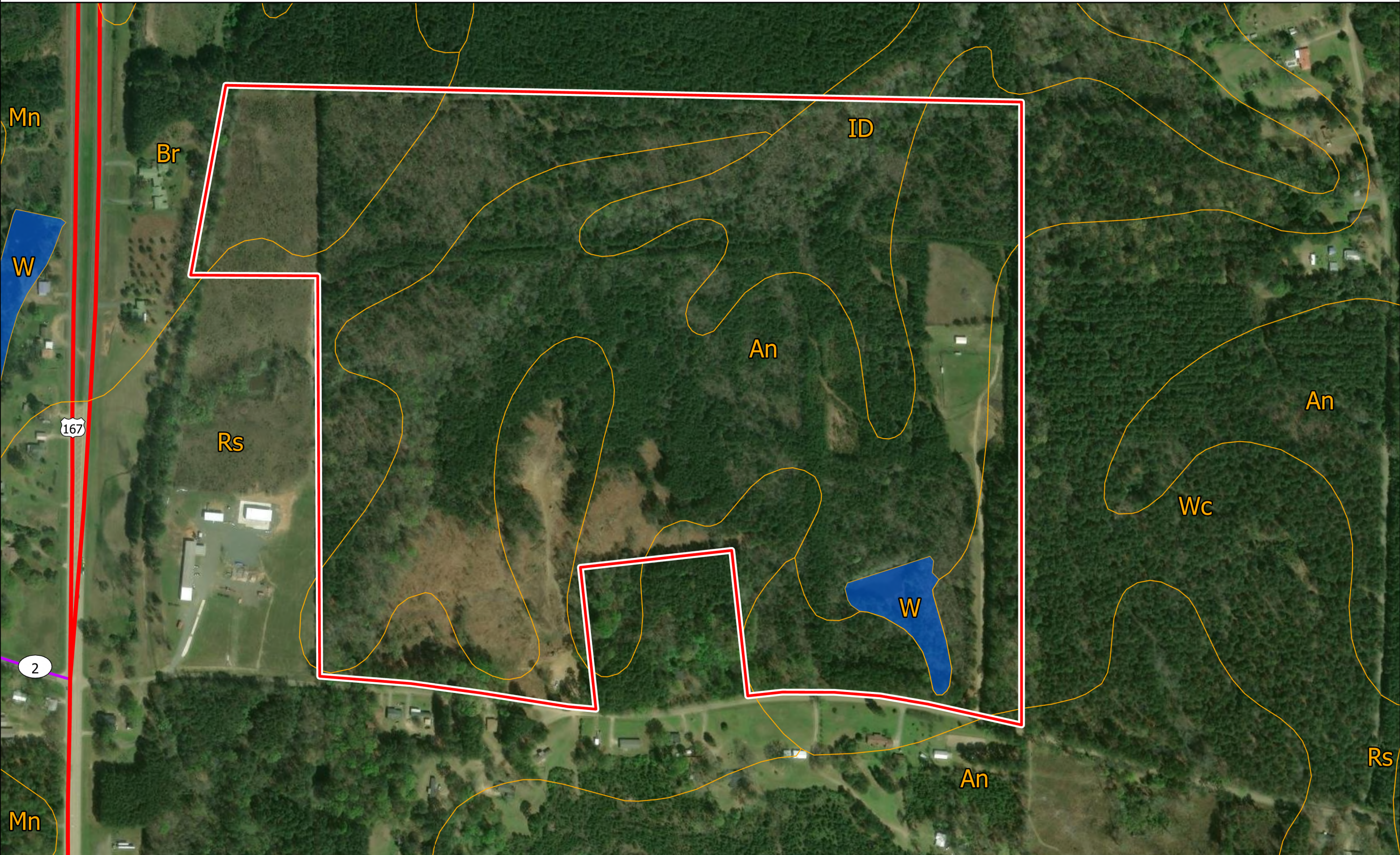
- An- Angle very fine sandy loam
- Br- Briley loamy fine sand
- ID- Iuka-Dela complex
- Mn- Malbis fine sandy loam
- Rs- Ruston fine sandy loam
- W
- Wc- Warnock fine sandy loam

Major Road

- US Highway
- State Highway



Date: 9/2/2025
Project Number: 222263
Drawn By: CFO
Checked By: EEB



- General Notes:
1. The information presented herein is for planning purposes only. Further detailed due diligence MUST be completed prior to making decisions regarding the site.
 2. No attempt has been made by CSRS, Inc. to verify site boundary, title, actual legal ownership, deed restrictions, servitudes, easements, or other burdens on the property, other than that furnished by the client or his representative.
 3. Transportation data from 2023 TIGER datasets via U.S. Census Bureau at <https://www.census.gov/geographies/mapping-files/time-series/geo/tiger-line-file.html>.
 4. Aerial imagery is compiled from multiple different sources to create one cohesive image and may not reflect current ground conditions.
 5. Soils data is from the USDA-NRCS Web Soil Survey website: <https://websoilsurvey.nrcs.usda.gov/app/>.

