

Churchill Technology & Business Park

Exhibit 07

Property Rights of Way Exhibit



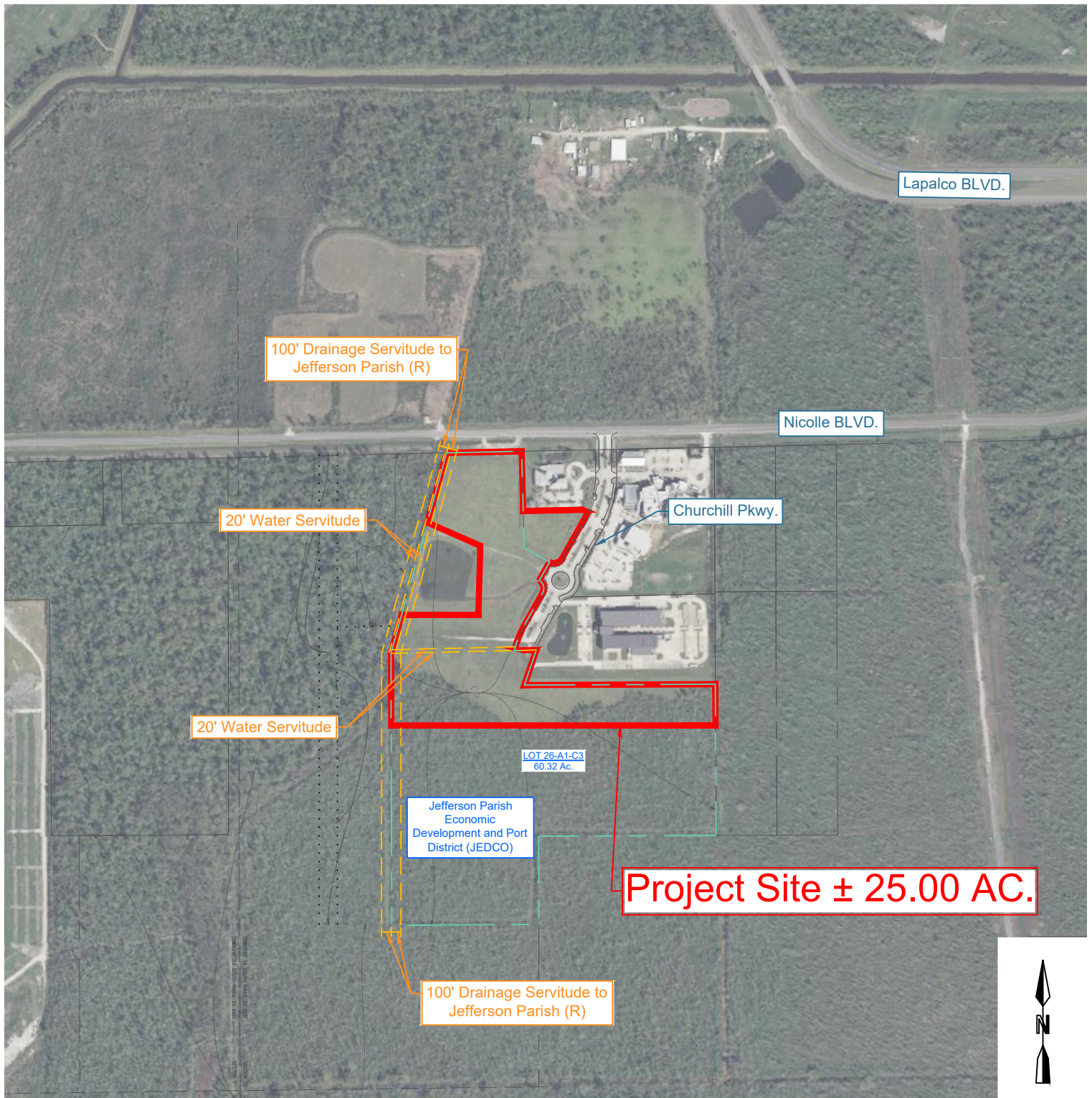
JEDCO

Jefferson Parish Economic Development Commission



GREATER NEW ORLEANS
INC
REGIONAL ECONOMIC DEVELOPMENT

Property Rights of Way Exhibit



GREATER NEW ORLEANS
INC
REGIONAL ECONOMIC DEVELOPMENT



DDG
1 GALLERIA BLVD | SUITE 1506
METAIRIE, LA
504.434.6565

**Churchill Technology
and Business Park**
Avondale, LA 70094
Jefferson Parish



PROJECT NO. 23-1544
09-05-2024
CHECKED SMT
DRAWN BY JPO

