

# Exhibit R. Bratton Family Farms Roadway Transportation Infrastructure Wide Map





# Roadway Transportation Infrastructure Wide Map

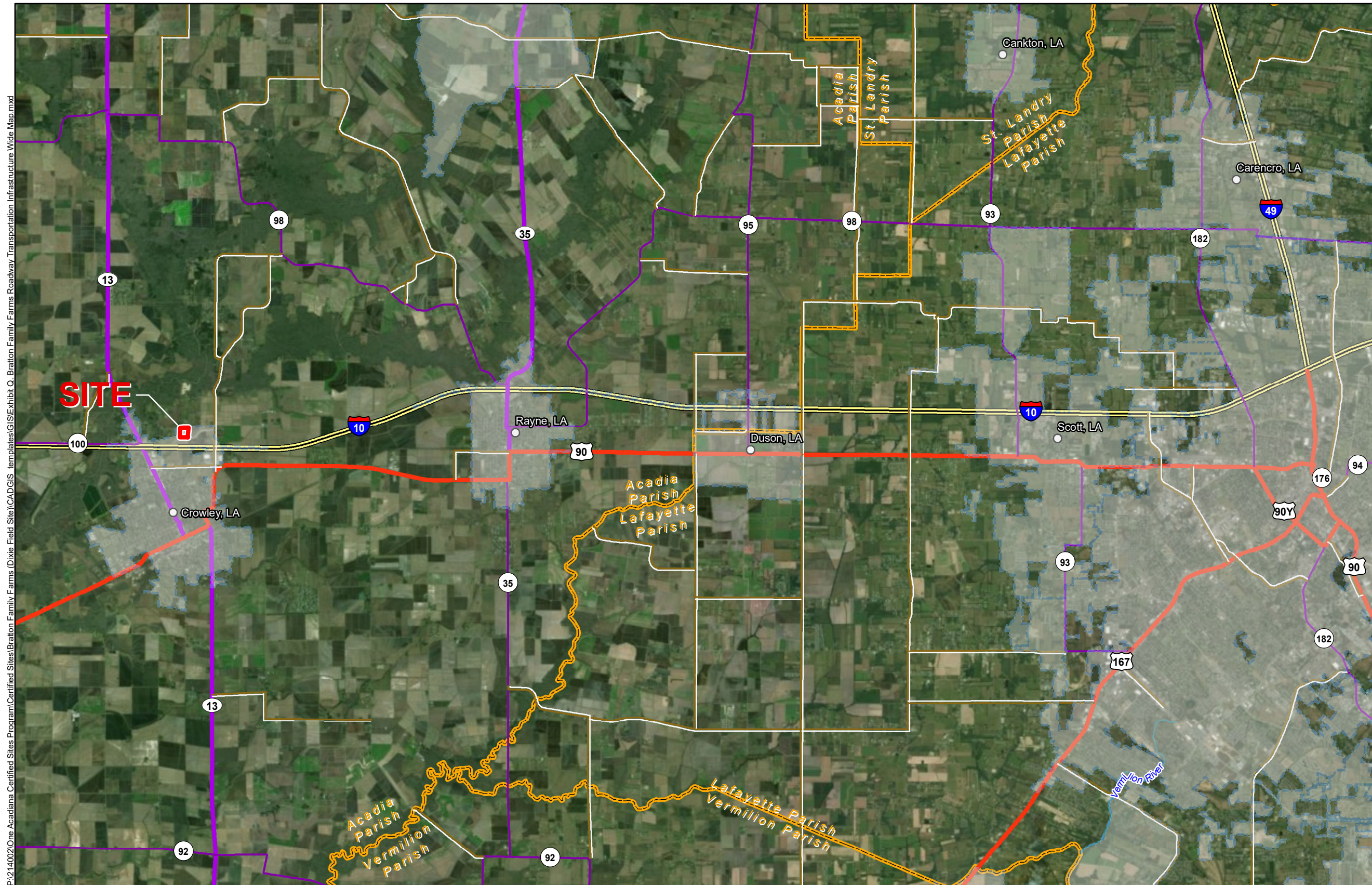
Bratton Family Farms  
Site  
Acadia Parish, LA

One Acadiana



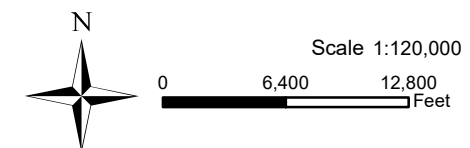
**LEGEND**

- Site Boundary
- City Limits
- Parish Boundary
- Cities
- Existing Roadway**
- Interstate
- US Highway
- 4-Lane State Highway
- Urban State Highway
- Rural State Highway
- Waterbody



P:\214002\One Acadiana Certified Sites Program\Certified Sites\Bratton Family Farms (Dixie Field Site)\CAD\GIS templates\GIS\Exhibit Q. Bratton Family Farms Roadway Transportation Infrastructure Wide Map.mxd

- General Notes:
1. No attempt has been made by CSRS, Inc. to verify site boundary, title, actual legal ownership, deed restrictions, servitudes, easements, or other burdens on the property, other than that furnished by the client or his representative.
  2. Transportation data from 2013 TIGER datasets via U.S. Census Bureau at [ftp://ftp2.census.gov/geo/tiger/TIGER2013](http://ftp2.census.gov/geo/tiger/TIGER2013).
  3. 2015 aerial imagery from ESRI Online Basemaps and may not reflect current ground conditions.



Date:	3/23/2018
Project Number:	214002
Drawn By:	AMB
Checked By:	JAY

**CSRS**  
IMAGINE SHAPE DELIVER  
6767 Perkins Road Suite 200 Baton Rouge, LA 70808  
Telephone: 225 769-0546 Fax: 225 767-0060  
[www.csronline.com](http://www.csronline.com)