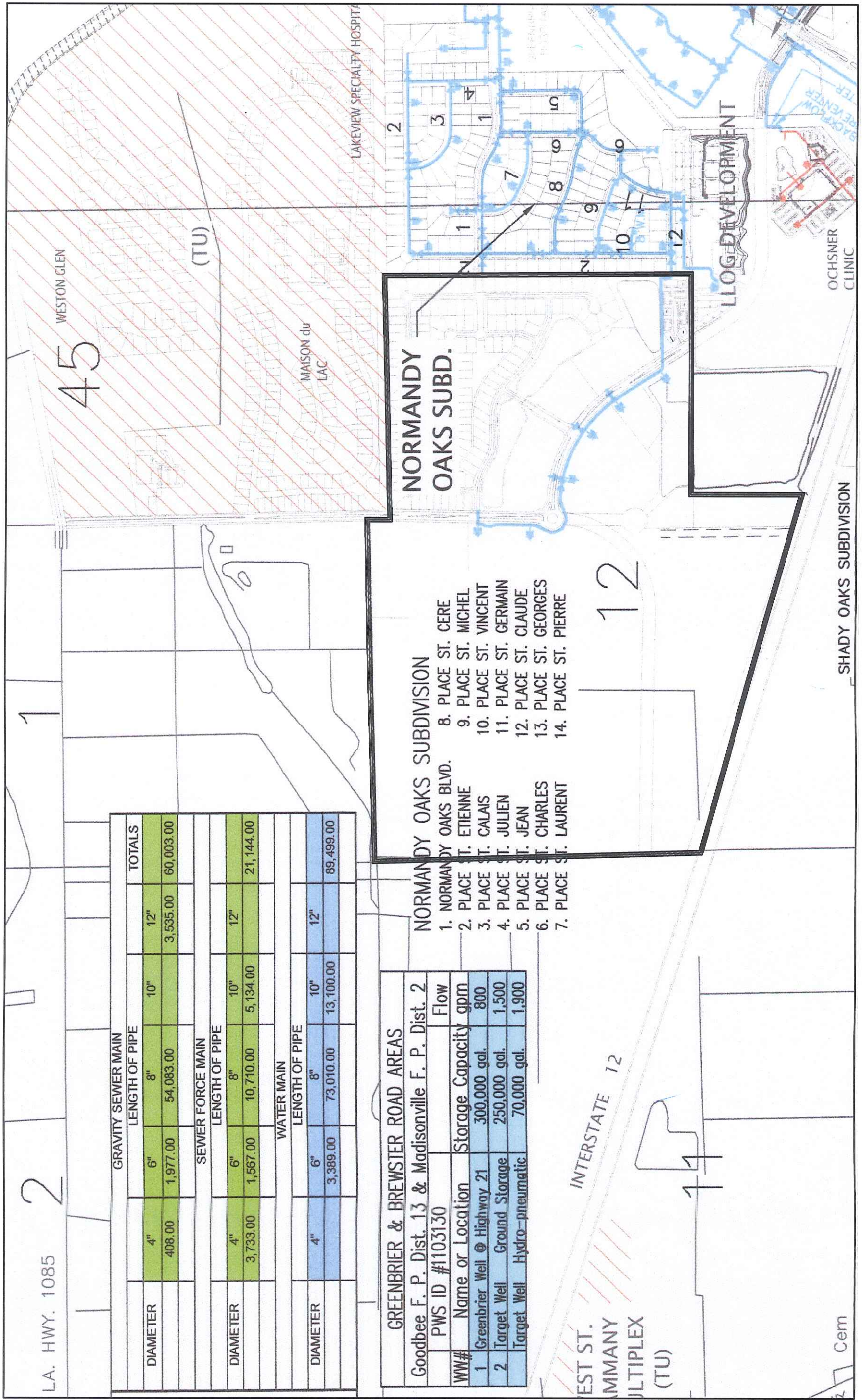


EXHIBIT 30c - Water Infrastructure



L.A. HWY. 1085

2

GRAVITY SEWER MAIN			
DIAMETER	LENGTH OF PIPE	DIAMETER	TOTALS
4"	408.00	10"	
6"	1,977.00	12"	3,535.00
8"	54,083.00		60,003.00
SEWER FORCE MAIN			
DIAMETER	LENGTH OF PIPE	DIAMETER	TOTALS
4"	3,733.00	10"	
6"	1,567.00	12"	21,144.00
8"	10,710.00		
10"	5,134.00		
WATER MAIN			
DIAMETER	LENGTH OF PIPE	DIAMETER	TOTALS
4"	3,389.00	10"	
6"	73,010.00	12"	89,499.00
8"	13,100.00		

GREENBRIER & BREWSTER ROAD AREAS
 Goodbee F. P. Dist. 13 & Madisonville F. P. Dist. 2
 PWS ID #1103130

WW#	Name or Location	Storage Capacity	Flow
1	Greenbrier Well @ Highway 21	300,000 gal.	800
2	Target Well Ground Storage	250,000 gal.	1,500
	Target Well Hydro-pneumatic	70,000 gal.	1,900

NORMANDY OAKS SUBDIVISION

1. NORMANDY OAKS BLVD.
2. PLACE ST. ETIENNE
3. PLACE ST. CALAIS
4. PLACE ST. JULIEN
5. PLACE ST. JEAN
6. PLACE ST. CHARLES
7. PLACE ST. LAURENT
8. PLACE ST. CERE
9. PLACE ST. MICHEL
10. PLACE ST. VINCENT
11. PLACE ST. GERMAIN
12. PLACE ST. CLAUDE
13. PLACE ST. GEORGES
14. PLACE ST. PIERRE

12

NORMANDY OAKS SUBD.

INTERSTATE 12

EST ST.
 MMANY
 MULTIPLEX
 (TU)

Cem

WESTON GLEN

45

(TU)

MAISON du LAC

LAKEVIEW SPECIALTY HOSPITAL

LLOG DEVELOPMENT

OCHSNER CLINIC

SHADY OAKS SUBDIVISION

Nord du Lac