



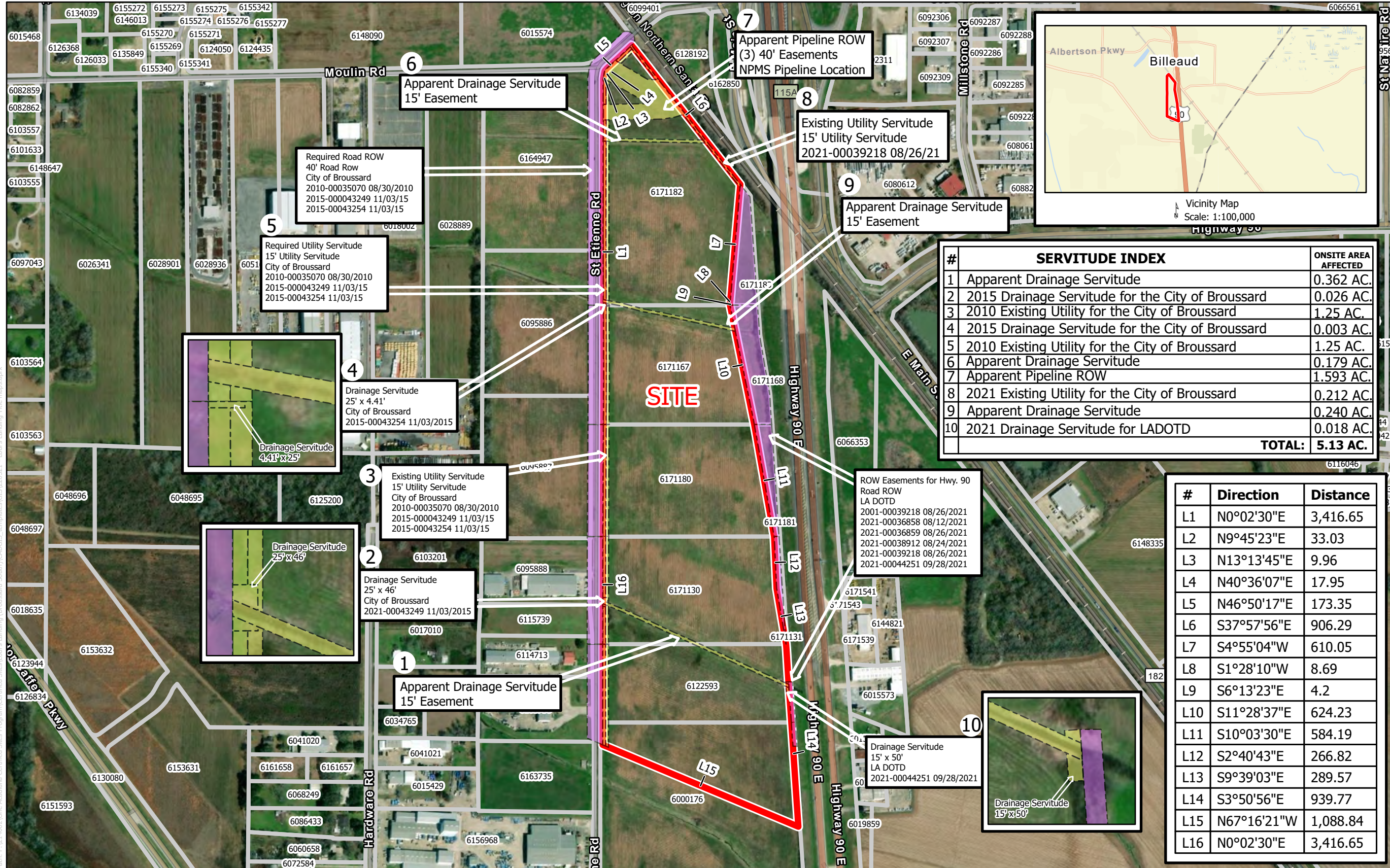
Exhibit E.

Loul's Landing

Property Rights of Way Exhibit



Loul's Landing Property Rights of Way Exhibit

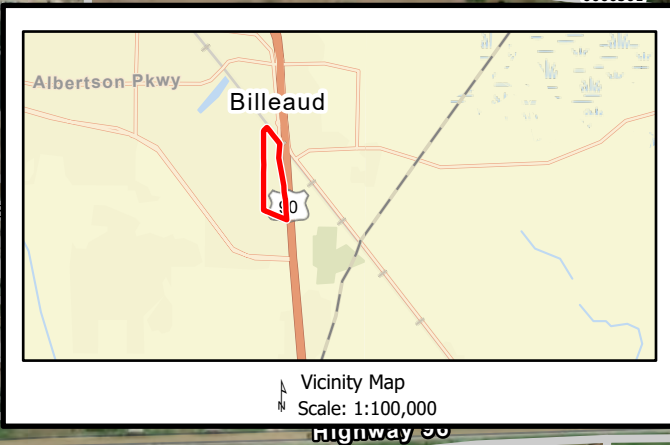


8555 United Plaza Blvd.
Baton Rouge, Louisiana, 70809
Telephone: 225-831-2163
www.csrinc.com

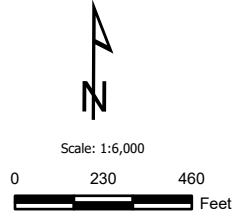
Project:

Loul's Landing
Lafayette Parish, Louisiana

Client:



#	SERVITUDE INDEX	ONSITE AREA AFFECTED
1	Apparent Drainage Servitude	0.362 AC.
2	2015 Drainage Servitude for the City of Broussard	0.026 AC.
3	2010 Existing Utility for the City of Broussard	1.25 AC.
4	2015 Drainage Servitude for the City of Broussard	0.003 AC.
5	2010 Existing Utility for the City of Broussard	1.25 AC.
6	Apparent Drainage Servitude	0.179 AC.
7	Apparent Pipeline ROW	1.593 AC.
8	2021 Existing Utility for the City of Broussard	0.212 AC.
9	Apparent Drainage Servitude	0.240 AC.
10	2021 Drainage Servitude for LADOTD	0.018 AC.
TOTAL:		5.13 AC.



Revisions:

#	Date	Description

LEGEND Key Plan:

- Site Boundary (64.80 Ac. ±)
- Parcel
- Plotted Right of Way
- Off Site Right Of Way
- On Site Right Of Way

#	Direction	Distance
L1	N0°02'30"E	3,416.65
L2	N9°45'23"E	33.03
L3	N13°13'45"E	9.96
L4	N40°36'07"E	17.95
L5	N46°50'17"E	173.35
L6	S37°57'56"E	906.29
L7	S4°55'04"W	610.05
L8	S1°28'10"W	8.69
L9	S6°13'23"E	4.2
L10	S11°28'37"E	624.23
L11	S10°03'30"E	584.19
L12	S2°40'43"E	266.82
L13	S9°39'03"E	289.57
L14	S3°50'56"E	939.77
L15	N67°16'21"W	1,088.84
L16	N0°02'30"E	3,416.65

GENERAL NOTES:

- No attempt has been made by CSRS, Inc. to verify title, actual legal ownership, deed restrictions, servitudes, easements, or other burdens on the property, other than that furnished by the client or their representatives.
- The depicted exhibit is based on the Lafayette Parish Clerk of Court Recordings researched from June 27, 1913 to January 06, 2021.
- This exhibit is not a property boundary survey, and is not intended to meet the Louisiana standards of practice for property boundary surveys. Bearing and distances of tracts were obtained from documents referenced above.
- The coordinate system used is NAD83 Louisiana State Plane South (US feet).
- Rights of Way, Easements, and Servitudes are shown hereon have not been verified in the field and any shown are for general locative information only.

Sheet Title:
Property Rights of Way Aerial Exhibit

Date: 6/7/2022

Project Number: 214094

Drawn By: WNT

Checked By:

Sheet: