

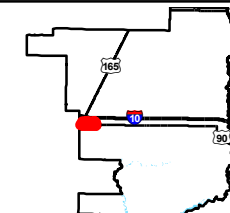
Exhibit L. T.O. Allen Industrial Park North
Electrical Transmission Infrastructure Map



T.O. Allen Industrial Park North Electrical Transmission Infrastructure Map

Existing Electric Transmission
Allen Estates North Site
Jefferson Davis Parish, LA

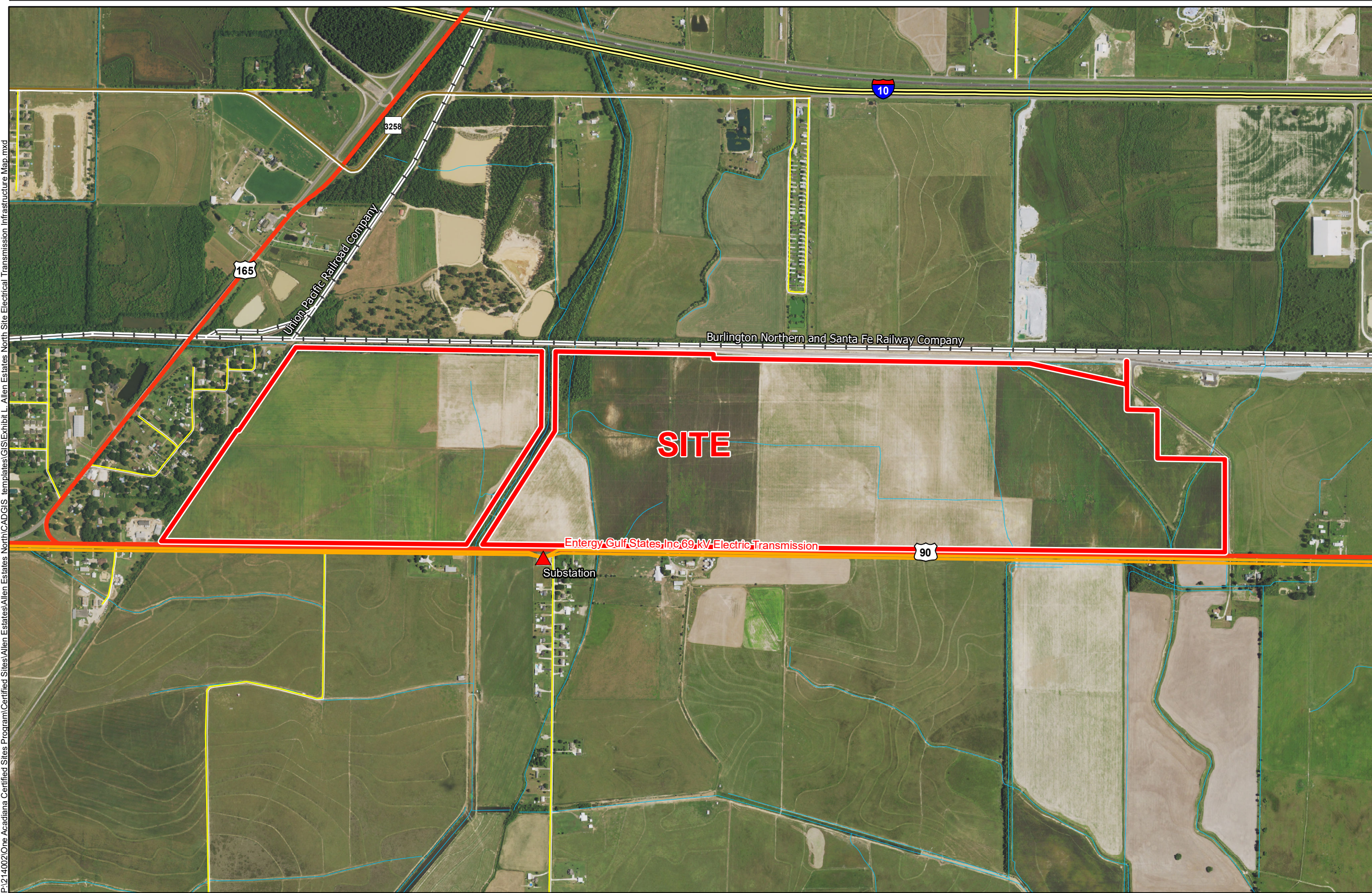
One Acadiana



Jefferson Davis Parish

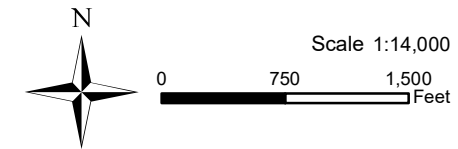
LEGEND

- Site Boundary (561.51 Ac. +/-)
- Electric Transmission**
- 69 kV (Entergy)
- ▲ Substation
- Existing Roadway**
- Interstate
- US Highway
- Rural State Highway
- Local Roads
- Railroad
- Stream



P:\214002\One Acadiana Certified Sites Program\Certified Sites\Allen Estates North\CAD\GIS templates\GIS\Exhibit L - Allen Estates North Site Electrical Transmission Infrastructure Map.mxd

- General Notes:**
1. No attempt has been made by CSRS, Inc. to verify site boundary, title, actual legal ownership, deed restrictions, servitudes, easements, or other burdens on the property, other than that furnished by the client or his representative.
 2. Transportation data from 2013 TIGER datasets via U.S. Census Bureau at ftp://ftp2.census.gov/geo/tiger/TIGER2013.
 3. Utility information from visual inspection and/or the individual utility operators. Exact field location has not been determined by survey. The lines shown are an approximate representation only and may have been offset for depiction purposes.
 4. 2015 aerial imagery from USDA-APFO National Agricultural Inventory Project (NAIP) and may not reflect current ground conditions.



Date:	1/16/2017
Project Number:	214002
Drawn By:	AMB
Checked By:	JAY

