

Welham Industrial Site - ±2,100 Acres - St James Parish

Topographic Map



Source:
-Aerial Photo: NAIP
-Base Map: ESRI, US Census, LDOT, LED
-Elevation Contours: USGS
-Locations and Boundries are approximated
GIS Analyst: MDT 12/14/2015
Additional Information Available Upon Request

Mapping conducted by:
Louisiana Economic Development
Business Intelligence
1051 N Third St
Baton Rouge, Louisiana 70802
(225) 342-3725
OpportunityLouisiana.com



0 1 Miles

- Potential Site
- Marathon Batture
- Elevation Contour Lines
- Railroad
- Interstate
- US Highway
- LA State Highway



Flood Zone Map



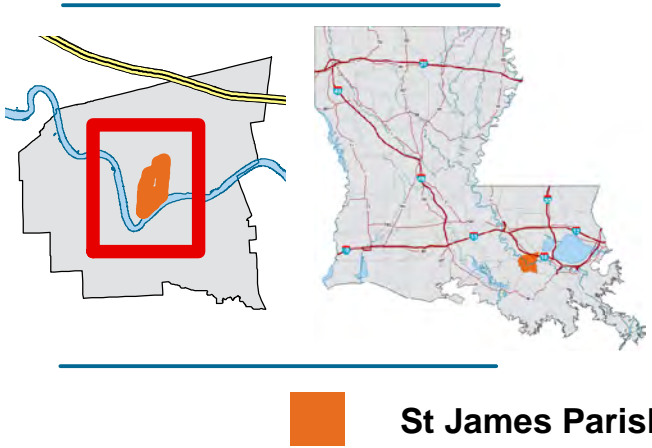
Source:
-Aerial Photo: NAIP
-Base Map: ESRI, US Census, LDOT, LED
-Flood Zone Data: FEMA
-Locations and Boundries are approximated
GIS Analyst: MDT 12/15/2015
Additional Information Available Upon Request

Mapping conducted by:
Louisiana Economic Development
Business Intelligence
1051 N Third St
Baton Rouge, Louisiana 70802
(225) 342-3725
OpportunityLouisiana.com



0 1 Miles

- | | |
|------------------|---|
| Potential Site | Flood Hazard Zones |
| Marathon Batture | Zone A - 1% Annual Chance Flood Hazard |
| Interstate | Regulatory Floodway |
| US Highway | Special Floodway |
| LA State Highway | Area of Undetermined Flood Hazard |
| Railroad | Zone X - 0.2% Annual Chance Flood Hazard |
| | Future Conditions 1% Annual Chance Flood Hazard |
| | Zone X - Area with Reduced Risk Due to Levee |

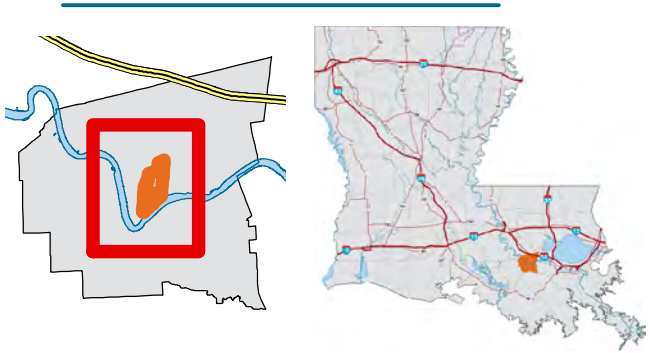


Potential Wetlands Map

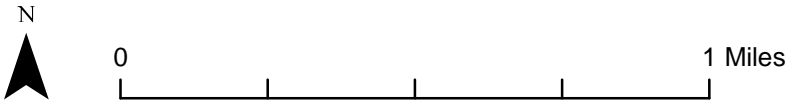


Source:
-Aerial Photo: NAIP
-Base Map: ESRI, US Census, LDOT, LED
-Wetlands Data: US Fish and Wildlife
-Locations and Boundaries are approximated
GIS Analyst: MDT 04/18/2017
Additional Information Available Upon Request

- | | |
|-------------------|-----------------------------------|
| Potential Site | Wetland Types |
| Marathon Batture | Estuarine and Marine Deepwater |
| River Mile Marker | Estuarine and Marine Wetland |
| Railroad | Freshwater Emergent Wetland |
| Interstate | Freshwater Forested/Shrub Wetland |
| US Highway | Freshwater Pond |
| LA State Highway | Lake |
| | Riverine |



Mapping conducted by:
Louisiana Economic Development
Business Intelligence
617 N Third St, 11th Floor
Baton Rouge, Louisiana 70802
(225) 342-3725
OpportunityLouisiana.com



St James Parish

Welham Industrial Site - ±2,100 Acres - St James Parish

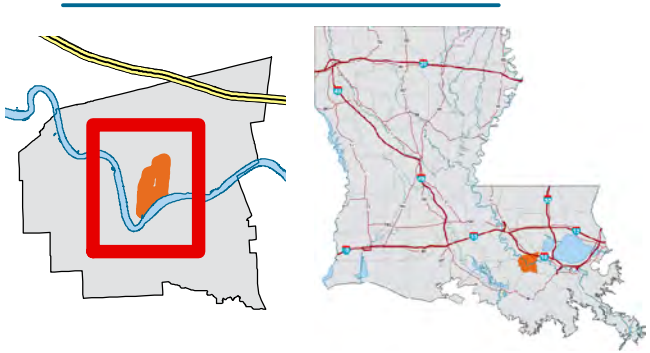
Known Encumbrances on Property



Source:
-Aerial Photo: NAIP
-Base Map: ESRI, US Census, LDOT, LED
NPMS, LDNR
-Locations and Boundaries are approximated
GIS Analyst: MDT 08/01/2017
Additional Information Available Upon Request

Mapping conducted by:
Louisiana Economic Development
Business Intelligence
617 N Third St, 11th Floor
Baton Rouge, Louisiana 70802
(225) 342-3725
OpportunityLouisiana.com

- Potential Site
- Marathon Batture
- 50' Rail ROW
- Welham Pipeline ROW
- Wellham Wells
- Plugged and Abandoned
- Railroad
- River Mile Marker
- Interstate
- US Highway
- LA State Highway



Welham Industrial Site - ±2,100 Acres - St James Parish

Selected Infrastructure Map



Source:
-Aerial Photo: NAIP
-Base Map: ESRI, US Census, LDOT, LED
-Pipeline Data: NPMS
-Locations and Boundaries are approximated
GIS Analyst: MDT 04/11/2017
Additional Information Available Upon Request

- Potential Site

Marathon Batture

Interstate

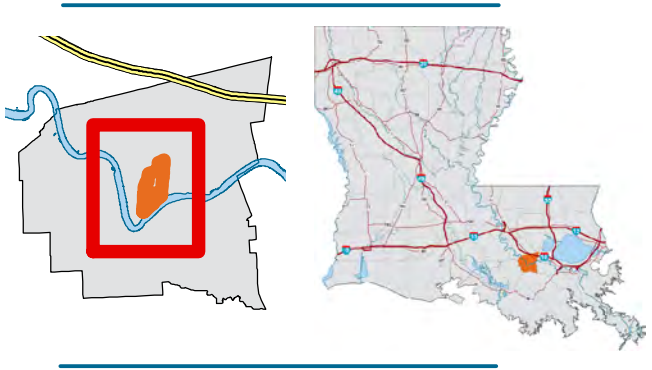
US Highway

LA State Highway

Railroad
- ALL OTHER PRODUCTS

ETHYLENE

NATURAL GAS



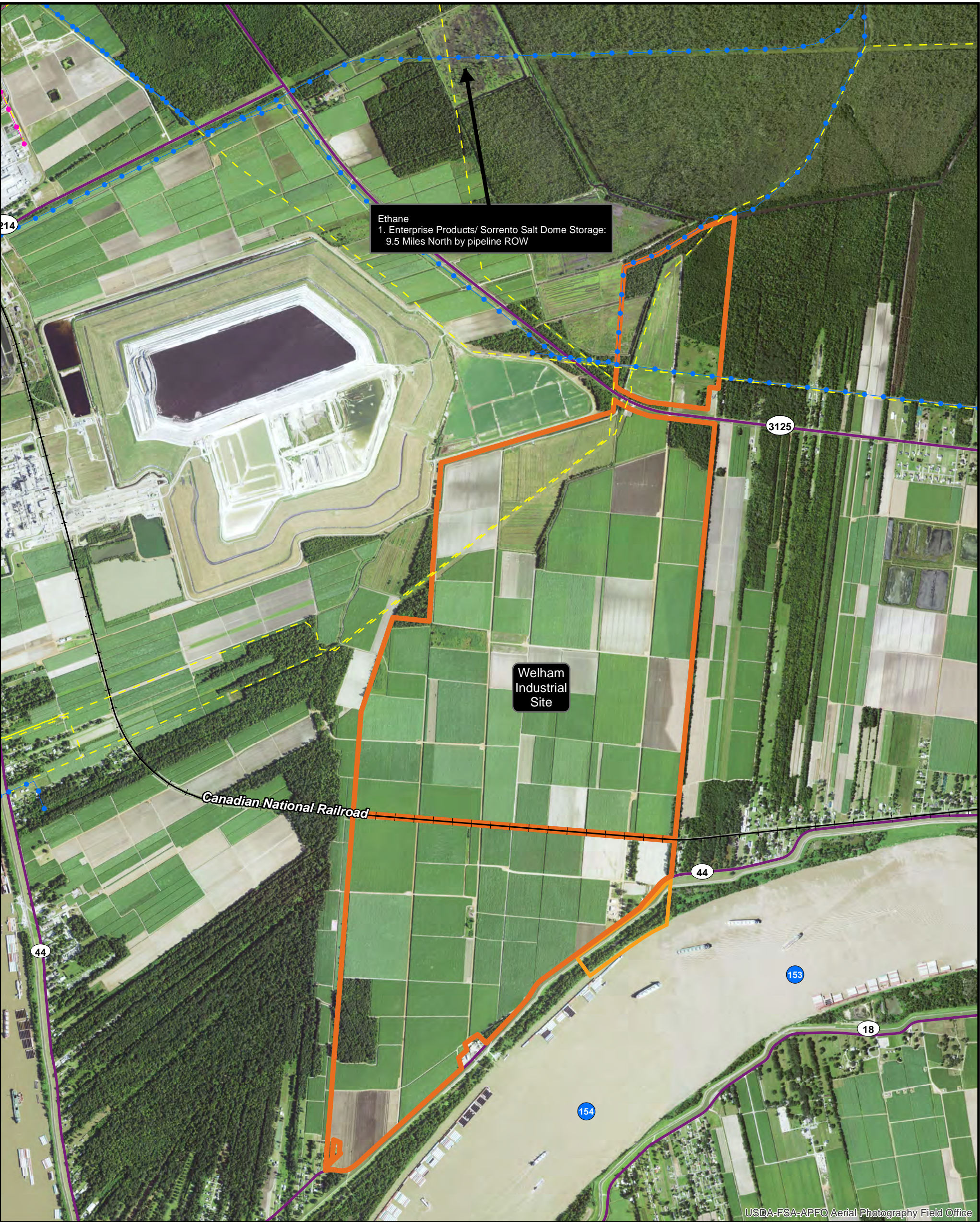
Mapping conducted by:
Louisiana Economic Development
Business Intelligence
1051 N Third St
Baton Rouge, Louisiana 70802
(225) 342-3725
OpportunityLouisiana.com



St James Parish

Welham Industrial Site - ±2,100 Acres - St James Parish

Selected Infrastructure



Source:
-Aerial Photo: NAIP
-Base Map: ESRI, US Census, LDOT, LED
NPMS, LDNR
-Locations and Boundaries are approximated
GIS Analyst: MDT 08/01/2017
Additional Information Available Upon Request

- Potential Site

Marathon Batture

ALL OTHER PRODUCTS

ETHANE

NATURAL GAS

NGL-MIXED

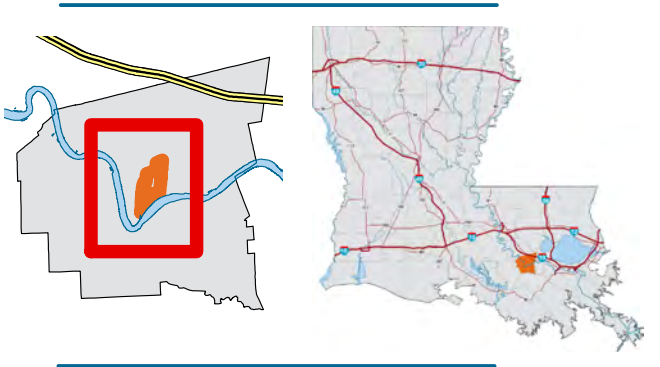
ETHYLENE
- Railroad

River Mile Marker

Interstate

US Highway

LA State Highway



Mapping conducted by:
Louisiana Economic Development
Business Intelligence
617 N Third St, 11th Floor
Baton Rouge, Louisiana 70802
(225) 342-3725
OpportunityLouisiana.com





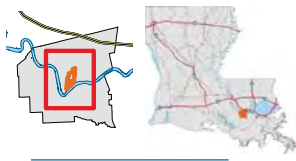
Source:
-Aerial Photo: NAIP
-Base Map: ESRI, US Census, LDOT, LED
-Parcel Data: St James Assessor
-Locations and Boundaries are approximated
GIS Analyst: MDT 02/25/2019
Additional Information Available Upon Request

Mapping conducted by:
Louisiana Economic Development
Business Intelligence
617 N Third St, 11th Floor
Baton Rouge, Louisiana 70802
(225) 342-3725
OpportunityLouisiana.com



0 0.5 Miles

- | | |
|-------------------|-----------------------------|
| Potential Site | PARCEL OWNER |
| Marathon Batture | ALL OTHER OWNERS |
| River Mile Marker | ACL TRANSPORTATION SERVICES |
| Railroad | GRAVOIS FARMS, L.L.C |
| Interstate | GRAVOIS FAMILY |
| US Highway | MOSAIC FERTILIZER |
| LA State Highway | MARATHON PETROLEUM CO. |



St James Parish