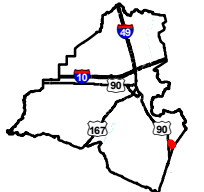


Exhibit W. Martial Farms Soils Conservation Service Map



Martial Farms Soils Conservation Service Map

Martial Farms
Lafayette Parish, LA



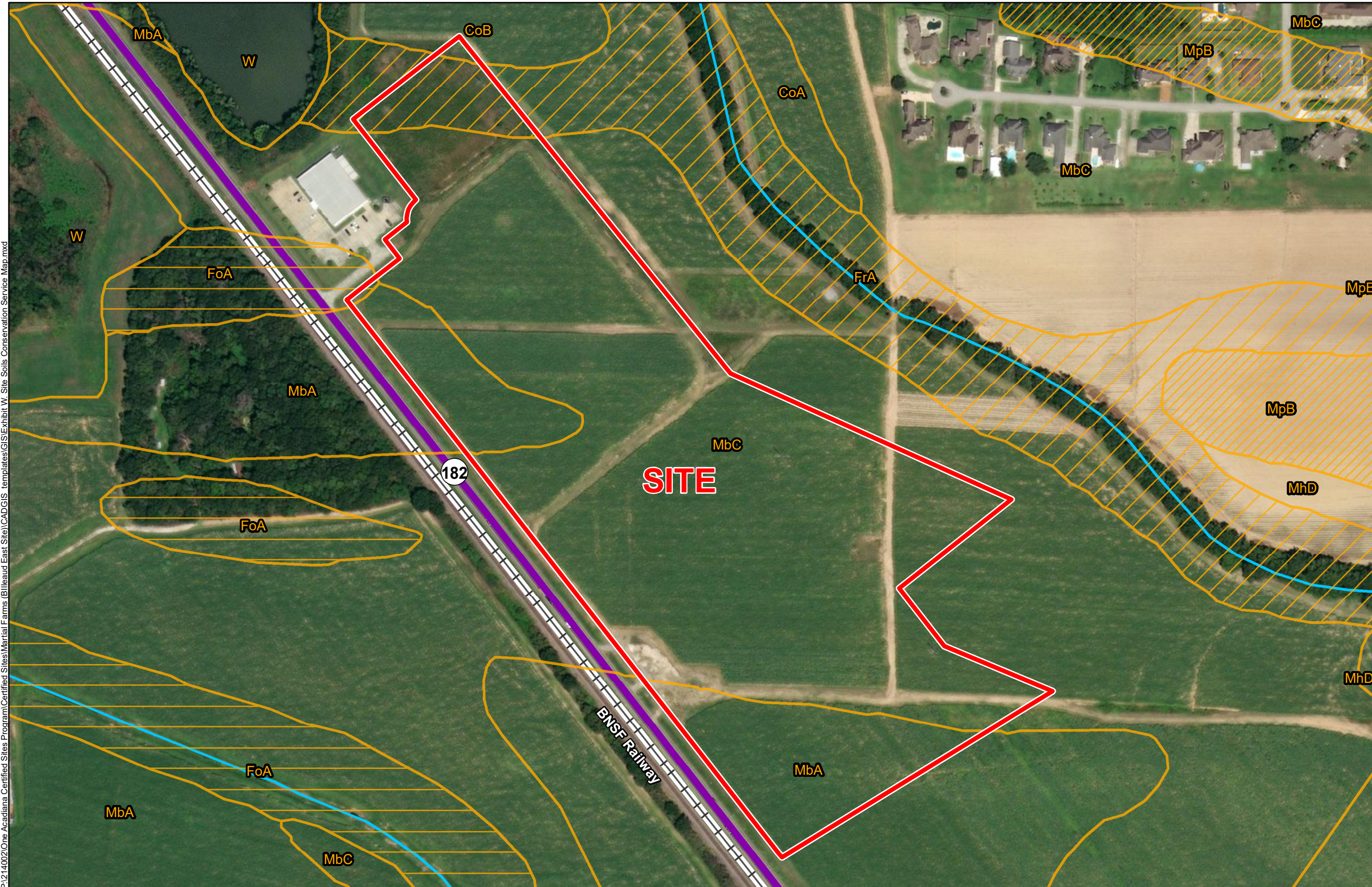
Lafayette Parish

LEGEND

- Site Boundary (32.55 Ac.±)
- Soil Type**
- CoA - Coteau silt loam, 0 to 1 percent slopes, (8% Hydric)
- CoB - Coteau silt loam, 1 to 3 percent slopes (0% hydric)
- FoA - Frost silt loam, 0 to 1 percent slopes, (90% Hydric)
- FrA - Frost silt loam, 0 to 1 percent slopes, occasionally flooded (90% hydric)
- MbA - Memphis silt loam, 0 to 1 percent slopes, (5% Hydric)
- MbC - Memphis silt loam, 1 to 5 percent slopes
- MhD - Memphis silt loam, 5 to 8 percent slopes (5% hydric)
- MpB - Memphis-Frost complex, gently undulating (35% hydric)
- W - Water
- Existing Roadway**
- Urban State Highway
- Railroad
- Stream



Date:	6/28/2021
Project Number:	214002
Drawn By:	SEW
Checked By:	EEB



- General Notes:
1. No attempt has been made by CSRS, Inc. to verify site boundary, title, actual legal ownership, deed restrictions, servitudes, easements, or other burdens on the property, other than that furnished by the client or his representative.
 2. Transportation data from 2013 TIGER datasets via U.S. Census Bureau at <ftp://ftp2.census.gov/geo/tiger/TIGER2013>.
 3. 2015 aerial imagery from USDA-APFO National Agricultural Inventory Project (NAIP) and may not reflect current ground conditions.
 4. Soils data from USDA SSURGO website: <http://websoilsurvey.sc.egov.usda.gov/App/WebSoilSurvey.aspx>.



Scale 1:3,000
0 150 300 Feet

P:\214002\One Acadiana Certified Sites Program\Certified Sites\Martial Farms (Billeaud East Site)\CADGIS templates\GIS\Exhibit W Site Soils Conservation Service Map.mxd