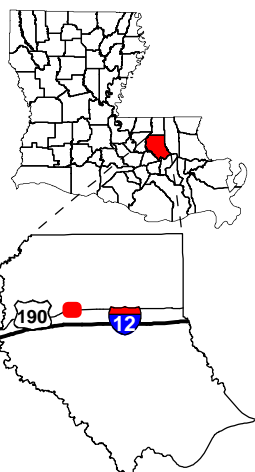


# Exhibit AA. Livingston Industrial Park FEMA 100 year Flood Plain Map

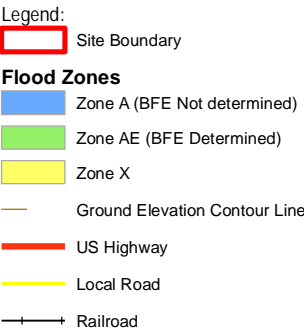
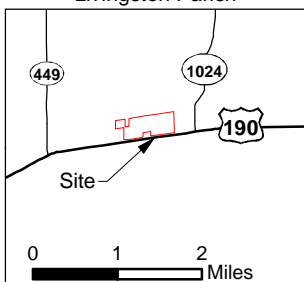
Project:  
Livingston Industrial Park  
Livingston Parish, LA

Client:

BRAC

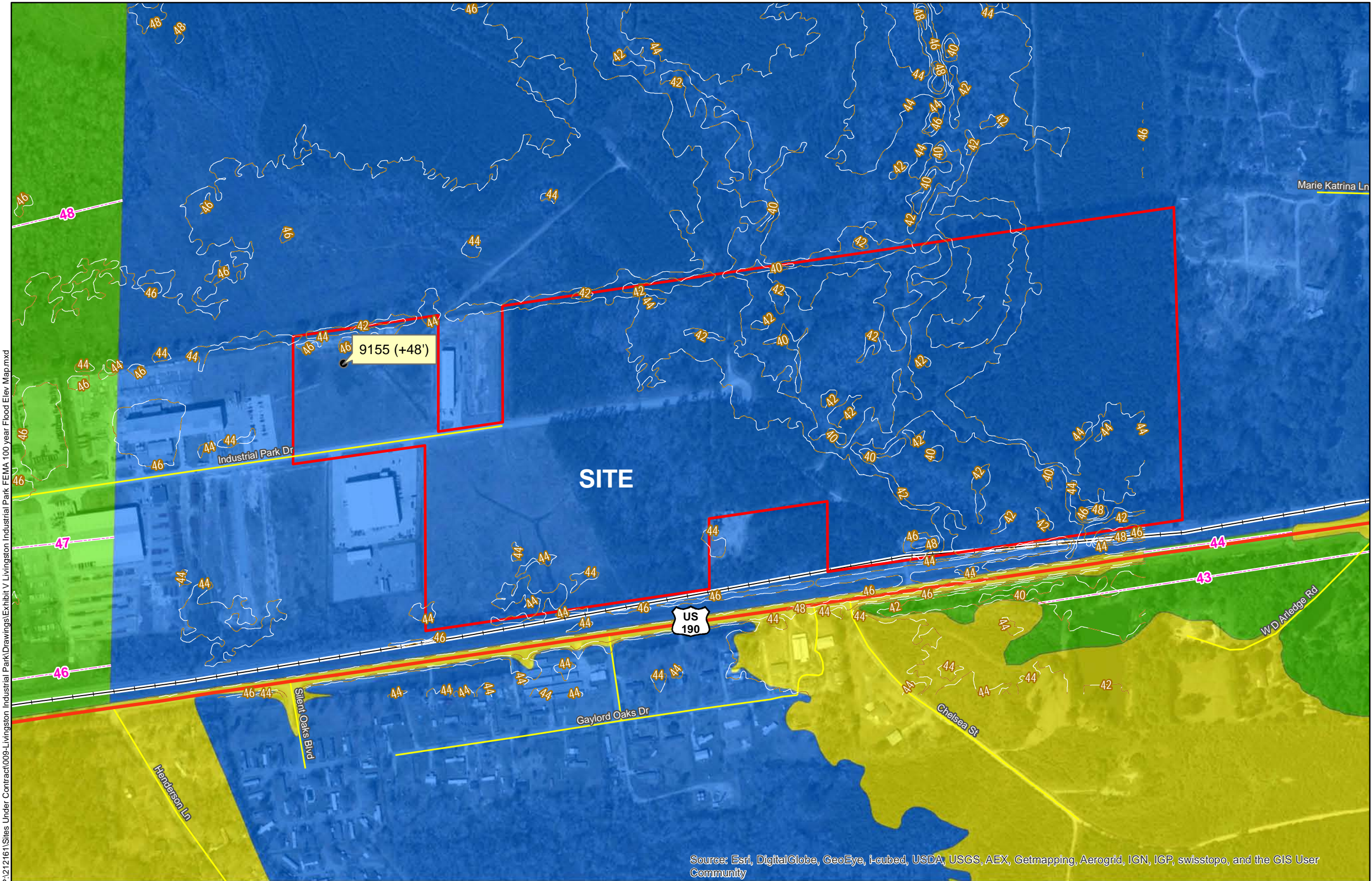


Livingston Parish



Source:  
GIS features acquired from public domain  
state and federal data sources (LDOTD,  
GNIS, LOSCO, US Census Bureau).

Date: 12/10/2013  
Project Number: 212161.20.009  
Drawn By: MMS  
Checked By: TMG



## General Notes:

- No attempt has been made by CSRS, Inc. to verify title, actual legal ownership, deed restrictions, servitudes, easements, or other burdens on the property, other than that furnished by the client or his representative.
- Transportation data obtained from Louisiana GIS Digital Map May 2007 Compilation DVD set.
- Flood data created by FEMA and ordered from FEMA MSC. FIRM Panels 22063C0140E and 22063C0145E for the site were effective 4/3/2012.
- USACE BFE determination received 11/26/2013, established as 48'. See Exhibit for details.
- Elevation contours downloaded from LSU Atlas website [http://data1.atlas.lsu.edu/lidarcontour\\_as\\_shp](http://data1.atlas.lsu.edu/lidarcontour_as_shp).

