

# Exhibit T. Carville Riverfront Development Soils Conservation Service Map

Project:  
Site Exhibit for  
723 Ac +/- Site in St. Gabriel  
Iberville Parish, LA

Client:  
**BRAC**

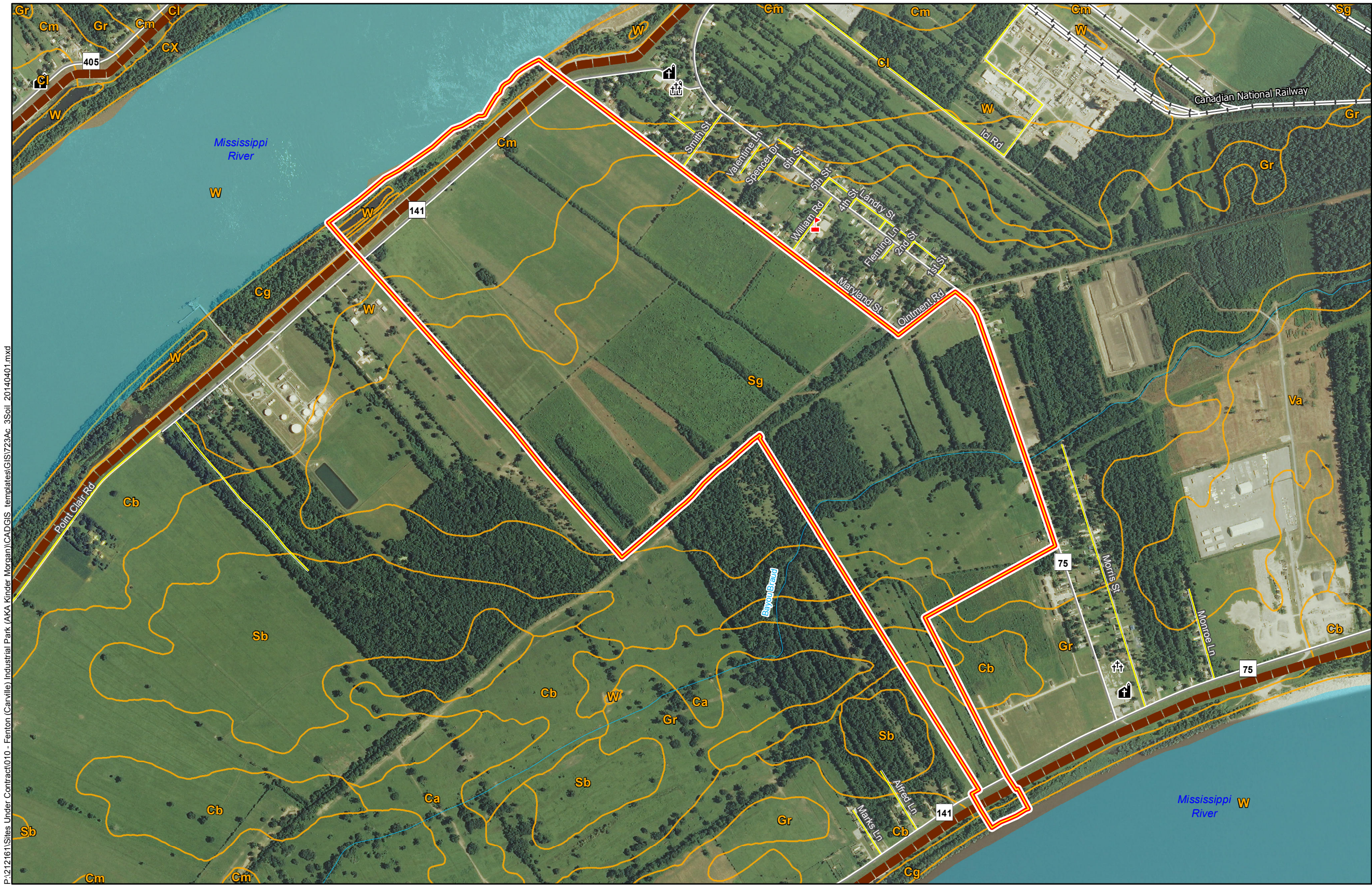


Iberville Parish

SOILS MAP

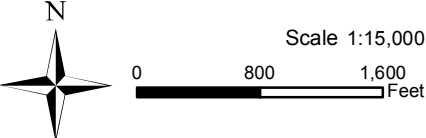
## Legend

- Site Boundary
- Soil Type
  - See Soil Report for Definitions
- Civic Feature
  - School
  - Cemetery
  - Church
- Existing Roadway
  - Rural State Highway
  - Local Roads
  - Railroad
  - Levee
  - Stream
  - Waterbody



P:\212161\Sites Under Contract\010 - Fenton (Carville) Industrial Park (AKA Kinder Morgan)\CAD\GIS templates\GIS\723Ac\_3Soil\_20140401.mxd

General Notes:  
1. No attempt has been made by CSRS, Inc. to verify site boundary, title, actual legal ownership, deed restrictions, servitudes, easements, or other burdens on the property, other than that furnished by the client or his representative.  
2. Transportation data from 2013 TIGER datasets via U.S. Census Bureau at <http://ftp2.census.gov/geo/tiger/TIGER2013>.  
3. Soils data from USDA SSURGO website: <http://websoilsurvey.sc.egov.usda.gov/App/WebSoilSurvey.aspx>.  
4. 2013 aerial imagery from USDA-APFO National Agricultural Inventory Project (NAIP) and may not reflect current ground conditions.



Date: 4/14/2014  
Project Number: 212161.010  
Drawn By: MMS  
Checked By: TMG

**CSRS**  
IMAGINE SHAPE DELIVER  
6767 Perkins Road Suite 200 Baton Rouge, LA 70808  
Telephone: 225 769-0546 Fax: 225 767-0060  
[www.csrsonline.com](http://www.csrsonline.com)