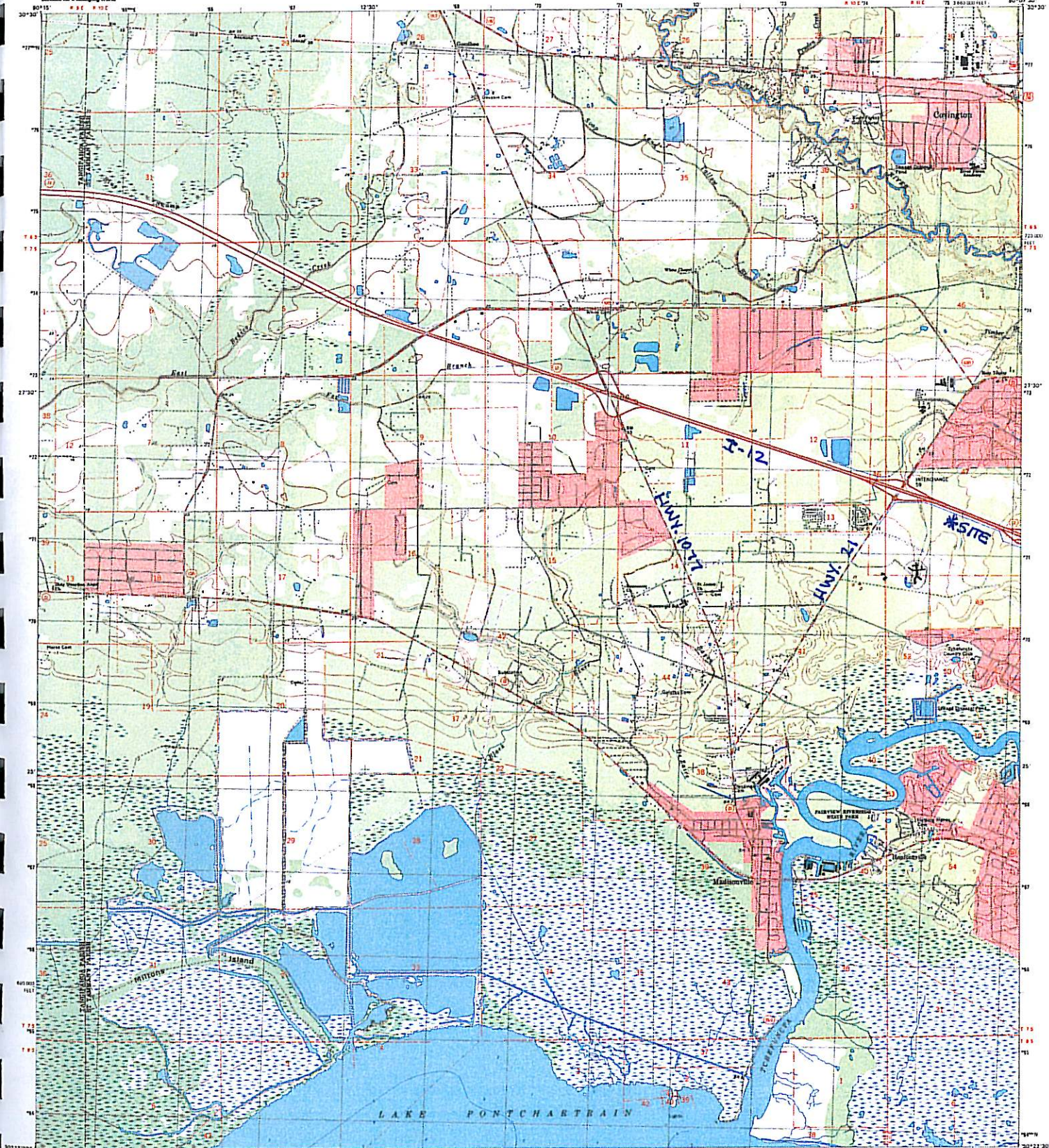




U.S. DEPARTMENT OF THE INTERIOR  
U.S. GEOLOGICAL SURVEY

MADISONVILLE QUADRANGLE  
LOUISIANA  
7.5-MINUTE SERIES (TOPOGRAPHIC)



Produced by the United States Geological Survey  
Topography compiled 1962. Planimetry derived from imagery  
acquired 1958 and other sources. Public Land Survey System (PLSS)  
survey control corners as of 1968. Boundaries shown as of 1968.  
Selected hydrographic data compiled from USCGC Chart 1209 (1967).  
This information is not intended for navigational purposes.  
North American Datum of 1983 (NAD 83). Projection and  
800-meter grid. Universal Transverse Mercator, zone 13  
18 500 East (also Louisiana Coordinate System of 1983 (LCS 83)).  
North American Datum of 1927 (NAD 27) is shown by dashed  
corner ticks. The relation of the tick between NAD 83 and  
NAD 27 for 7.5-minute quadrangles are obtainable from  
National Geographic Society (NGS) CD-ROMs.  
This quadrangle covers a subsidence area.  
There may be private subsidence within the boundaries of the  
National or State reservations shown on this map.  
Landmark buildings visible 1968.



CONTOUR INTERVALS 8 FEET  
NATIONAL GEODESIC TRIANGULAR DATUM OF 1983  
TO CORRECT FROM 1927 TO 1983, MULTIPLY BY 0.9998  
DEPTH MEASUREMENTS IN FEET. DATUM IS NEARLY LEVEL LOW WATER.  
THE RELATIONSHIP BETWEEN THIS DATUM IS VARIABLE.  
THE MEANING OF THIS IS APPROXIMATELY 1:50,000.  
THIS MAP COMPLETES WITH NATIONAL MAP ACCURACY STANDARDS  
FOR SALE BY U.S. GEOLOGICAL SURVEY, P. O. BOX 25184, DENVER, COLORADO 80225  
AND LOUISIANA DEPARTMENT OF TRANSPORTATION AND DEVELOPMENT, BAYOU BRIDGE, LOUISIANA 70084  
A USGS RELEASED PHOTOGRAPHIC MAP AND SYMBOLS IS AVAILABLE ON REQUEST

ROAD CLASSIFICATION

- Primary Highway
- Light-duty road, hard or  
improved surface
- Secondary Highway
- Unimproved road
- Unimproved Road
- U.S. Route
- State Route

QUADRANGLE LOCATION

MADISONVILLE, LA  
1998  
DOMA 19411 HW SERIES 1024