



Exhibit O.

Loul's Landing

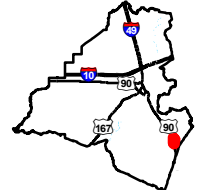
Electrical Transmission Infrastructure Map



Loul's Landing Electrical Transmission Infrastructure Map

Loul's Landing
Lafayette Parish, LA

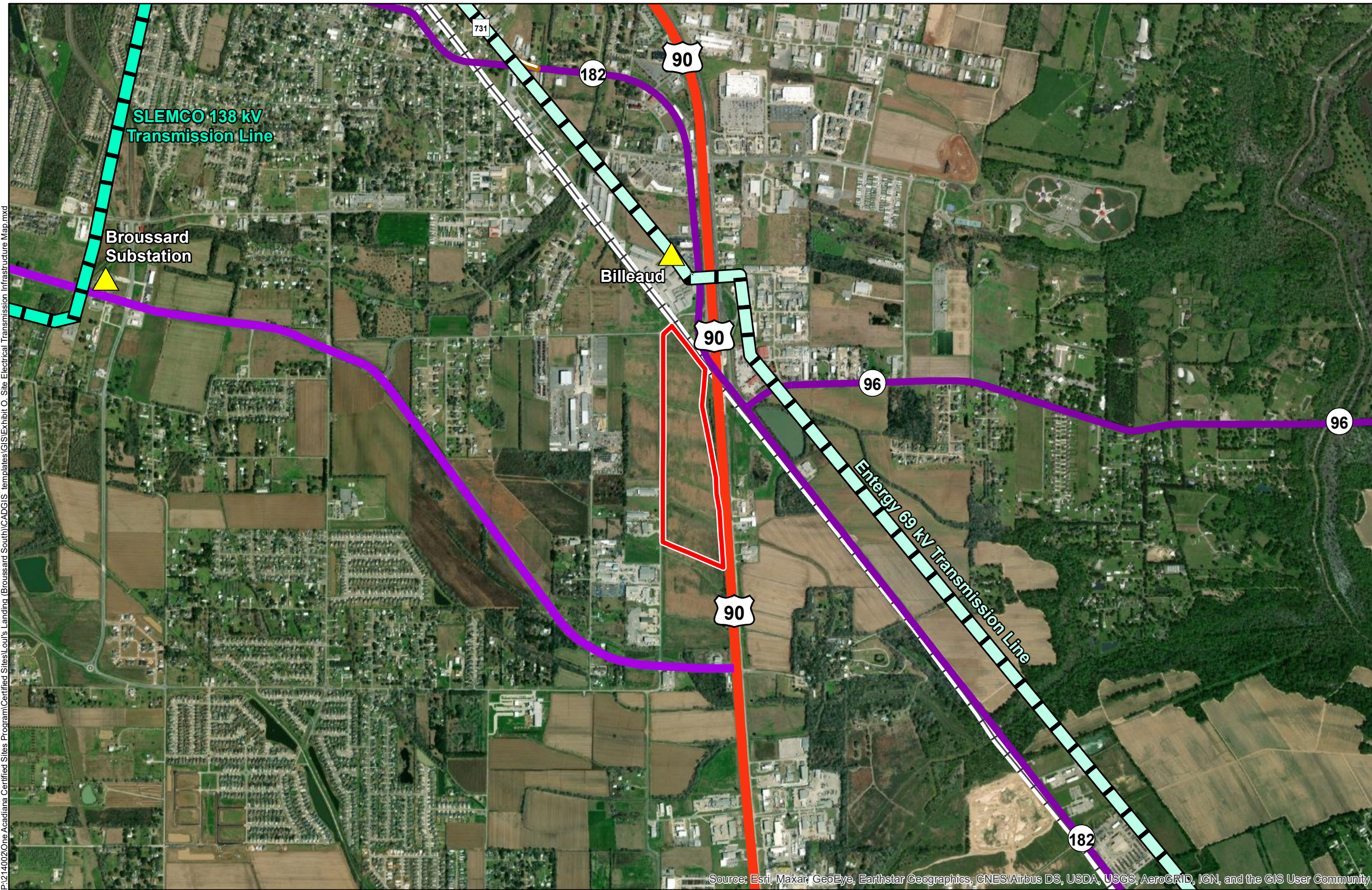
One Acadiana



Lafayette Parish

LEGEND

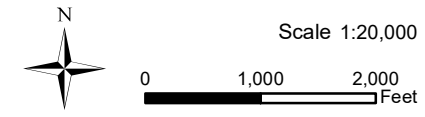
- Site Boundary (64.80 Ac. ±)
- LA Substations
- SLEMCO 138 kV Transmission Lines
- Existing Roadway**
- US Highway
- 4-Lane State Highway
- Urban State Highway
- Rural State Highway
- Railroad
- Electric Transmission Lines**
- Electric Transmission Line (In Service)



P:\214002\One Acadiana Certified Sites Program\Certified Sites\Loul's Landing (Broussard South)\CADGIS templates\GIS\Exhibit O_Site Electrical Transmission Infrastructure Map.mxd

Source: Esri, Maxar, GeoEye, Earthstar Geographics, CNES/Airbus DS, USDA, USGS, AeroGRID, IGN, and the GIS User Community

- General Notes:
1. No attempt has been made by CSRS, Inc. to verify site boundary, title, actual legal ownership, deed restrictions, servitudes, easements, or other burdens on the property, other than that furnished by the client or his representative.
 2. Transportation data from 2013 TIGER datasets via U.S. Census Bureau at <ftp://ftp2.census.gov/geo/tiger/TIGER2013>.
 3. Utility information from visual inspection and/or the individual utility operators. Exact field location has not been determined by survey. The lines shown are an approximate representation only and may have been offset for depiction purposes.
 4. 2015 aerial imagery from USDA-APFO National Agricultural Inventory Project (NAIP) and may not reflect current ground conditions.



Date:	6/23/2022
Project Number:	214002
Drawn By:	SEW
Checked By:	EEB

