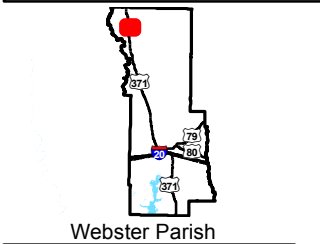
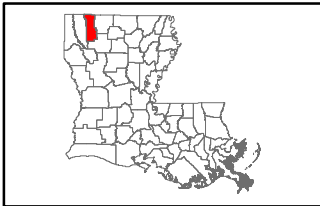


Exhibit J. North Webster Parish Industrial District Site Electrical Distribution Infrastructure Map

Existing Electric Distribution
NWPID Site
Webster Parish, LA

NWPID



Legend

Site Boundary
(61.33 Acres +/-)

Existing Electric

Single Phase

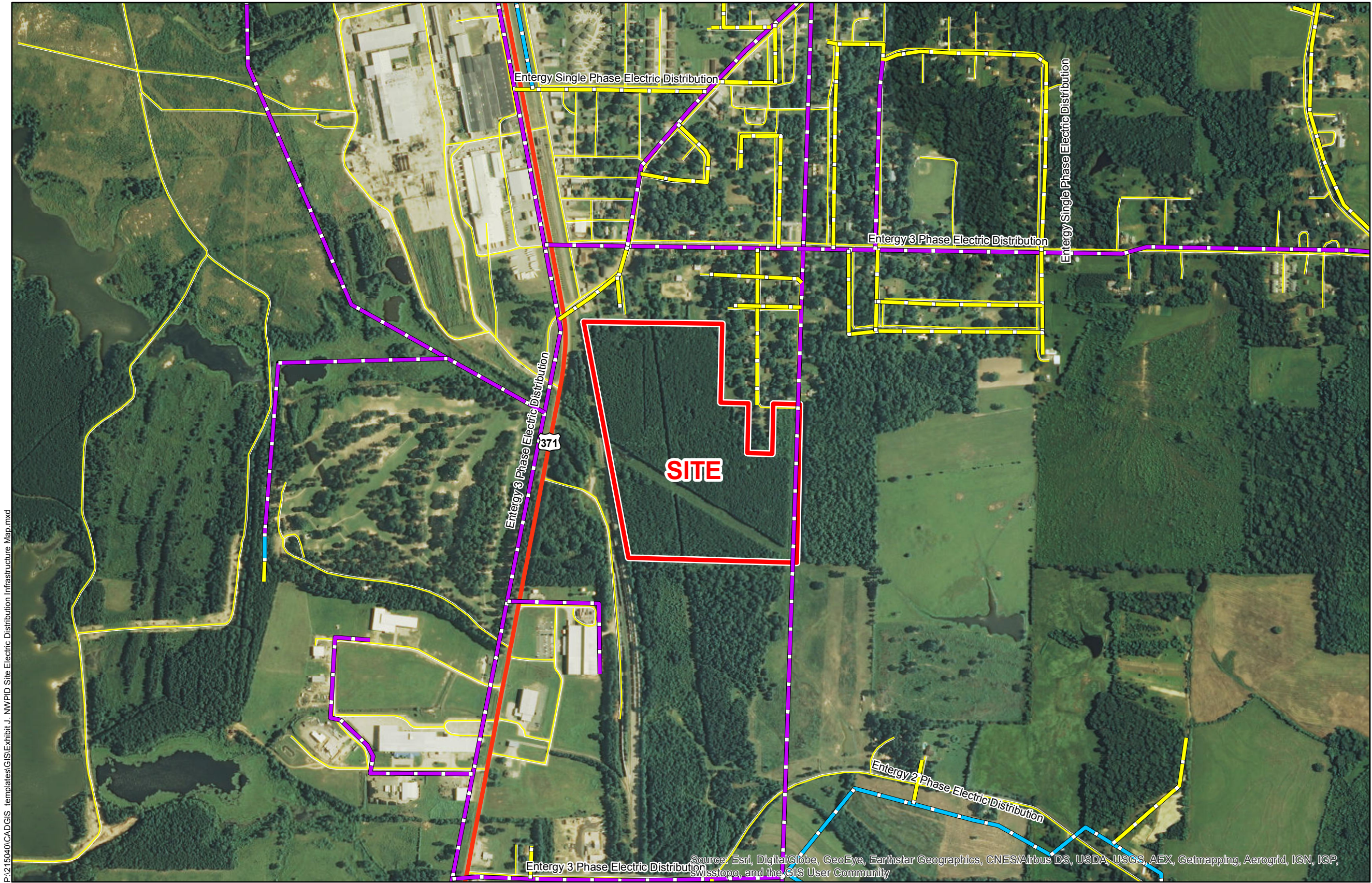
2 Phase

3 Phase

Existing Roadway

US Highway

Local Roads



P:\215040\CAD\GIS templates\GIS\Exhibit J. NWPID Site Electric Distribution Infrastructure Map.mxd

General Notes:
1. No attempt has been made by CSRS, Inc. to verify site boundary, title, actual legal ownership, deed restrictions, servitudes, easements, or other burdens on the property, other than that furnished by the client or his representative.
2. Transportation data from 2013 TIGER datasets via U.S. Census Bureau at ftp2.census.gov/geo/tiger/TIGER2013.
3. Utility information from visual inspection and/or the individual utility operators. Exact field location has not been determined by survey. The lines shown are an approximate representation only and may have been offset for depiction purposes.



Scale 1:10,000
0 540 1,080 Feet



NORTH WEBSTER PARISH
INDUSTRIAL DISTRICT

Date:	10/6/2015
Project Number:	215040
Drawn By:	AMB
Checked By:	JAY

CSRS
IMAGINE SHAPE DELIVER
6767 Perkins Road Suite 200 Baton Rouge, LA 70808
Telephone: 225 769-0546 Fax: 225 767-0060
www.csrsonline.com