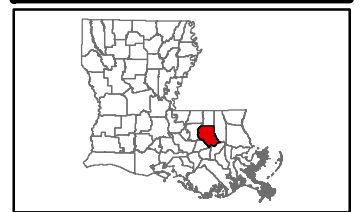


Exhibit BB. Colyell Business Park All Utilities Infrastructure Site Map

Colyell Business Park All Utilities Infrastructure Site Map

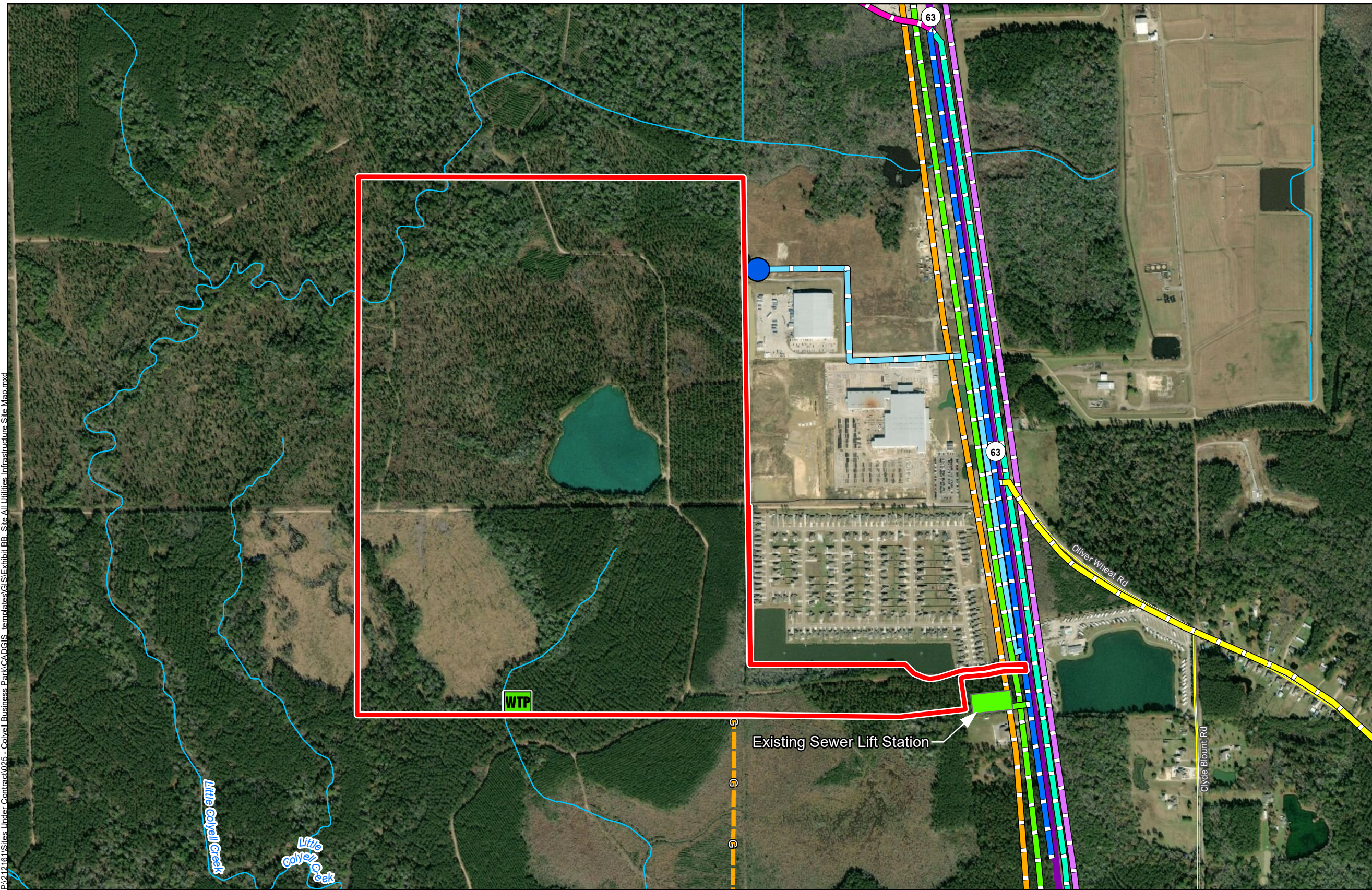
Colyell Business Park
Livingston Parish, LA

BRAC



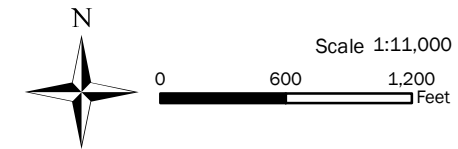
LEGEND

- Site Boundary
- Elevated water tank
- Existing 6-inch Water Line
- Existing 12-inch Water Line
- Existing 6-inch Town of Livingston Sewer Force Main
- WTP Proposed 90,000 GPD Wastewater Treatment Plant
- Proposed 8-inch Natural Gas Line
- Existing Town of Livingston 2-inch Natural Gas Line
- Single Phase Electrical
- Two Phase Electrical
- Three Phase Electrical
- AT&T Telecommunication Line
- Existing Roadway**
- Urban State Highway
- Local Roads
- Stream



P:\212161\Sites Under Contract\025 - Colyell Business Park\CAD\GIS Templates\GIS\Exhibit BB - Site All Utilities Infrastructure Site Map.mxd

General Notes:
 1. No attempt has been made by CSRS, Inc. to verify site boundary, title, actual legal ownership, deed restrictions, servitudes, easements, or other burdens on the property, other than that furnished by the client or his representative.
 2. Transportation data from 2013 TIGER datasets via U.S. Census Bureau at [ftp://ftp2.census.gov/geo/tiger/TIGER2013](http://ftp2.census.gov/geo/tiger/TIGER2013).
 3. Utility information from visual inspection and/or the individual utility operators. Exact field location has not been determined by survey. The lines shown are an approximate representation only and may have been offset for depiction purposes.
 4. 2015 aerial imagery from USDA-APFO National Agricultural Inventory Project (NAIP) and may not reflect current ground conditions.



LED LOUISIANA ECONOMIC DEVELOPMENT
Date: 12/3/2019
Project Number: 213151
Drawn By: EEB
Checked By: TMG

