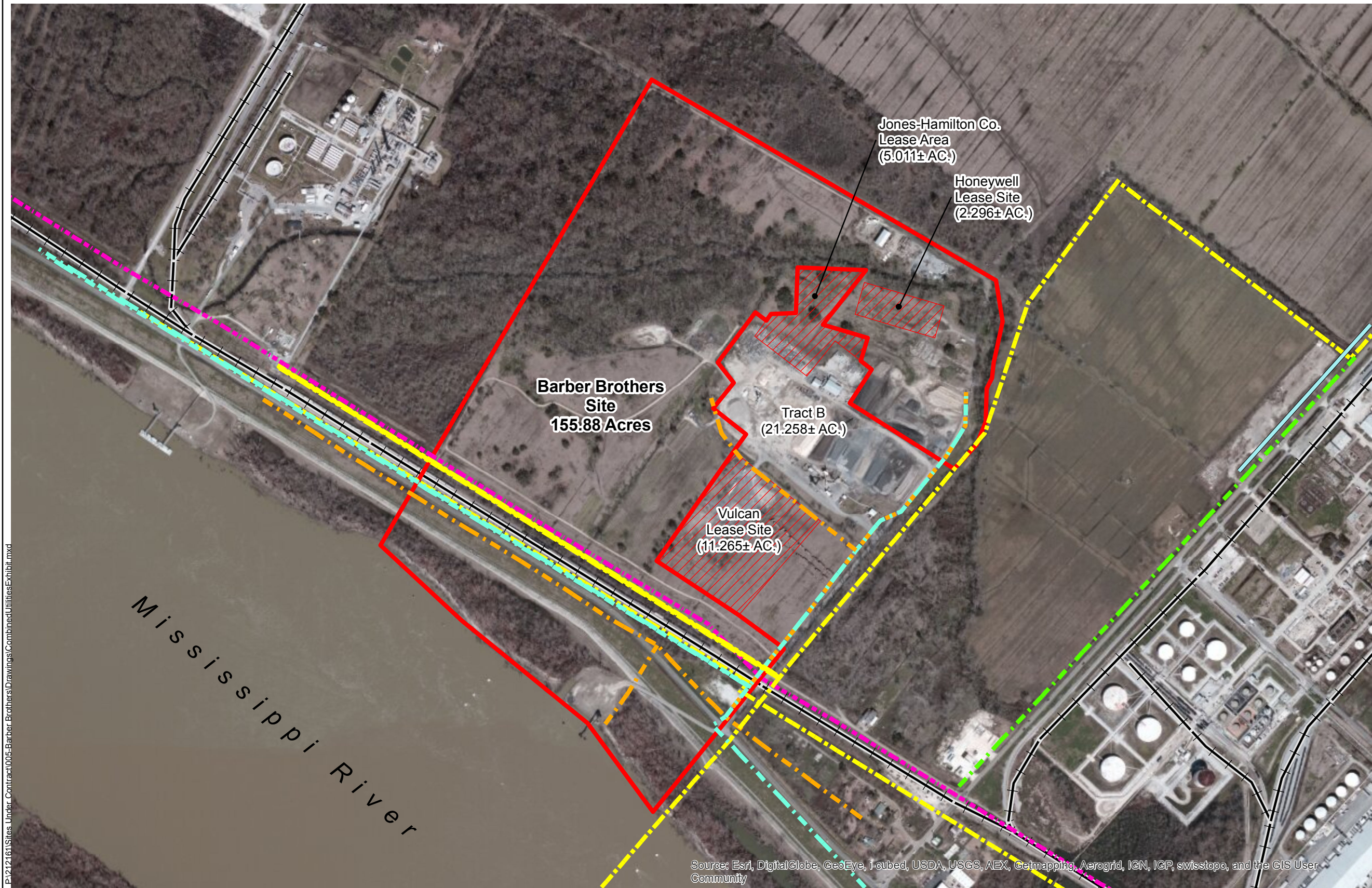


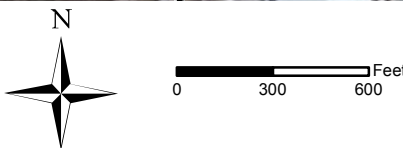
Exhibit FF. Waterloo Site All Utilities Infrastructure Site Map



P:\212161\Sites Under Contract\005-Barber Brothers\Drawings\CombinedUtilitiesExhibit.mxd

Utility Notes:
1. Utility location information provided by visual inspection of the site
2. Utility line is located on the north side of LA 75 approximately 50-75' from the centerline of the road.
3. Exact field location has not been determined. The lines shown are an approximate representation only.

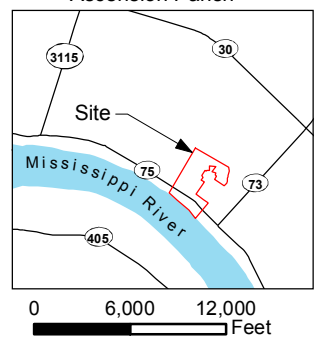
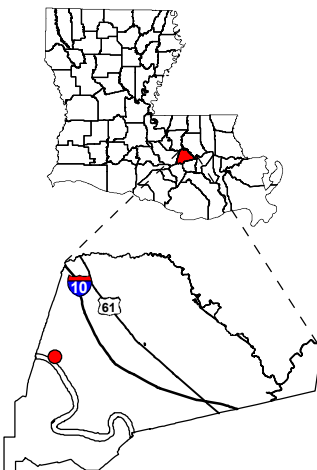
Source: Esri, DigitalGlobe, GeoEye, I-cubed, USDA, USGS, AEX, Getmapping, Aerogrid, IGN, IGP, swisstopo, and the GIS User Community



Project:
**Site Exhibit for
Barber Brothers
Ascension Parish, LA**

Client:

BRAC



- Legend**
- Electric Distribution
 - Electric Transmission
 - Natural Gas Distribution
 - Natural Gas Transmission
 - Telecommunicati...
 - Drinking Water Main
 - Site Boundary (155.88± Ac.)
 - Existing Lease Sites



Source:
GIS features acquired from public domain state and federal data sources (LDOTD, GNIS, LOSCO, US Census Bureau).

Date: 9/3/2013
Project Number: 212161.20.006
Drawn By: JES
Checked By: TMG

CSRS
IMAGINE SHAPE DELIVER
6767 Perkins Road Suite 200 Baton Rouge, LA 70808
Telephone: 225 769-0546 Fax: 225 767-0060
www.csrsnline.com