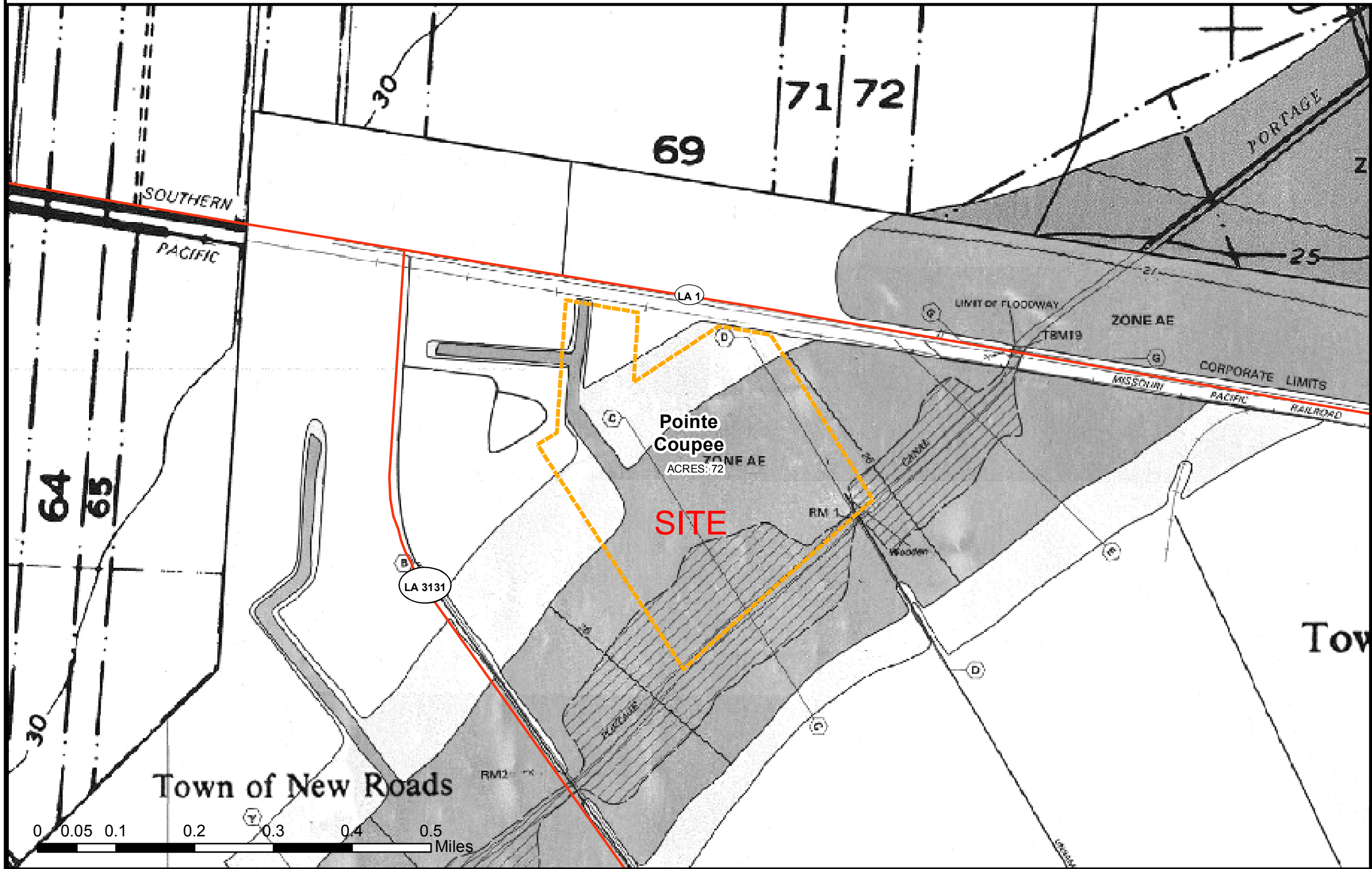


# Exhibit V. New Roads Industrial Park FEMA 100 year Flood Plain Map



- Legend
- Poydras Site
  - School
  - Church
  - Cemetery
  - Truck Route
  - Parish Boundary

CONFIDENTIAL

Source  
Parcel data supplied by Pointe Coupee Assessor.  
Parcel acreage values approximated.  
GIS features acquired from public domain state and federal data sources (GNIS, LOSCO, US Census Bureau).  
Flood Data: FEMA Effective Flood Maps 1995  
Imagery: 2010 USDA NAIP

Title  
**POINTE COUPEE PARISH  
NEW ROADS  
INDUSTRIAL PARK**

Project

GIS Analyst	WBM	Date	9/13/12
LEO Project No.	12-003	Map No.	001

LEO, LLC  
17170 Perkins Road  
Baton Rouge, Louisiana 70810  
(225) 281-4202



SITE PROFILE: New Roads Industrial Park  
Acres: 72