

## Exhibit R. Noel Site Roadway Transportation Infrastructure Wide Map

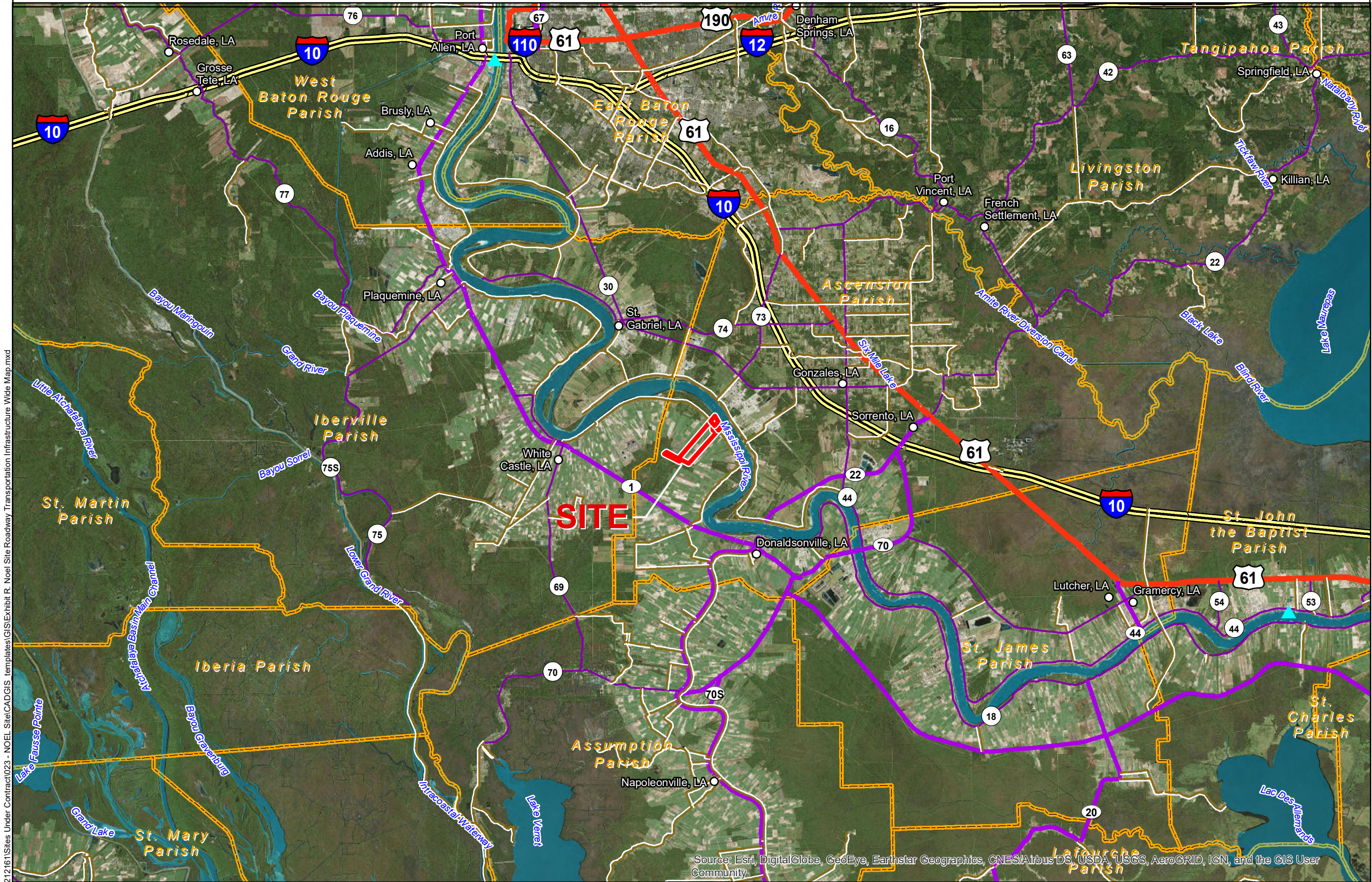


Baton Rouge Area Chamber®





# Noel Roadway Transportation Infrastructure Wide Map

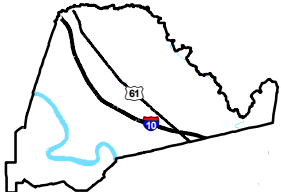


P:\212161\Sites Under Contract\023 - Noel Site\CAD\GIS templates\GIS\Exhibit R. Noel Site Roadway Transportation Infrastructure Wide Map.mxd

Source: Esri, DigitalGlobe, GeoEye, Earthstar Geographics, CNES/Airbus DS, USDA, USGS, AeroGRID, IGN, and the GIS User Community

Noel  
Ascension Parish, LA

BRAC



Ascension Parish

## LEGEND

- Site Boundary
- Deep Draft Port
- Cities
- Parish Boundary
- Waterbody
- Existing Roadway
  - Interstate
  - US Highway
  - 4-Lane State Highway
  - Urban State Highway
  - Rural State Highway



Date:	5/20/2019
Project Number:	212161
Drawn By:	DWC
Checked By:	EEB

**CSRS**  
IMAGINE SHAPE DELIVER

6767 Perkins Road Suite 200 Baton Rouge, LA 70808  
Telephone: 225 769-0546 Fax: 225 767-0060  
www.csrsonline.com

- General Notes:
- No attempt has been made by CSRS, Inc. to verify site boundary, title, actual legal ownership, deed restrictions, servitudes, easements, or other burdens on the property, other than that furnished by the client or his representative.
  - Transportation data from 2013 TIGER datasets via U.S. Census Bureau at [ftp2.census.gov/geo/tiger/TIGER2013](http://ftp2.census.gov/geo/tiger/TIGER2013).
  - 2015 aerial imagery from ESRI Online Basemaps and may not reflect current ground conditions.



Scale 1:300,000  
0 16,000 32,000 Feet