

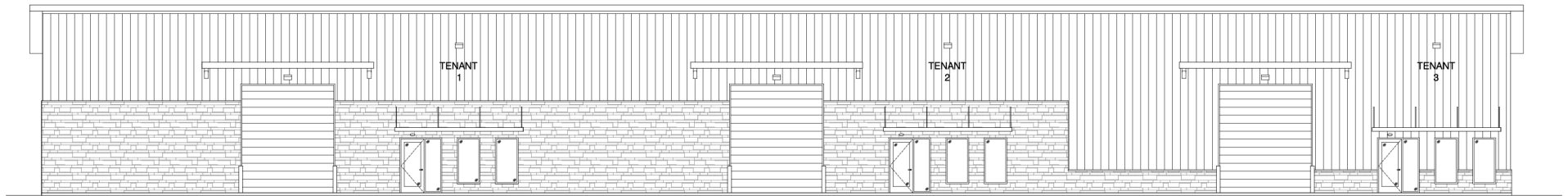
±3,700 – 23,200 SF
INDUSTRIAL FOR LEASE



34532 HIGHWAY 30
GEISMAR, LA 70734

GEISMAR STORAGE





PROPERTY OVERVIEW

Property Highlights

- Phase 1 will include Two $\pm 11,600$ SF Warehouses with Flexible Office Configurations
- Divisible to Offer $\pm 3,700$ SF Suites, Each Complete with One Grade-Level Door, Several Offices, 5-6 Parking Spaces and Access to Communal Dock-High Loading
- Clear Height Ranges from 19' in Rear to 24' at Front
- 14' Grade-Level Doors
- Future Phases will Include $\pm 46,000$ SF Between Four Buildings
- 3-Phase Power

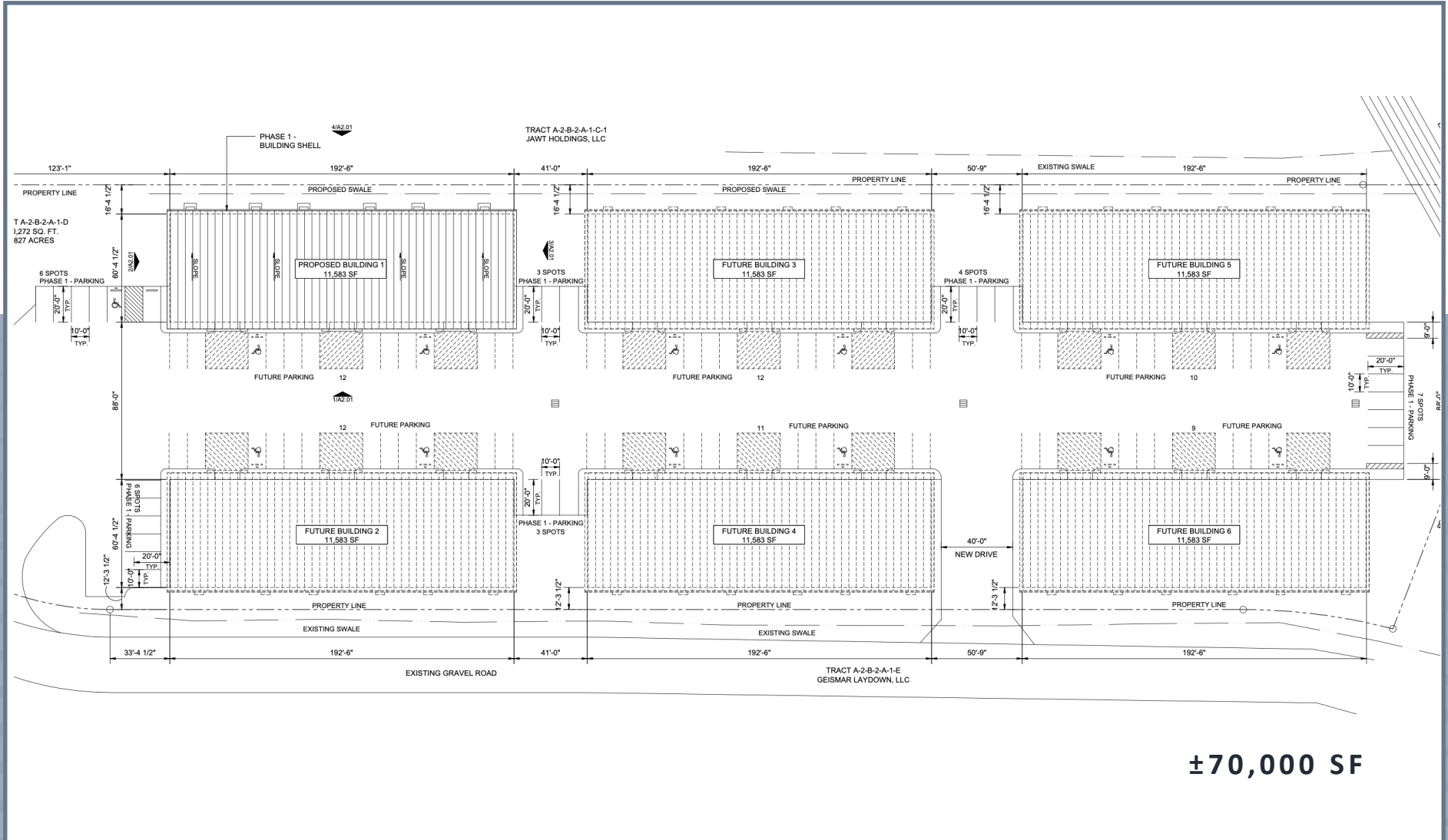
AVAIL SPACE (SF): $\pm 3,700 - 23,200$

LEASE RATE: **\$12.95 PSF**

STRUCTURE: **NNN**

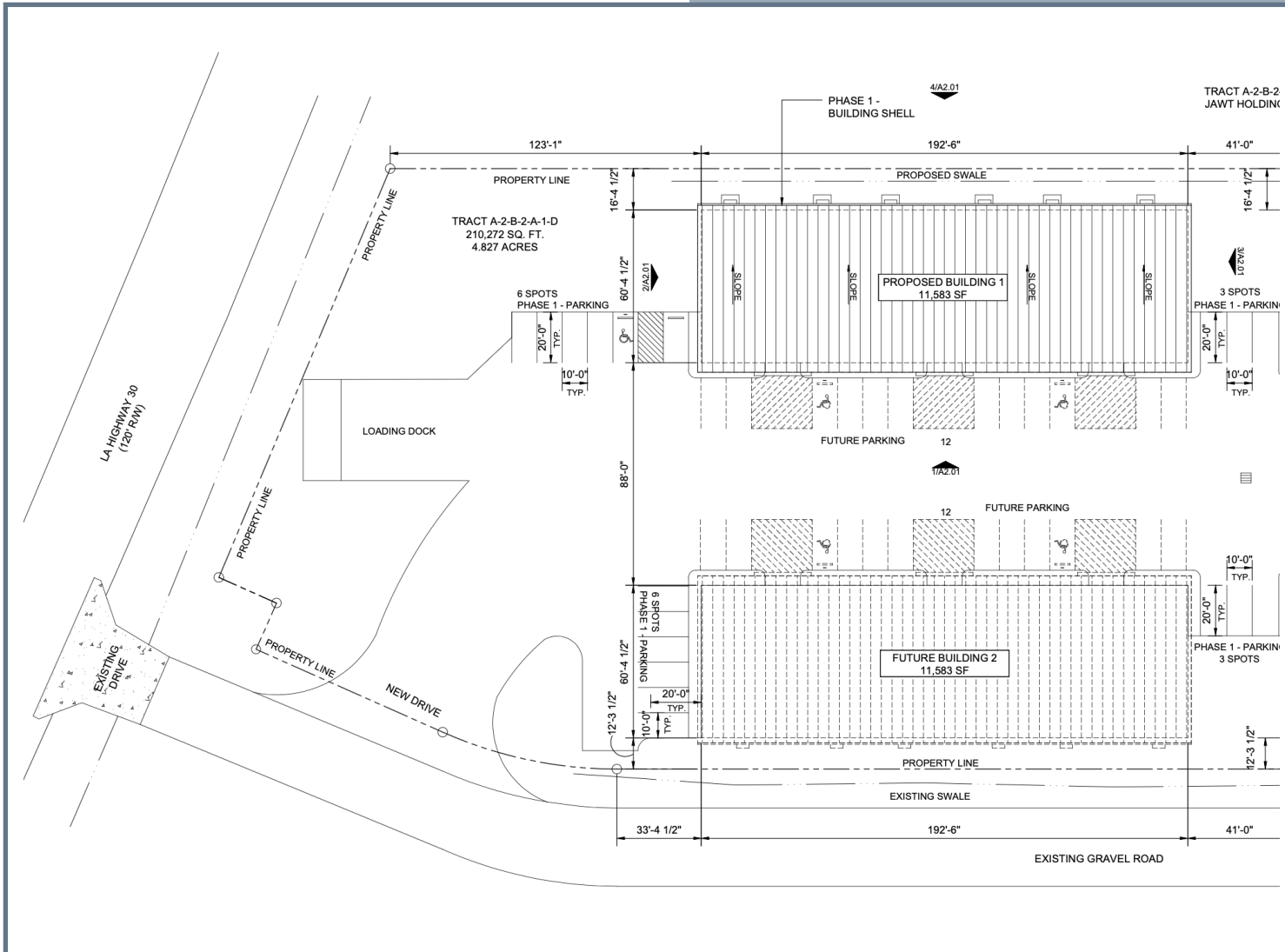
EST DELIVERY: **Q1 2026**

SITE PLAN



±70,000 SF

PHASE ONE

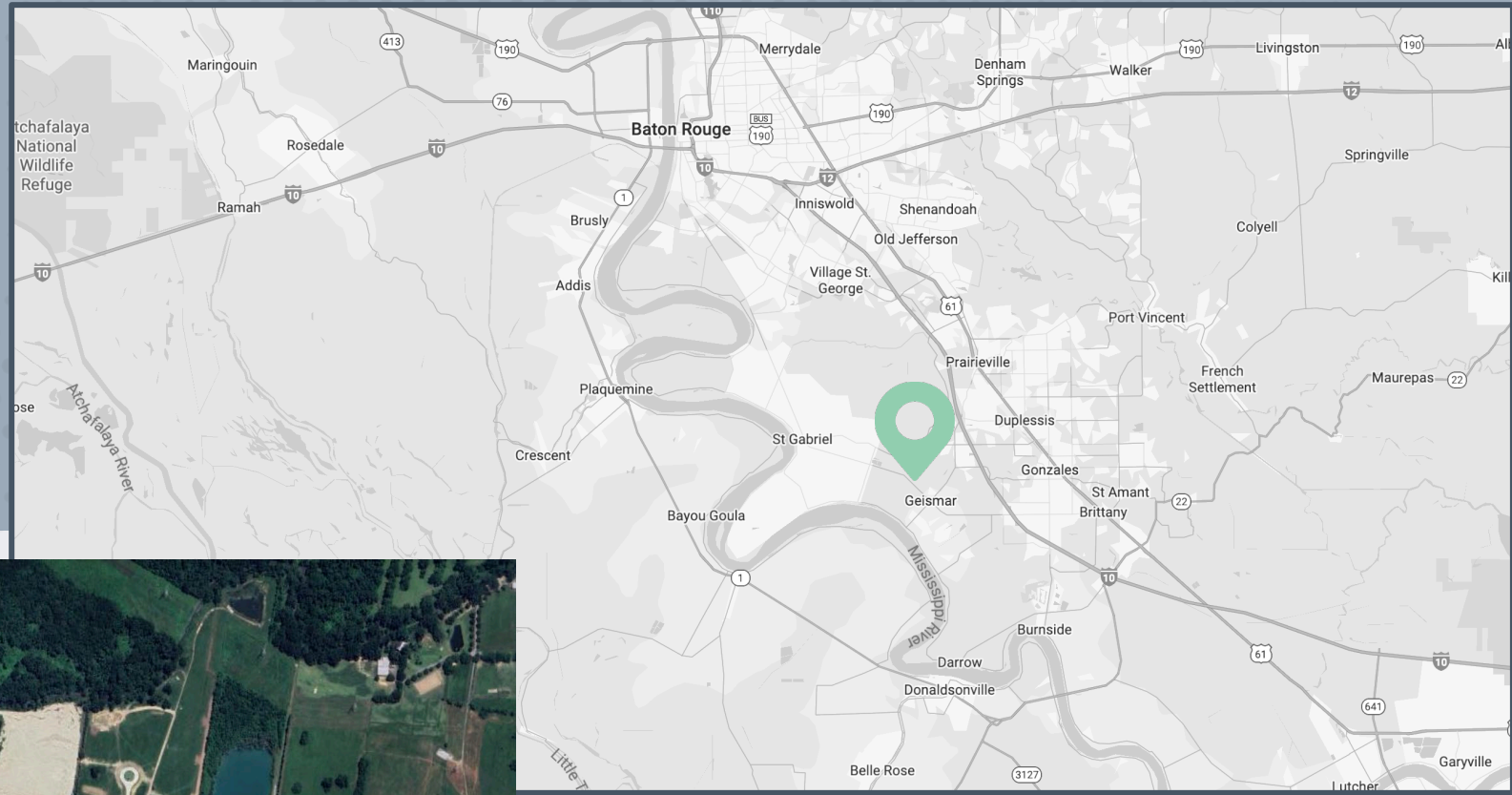


Total Available
±23,200 SF

Total Contiguous
±11,600 SF

Minimum Divisible
±3,700 SF

LOCATION MAPS



Prime Location in Major Petrochem Corridor

Fast Access to I-10 and Baton Rouge/New Orleans

Prime Staging Location and/or Supplemental Yard

AERIAL MAP



34532 HIGHWAY 30
GEISMAR, LA 70734

±3,700 – 23,200 SF
INDUSTRIAL FOR LEASE



MICHAEL CASHIO, SIOR, CCIM
Senior Vice President
+1 225 247 9812
michael.cashio@cbre.com
Owner/Agent

ALEX MCCOLLAM
Associate
+1 832 584 9162
alex.mccollam@cbre.com



© 2025 CBRE, Inc. All rights reserved. This information has been obtained from sources believed reliable but has not been verified for accuracy or completeness. CBRE, Inc. makes no guarantee, representation or warranty and accepts no responsibility or liability as to the accuracy, completeness, or reliability of the information contained herein. You should conduct a careful, independent investigation of the property and verify all information. Any reliance on this information is solely at your own risk. CBRE and the CBRE logo are service marks of CBRE, Inc. All other marks displayed on this document are the property of their respective owners, and the use of such marks does not imply any affiliation with or endorsement of CBRE. Photos herein are the property of their respective owners. Use of these images without the express written consent of the owner is prohibited.