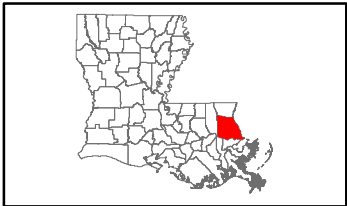


# Exhibit R. The Lakes at Madison Park Site Railroad Infrastructure Map

Proposed Rail Spur  
The Lakes at Madison Park Site  
St. Tammany Parish, LA

Darby Holdings, LLC

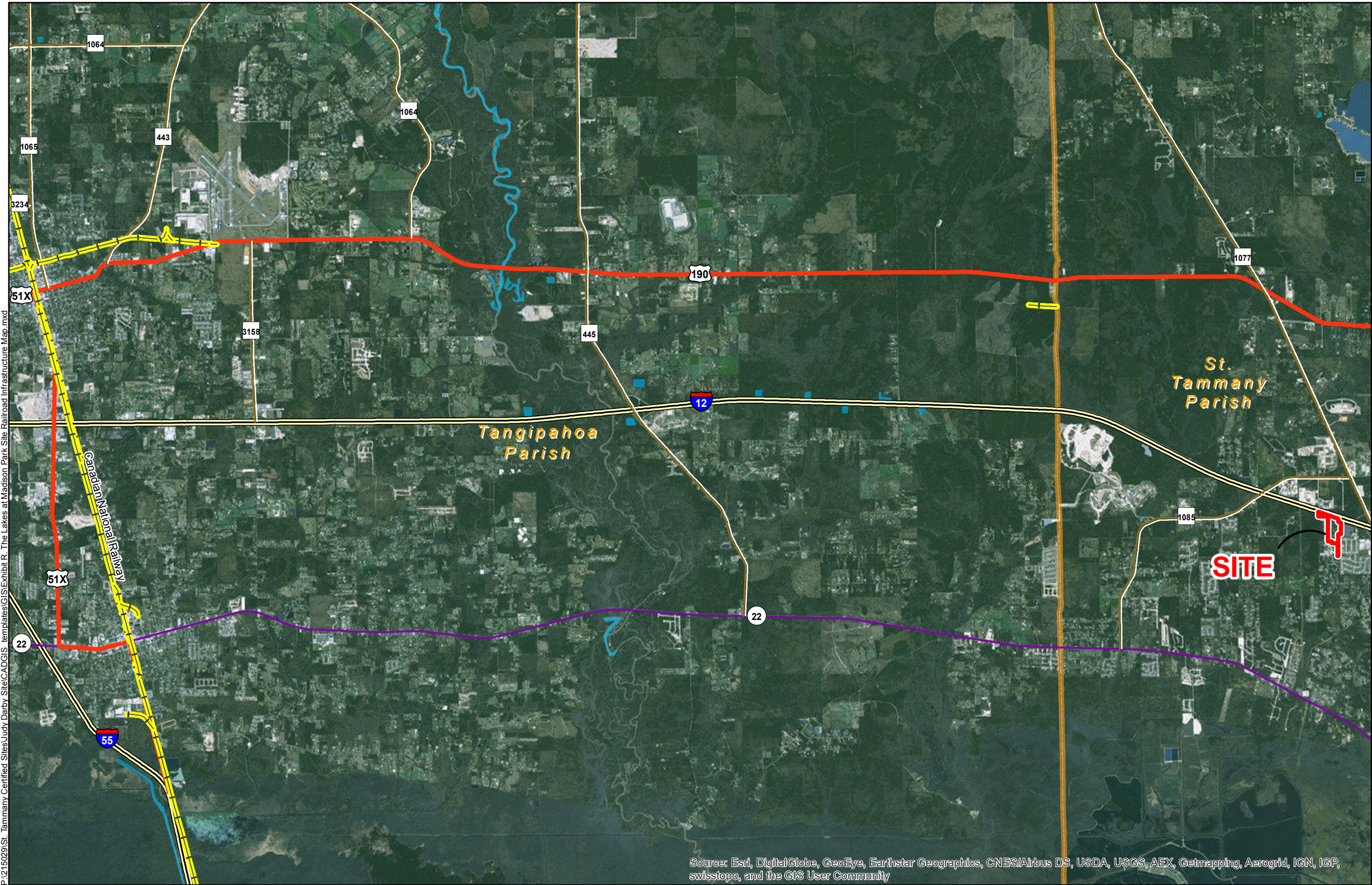


St. Tammany Parish

## LEGEND

- Site Boundary ( 33.548 Acres +/- )
- Existing Railroad
- Existing Roadway
  - Interstate
  - US Highway
  - Urban State Highway
  - Rural State Highway
- Waterbody
- Parish Boundary

P:\215029\St. Tammany Certified Sites\Judy Darby Site\CAD\GIS templates\GIS\Exhibit R. The Lakes at Madison Park Site Railroad Infrastructure Map.mxd



Source: Esri, DigitalGlobe, GeoEye, Earthstar Geographics, CNES/Airbus DS, USDA, USGS, AEX, Getmapping, Aerogrid, IGN, IGP, swisstopo, and the GIS User Community

## General Notes:

1. No attempt has been made by CSRS, Inc. to verify site boundary, title, actual legal ownership, deed restrictions, servitudes, easements, or other burdens on the property, other than that furnished by the client or his representative.
2. Transportation data from 2013 TIGER datasets via U.S. Census Bureau at [ftp2.census.gov/geo/tiger/TIGER2013](http://ftp2.census.gov/geo/tiger/TIGER2013).
3. 2013 aerial imagery from USDA-APFO National Agricultural Inventory Project (NAIP) and may not reflect current ground conditions.



Scale 1:80,000  
0 0.75 1.5 Miles



Date: 6/22/2015  
Project Number: 215029  
Drawn By: AMB  
Checked By: JAY

**CSRS**  
IMAGINE SHAPE DELIVER  
6767 Perkins Road Suite 200 Baton Rouge, LA 70808  
Telephone: 225 769-0546 Fax: 225 767-0060  
[www.csrsonline.com](http://www.csrsonline.com)