

Exhibit C. Chemin 2 Site Property Boundary Exhibit

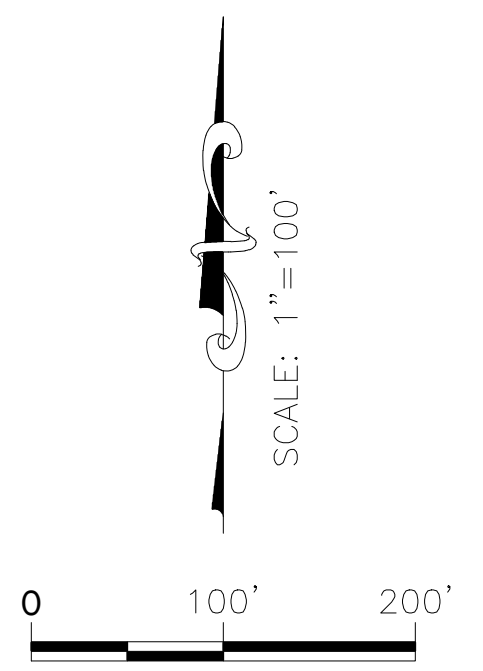


CHEMIN - 2 SITE PROPERTY BOUNDARY EXHIBIT

T-11-S R-5-E



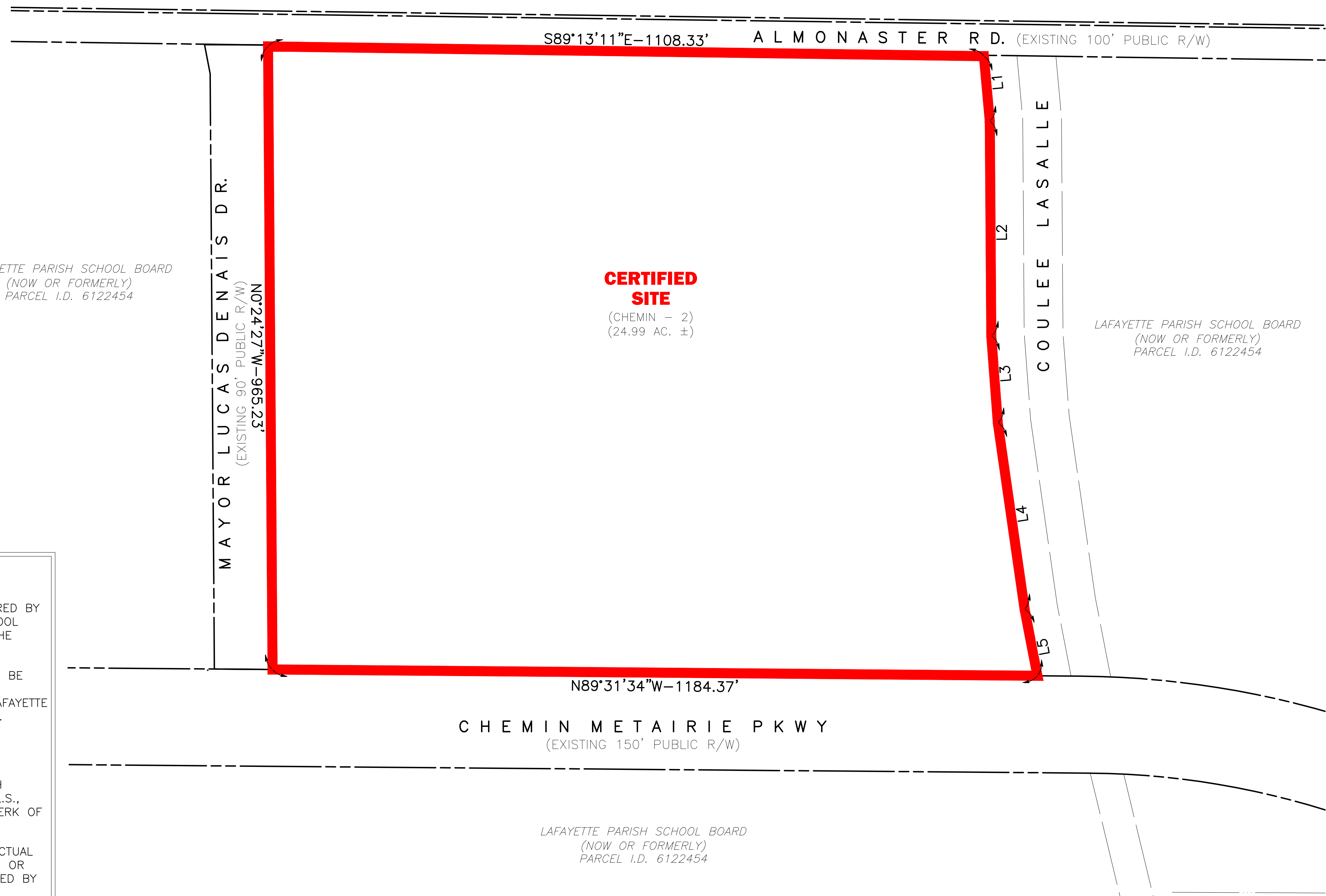
VICINITY MAP
Scale: 1"=3000'±



LAFAYETTE PARISH SCHOOL BOARD
(NOW OR FORMERLY)
PARCEL I.D. 6001934

LEGEND

- CERTIFIED SITE BOUNDARY (24.99 ACRES ±)
- RIGHT OF WAY
- ADJACENT PROPERTY LINE



LAFAYETTE PARISH SCHOOL BOARD
(NOW OR FORMERLY)
PARCEL I.D. 6122454

LAFAYETTE PARISH SCHOOL BOARD
(NOW OR FORMERLY)
PARCEL I.D. 6122454

S89°13'11"E-1108.33' ALMONASTER RD. (EXISTING 100' PUBLIC R/W)

N89°31'34"W-1184.37'

CHEMIN METAIRIE PKWY
(EXISTING 150' PUBLIC R/W)

LAFAYETTE PARISH SCHOOL BOARD
(NOW OR FORMERLY)
PARCEL I.D. 6122454

#	DIR.	DIST.
L1	S5°14'31"E	101.09'
L2	S0°23'33"E	332.67'
L3	S4°17'24"E	135.33'
L4	S8°09'45"E	291.64'
L5	S10°57'19"E	104.86'

- GENERAL NOTES:**
- REFERENCE DOCUMENTS:
 - "PLAT OF SURVEY SHOWING RIGHT OF WAY TO BE ACQUIRED BY THE CITY OF YOUNGSSVILLE FROM LAFAYETTE PARISH SCHOOL BOARD" BY DOUGLAS A. DOMINGUE R.S., RECORDED IN THE LAFAYETTE PARISH CLERK OF COURTS OFFICE, FILE NO. 2010-00025638
 - "PLAT SHOWING UTILITY & CONSTRUCTION SERVITUDES TO BE ACQUIRED BY THE CITY OF YOUNGSSVILLE, LA. FROM LAFAYETTE PARISH SCHOOL BOARD" RECORDED IN THE LAFAYETTE PARISH CLERK OF COURT OFFICE, FILE NO. 2016-14308.
 - "CENTERPOINT ENERGY ACQUIRE 5' RIGHT OF WAY FROM LAFAYETTE PARISH SCHOOL BOARD", RECORDED IN THE LAFAYETTE PARISH CLERK OF COURT OFFICE, FILE NO. 2017-9305
 - "RIGHT OF WAY AND SERVITUDES" FOR YOUNGSSVILLE HIGH SCHOOL ENTRANCE ROAD, BY SHAWN P. MACMENAMIN P.L.S., DATED 4/5/17, RECORDED IN THE LAFAYETTE PARISH CLERK OF COURT OFFICE, FILE NO. 2017-26960
 - NO ATTEMPT HAS BEEN MADE BY CSRS, INC. TO VERIFY TITLE, ACTUAL LEGAL OWNERSHIP, DEED RESTRICTIONS, SERVITUDES, EASEMENTS, OR OTHER BURDENS ON THE PROPERTY, OTHER THAN THAT FURNISHED BY THE CLIENT OR HIS REPRESENTATIVE.
 - THIS IS NOT A PROPERTY BOUNDARY SURVEY AND IS NOT INTENDED TO MEET THE LOUISIANA STANDARDS OF PRACTICE FOR PROPERTY BOUNDARY SURVEYS. BEARINGS AND DISTANCES OF TRACTS WERE OBTAINED FROM DOCUMENT REFERENCED ABOVE.
 - THE COORDINATE SYSTEM USED IS NAD83 LOUISIANA STATE PLANE SOUTH ZONE (US SURVEY FEET). COORDINATES WERE DERIVED BY OVERLAYING THE BOUNDARY ON AN AERIAL PHOTOGRAPH AND ARE WITHIN 100' OF TRUE LOCATION.
 - RIGHTS OF WAY, EASEMENTS, AND SERVITUDES SHOWN HEREON HAVE NOT BEEN VERIFIED IN THE FIELD AND ANY SHOWN ARE FOR GENERAL LOCATIVE INFORMATION ONLY.

COMPILED MAP:

THIS IS NOT A PROPERTY BOUNDARY SURVEY AND IS NOT INTENDED TO MEET THE LOUISIANA STANDARDS OF PRACTICE FOR PROPERTY BOUNDARY SURVEYS. BEARINGS AND DISTANCES OF TRACTS WERE OBTAINED FROM REFERENCE DOCUMENTS.

NO DATA HAS BEEN FIELD VERIFIED BY THE SURVEYOR IN RESULT TO THIS MAP.

Revisions:

8555 United Plaza Blvd., Baton Rouge, LA 70809
Telephone: 225 769-0546 Fax: 225 767-0060
www.csrsinc.com | westwoodps.com

PROPERTY BOUNDARY EXHIBIT

OF

CHEMIN - 2 SITE

LOCATED IN

SECTION 16

T-11-S R-5-E

SOUTHWESTERN LAND DISTRICT

LAFAYETTE PARISH

LOUISIANA

FOR

LED

Date:	FEBRUARY 9, 2026
Project Number:	0074021.00
Drawn By:	HCL
Checked By:	TBO
Sheet:	