

Exhibit R.

Syngenta Site

Telecommunications Infrastructure Map



Baton Rouge Area Chamber®

Syngenta Site Telecommunications Infrastructure Map

Syngenta Site
Iberville Parish, LA

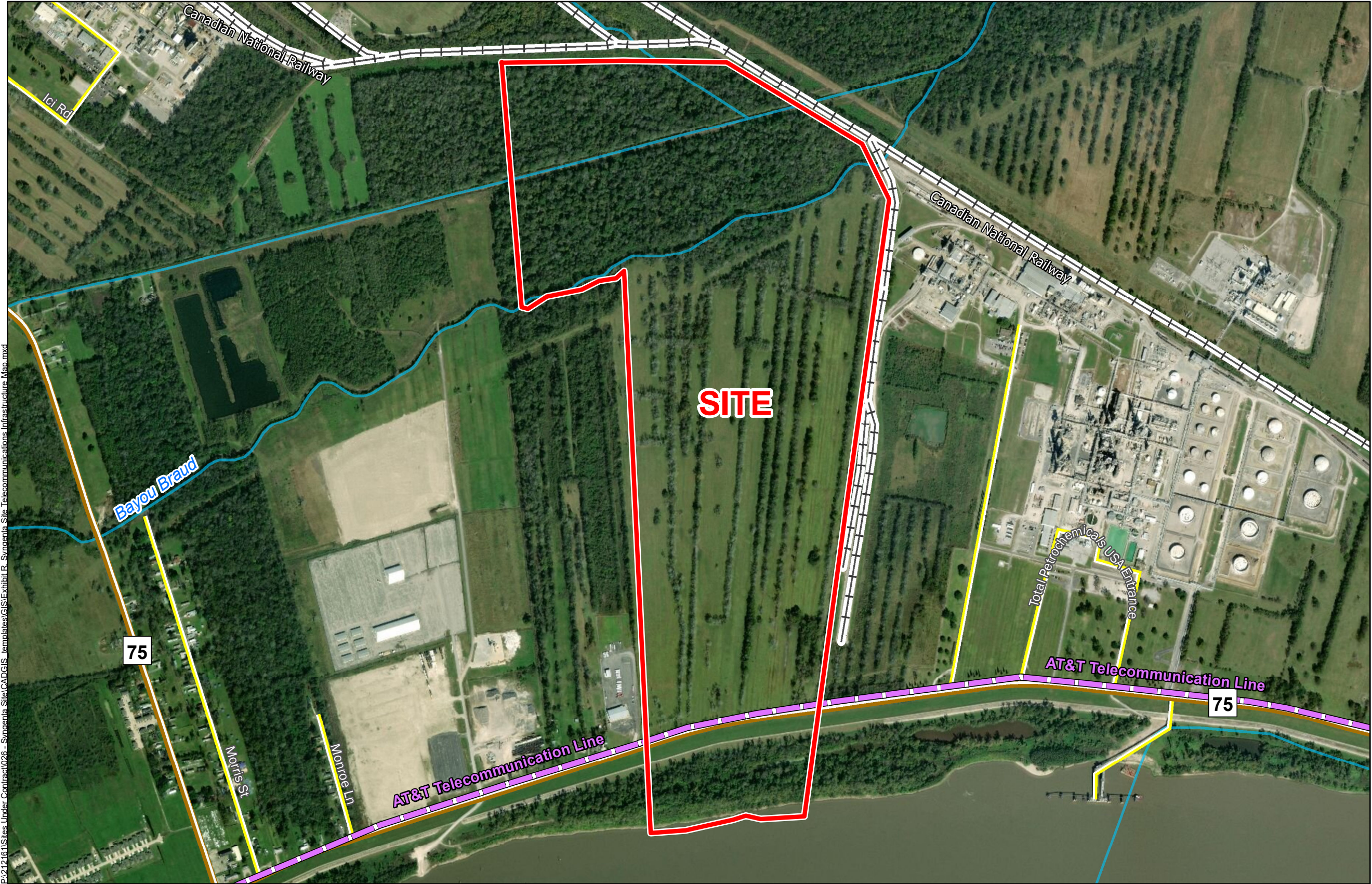
BRAC



Iberville Parish

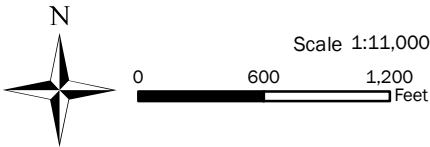
LEGEND

- Site Boundary
- AT&T Telecommunication Lines
- Existing Roadway
 - Rural State Highway
 - Local
- Railroad
- Stream



General Notes:

1. No attempt has been made by CSRS, Inc. to verify site boundary, title, actual legal ownership, deed restrictions, servitudes, easements, or other burdens on the property, other than that furnished by the client or his representative.
2. Transportation data from 2013 TIGER datasets via U.S. Census Bureau at <http://ftp2.census.gov/geo/tiger/TIGER2013>.
3. Utility information from visual inspection and/or the individual utility operators. Exact field location has not been determined by survey. The lines shown are an approximate representation only and may have been offset for depiction purposes.
4. 2015 aerial imagery from USDA-APFO National Agricultural Inventory Project (NAIP) and may not reflect current ground conditions.



Date: 3/4/2020
Project Number: 212161
Drawn By: BNF
Checked By: EEB

