

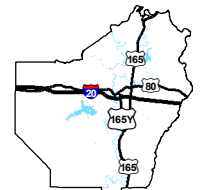
Exhibit U. Calhoun Technology Park - South Site U.S. Geological Survey Quad Map



Calhoun Technology Park - South Site U.S. Geological Survey Quad Map

Calhoun Technology
Park - South Site
Ouachita Parish, LA

NLEP

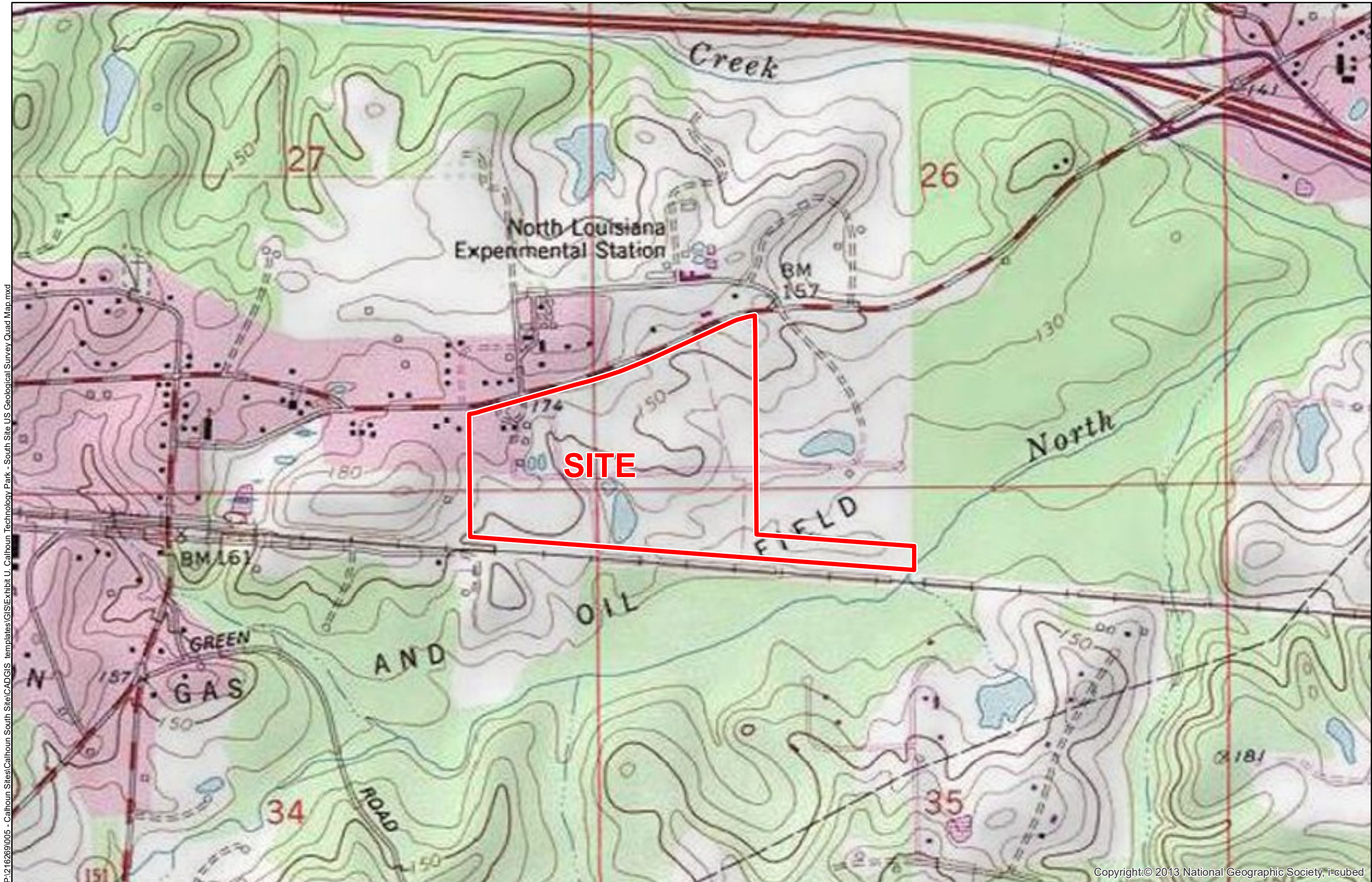


Ouachita Parish

LEGEND

Site Boundary

P:\216269\005 - Calhoun Sites\Calhoun South Site\CAD\GIS templates\GIS\Exhibit U - Calhoun Technology Park - South Site U.S. Geological Survey Quad Map.mxd



Copyright:© 2013 National Geographic Society, i-cubed

General Notes:

1. No attempt has been made by CSRS, Inc. to verify site boundary, title, actual legal ownership, deed restrictions, servitudes, easements, or other burdens on the property, other than that furnished by the client or his representative.
2. Topo data and symbologies from USDA NRCS site <http://datagateway.nrcs.usda.gov/GDGOrder.aspx> as created by USDA/NRCS National Geospatial Center of Excellence "USDA-NRCS-NCGC Digital Raster Graphic MrSID Mosaic".



Scale 1:10,000

0 530 1,060 Feet

CSRS
IMAGINE SHAPE DELIVER
6767 Perkins Road Suite 200 Baton Rouge, LA 70808
Telephone: 225 769-0546 Fax: 225 767-0060
www.csrsonline.com