

Exhibit V. Jamestown Business Park U.S. Geological Survey Quad Map

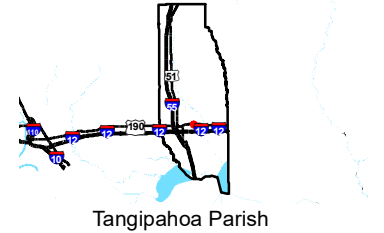
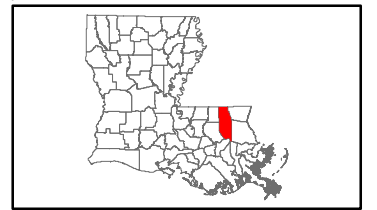


GREATER NEW ORLEANS
INC
REGIONAL ECONOMIC DEVELOPMENT

Jamestown Business Park U.S. Geological Survey Quad Map

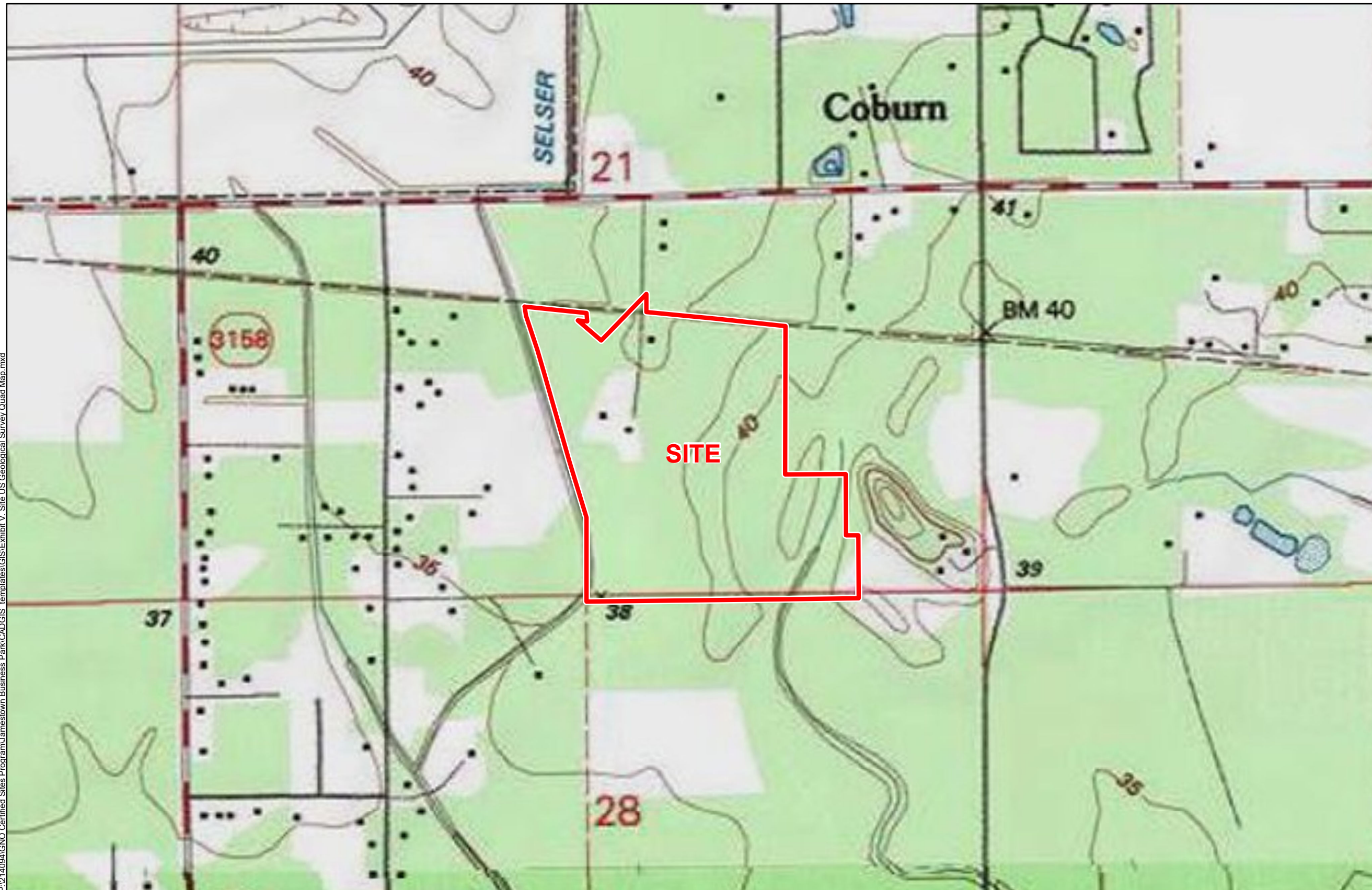
Jamestown Business Park
Tangipahoa Parish, LA

GNO



LEGEND

Site Boundary (71.46 Ac.±)

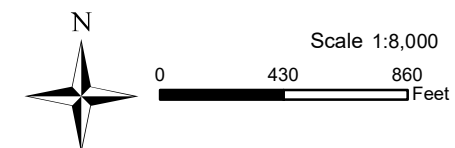


P:\214094\GNO Certified Sites Program\Jamestown Business Park\CAD\GIS templates\GIS\Exhibit V_Site US Geological Survey Quad Map.mxd



Date:	10/1/2021
Project Number:	214094
Drawn By:	SEW
Checked By:	EEB

- General Notes:
1. No attempt has been made by CSRS, Inc. to verify site boundary, title, actual legal ownership, deed restrictions, servitudes, easements, or other burdens on the property, other than that furnished by the client or his representative.
 2. Transportation data from 2013 TIGER datasets via U.S. Census Bureau at <ftp://ftp2.census.gov/geo/tiger/TIGER2013>.
 3. 2015 aerial imagery from USDA-APFO National Agricultural Inventory Project (NAIP) and may not reflect current ground conditions.



CSRS