

# Exhibit L. Terre Haute Development Potable Water Infrastructure Map

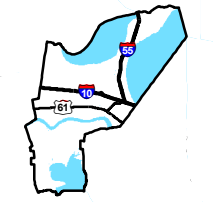


**GREATER NEW ORLEANS**  
INC  
REGIONAL ECONOMIC DEVELOPMENT

# Terre Haute Development Potable Water Infrastructure Map

Terre Haute Development  
St. John the Baptist Parish, LA

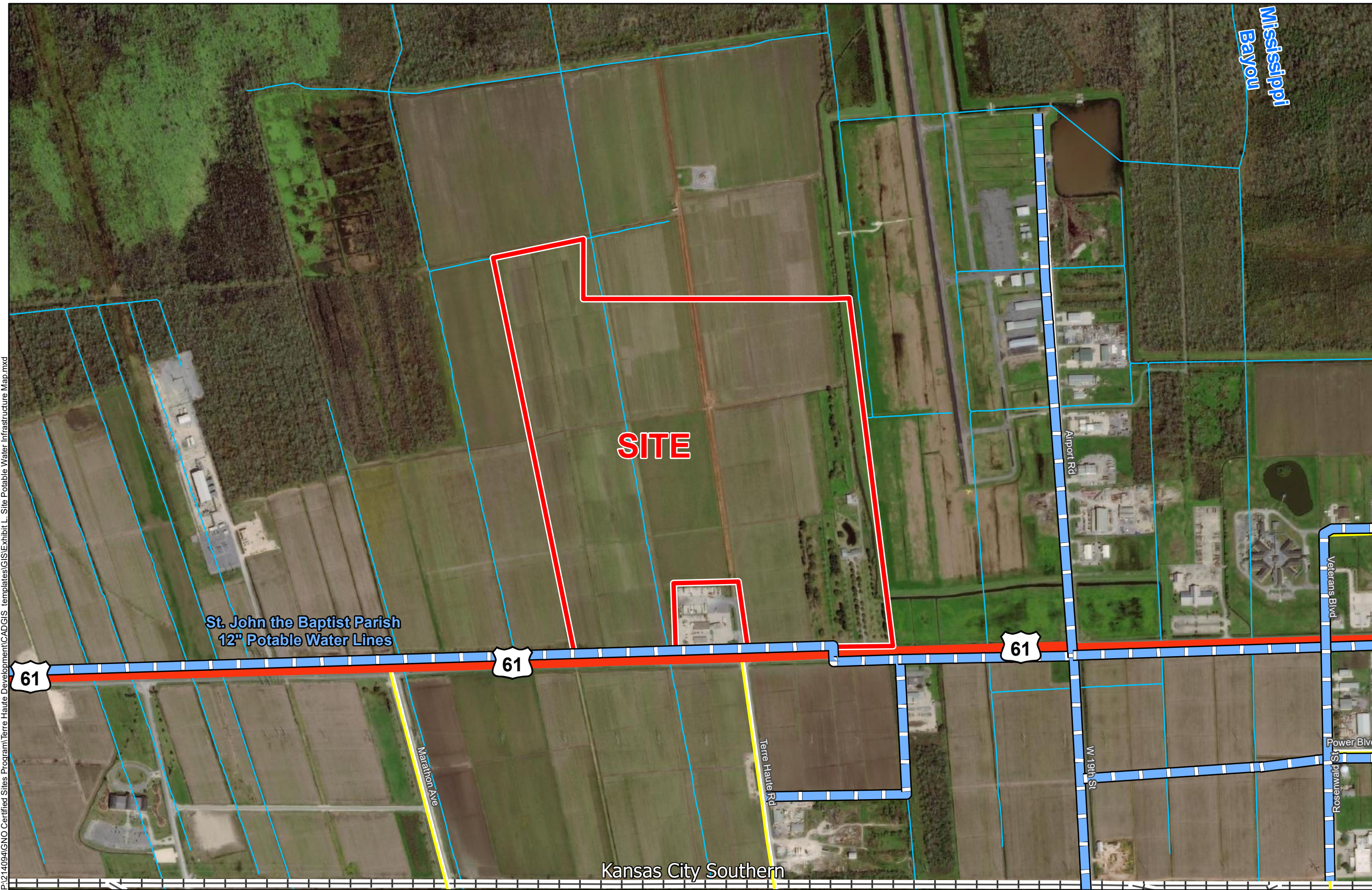
GNO



St. John the Baptist Parish

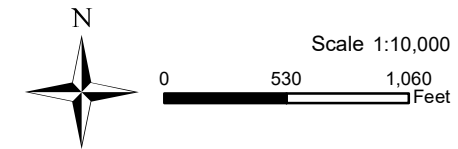
### LEGEND

- St. John the Baptist Parish 12" Potable Water Lines
- Site Boundary (185.5 Ac.±)
- Existing Roadway**
- US Highway
- Local Roads
- Railroad
- Stream



P:\214094\GNO Certified Sites Program\Terre Haute Development\CAD\GIS templates\GIS\Exhibit L - Site Potable Water Infrastructure Map.mxd

- General Notes:
1. No attempt has been made by CSRS, Inc. to verify site boundary, title, actual legal ownership, deed restrictions, servitudes, easements, or other burdens on the property, other than that furnished by the client or his representative.
  2. Transportation data from 2013 TIGER datasets via U.S. Census Bureau at [ftp://ftp2.census.gov/geo/tiger/TIGER2013](http://ftp2.census.gov/geo/tiger/TIGER2013).
  3. 2015 aerial imagery from USDA-APFO National Agricultural Inventory Project (NAIP) and may not reflect current ground conditions.
  4. Utility information from visual inspection and/or the individual utility operators. Exact field location has not been determined by survey. The lines shown are an approximate representation only and may have been offset for depiction purposes.



Date:	6/28/2021
Project Number:	214094
Drawn By:	SEW
Checked By:	EEB

