

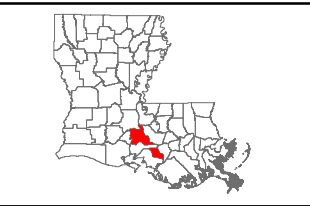
Exhibit R. Spanish Trail Industrial Park Telecommunications Infrastructure Map



Spanish Trail Industrial Park Telecommunications Infrastructure Map

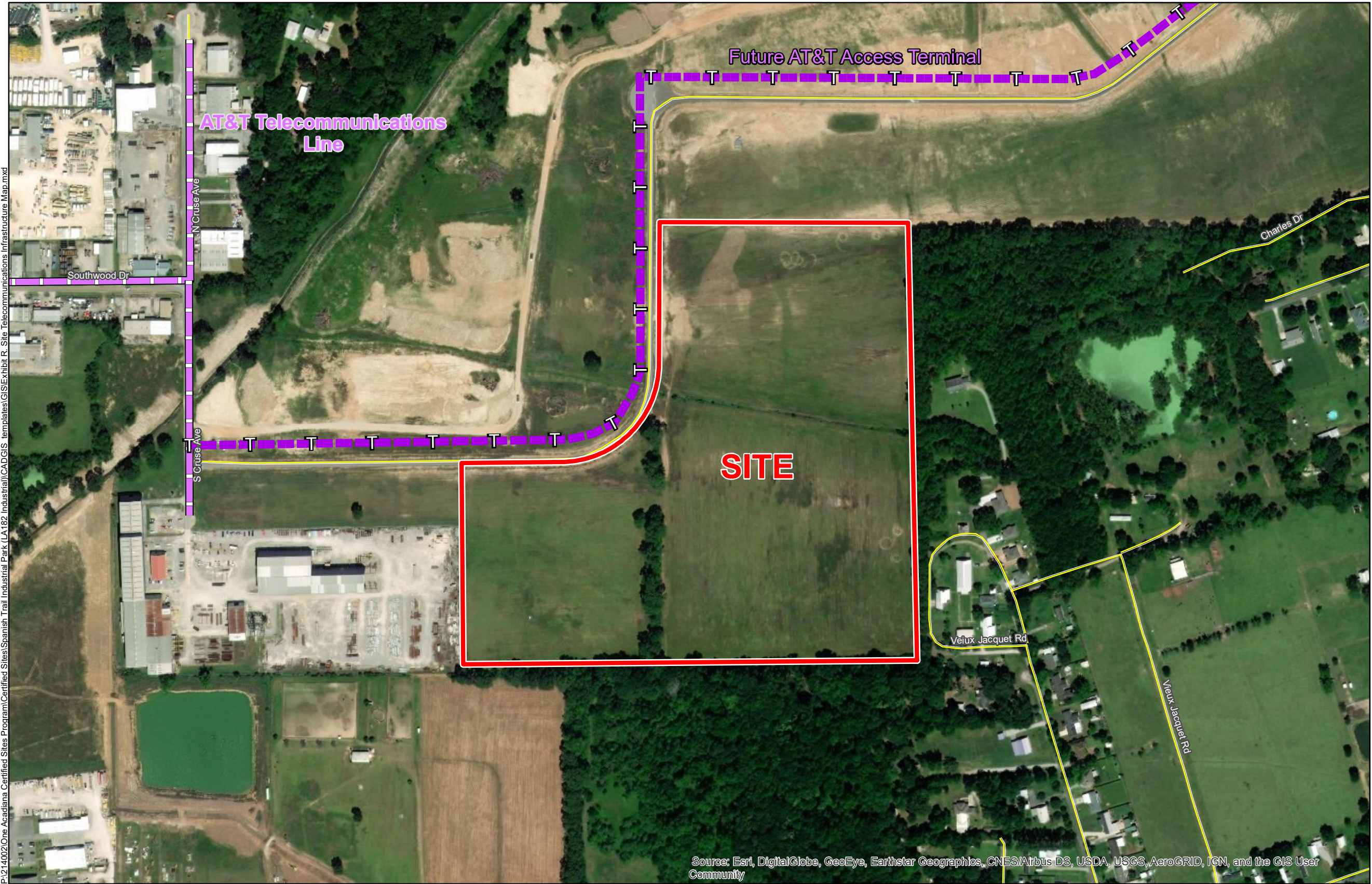
Spanish Trail Industrial Park
St. Martin Parish, LA

One Acadiana



LEGEND

- Site Boundary
- AT&T Telecommunication Lines
 - Existing AT&T Telecommunication Lines
 - Future AT&T Access
- Local Roads



P:\214002\One Acadiana Certified Sites\Spanish Trail Industrial Park (LA182 Industrial)\CAD\GIS templates\GIS\Exhibit R, Site Telecommunications Infrastructure Map.mxd

- General Notes:
1. No attempt has been made by CSRS, Inc. to verify site boundary, title, actual legal ownership, deed restrictions, servitudes, easements, or other burdens on the property, other than that furnished by the client or his representative.
 2. Transportation data from 2013 TIGER datasets via U.S. Census Bureau at <ftp://ftp2.census.gov/geo/tiger/TIGER2013>.
 3. Utility information from visual inspection and/or the individual utility operators. Exact field location has not been determined by survey. The lines shown are an approximate representation only and may have been offset for depiction purposes.
 4. 2015 aerial imagery from USDA-APFO National Agricultural Inventory Project (NAIP) and may not reflect current ground conditions.

Source: Esri, DigitalGlobe, GeoEye, Earthstar Geographics, CNES/Airbus DS, USDA, USGS, AeroGRID, IGN, and the GIS User Community



Scale 1:4,500
0 240 480 Feet



Date:	2/25/2020
Project Number:	214002
Drawn By:	BNF
Checked By:	DWC

