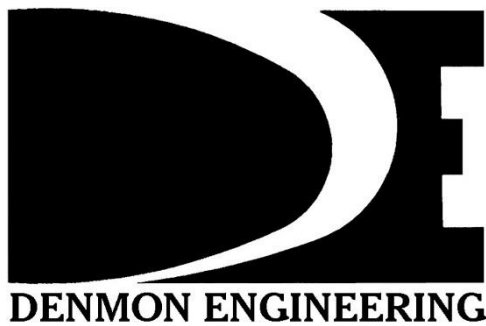


EXHIBIT V

EAST OUACHITA DEVELOPMENT

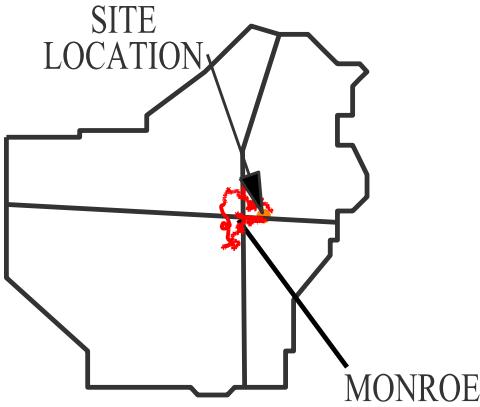
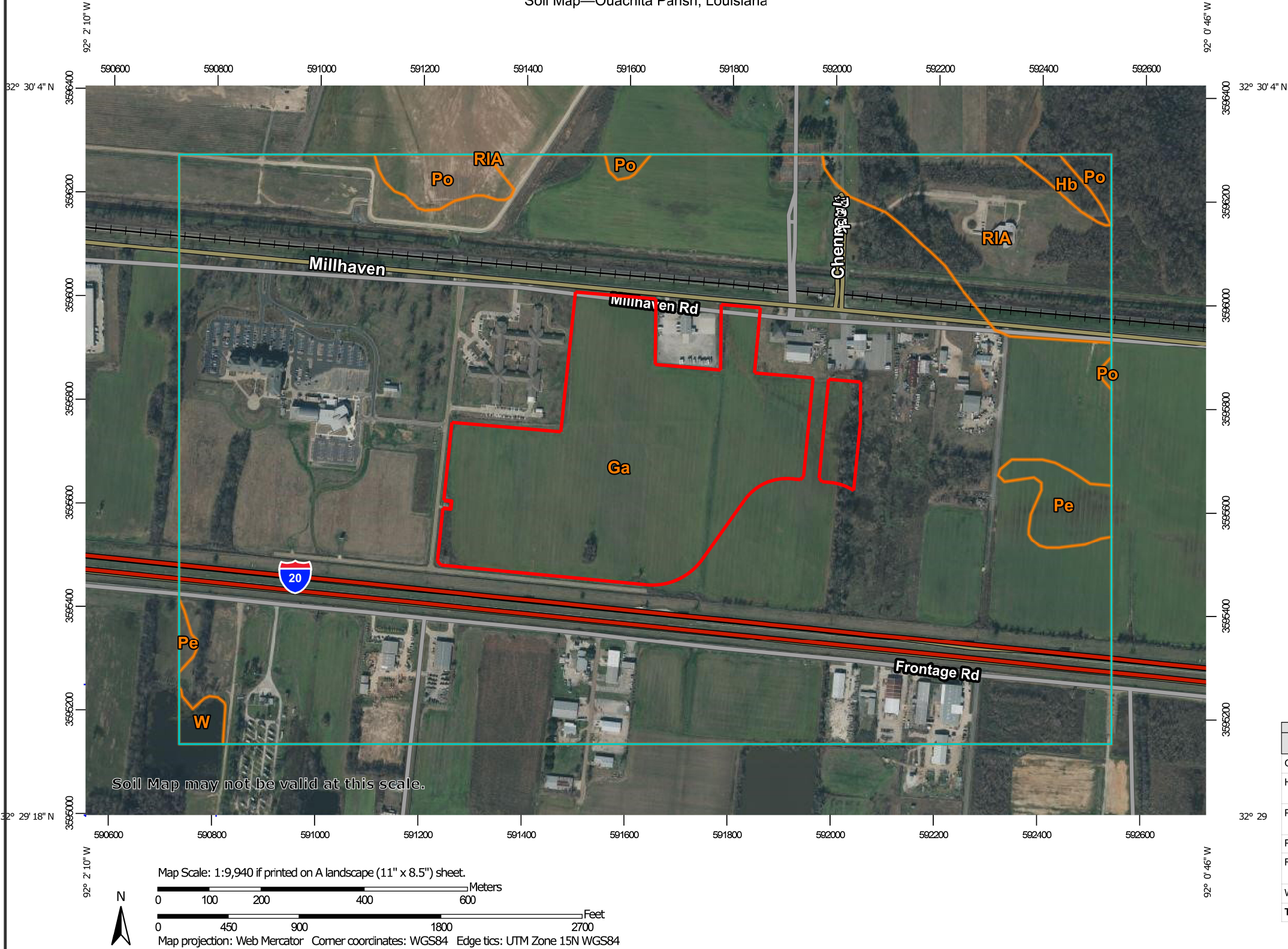
SCS SOIL MAP



Denmon Engineering, Inc. - P.O. Box 8460, Monroe, LA 71211 – 318-388-1422 – www.denmon.com

EAST OUACHITA DEVELOPMENT SCS SOIL MAP

Soil Map—Ouachita Parish, Louisiana



LEGEND

— PROPERTY BOUNDARY

Map Unit Legend

Map Unit Symbol	Map Unit Name	Acres in AOI	Percent of AOI
Ga	Gallion silt loam	463.0	90.6%
Hb	Hebert silt loam, 0 to 1 percent slopes	2.1	0.4%
Pe	Perry clay, occasionally flooded	6.4	1.3%
Po	Portland silt loam	7.5	1.5%
RIA	Rilla silt loam, 0 to 1 percent slopes	30.1	5.9%
W	Water	1.9	0.4%
Totals for Area of Interest		510.8	100.0%