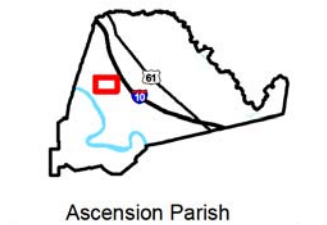


# Exhibit O. Grezaffi South Site Roadway Transportation Infrastructure Map

Local Transportation Infrastructure  
Grezaffi South Site  
Ascension Parish, LA



**LEGEND**

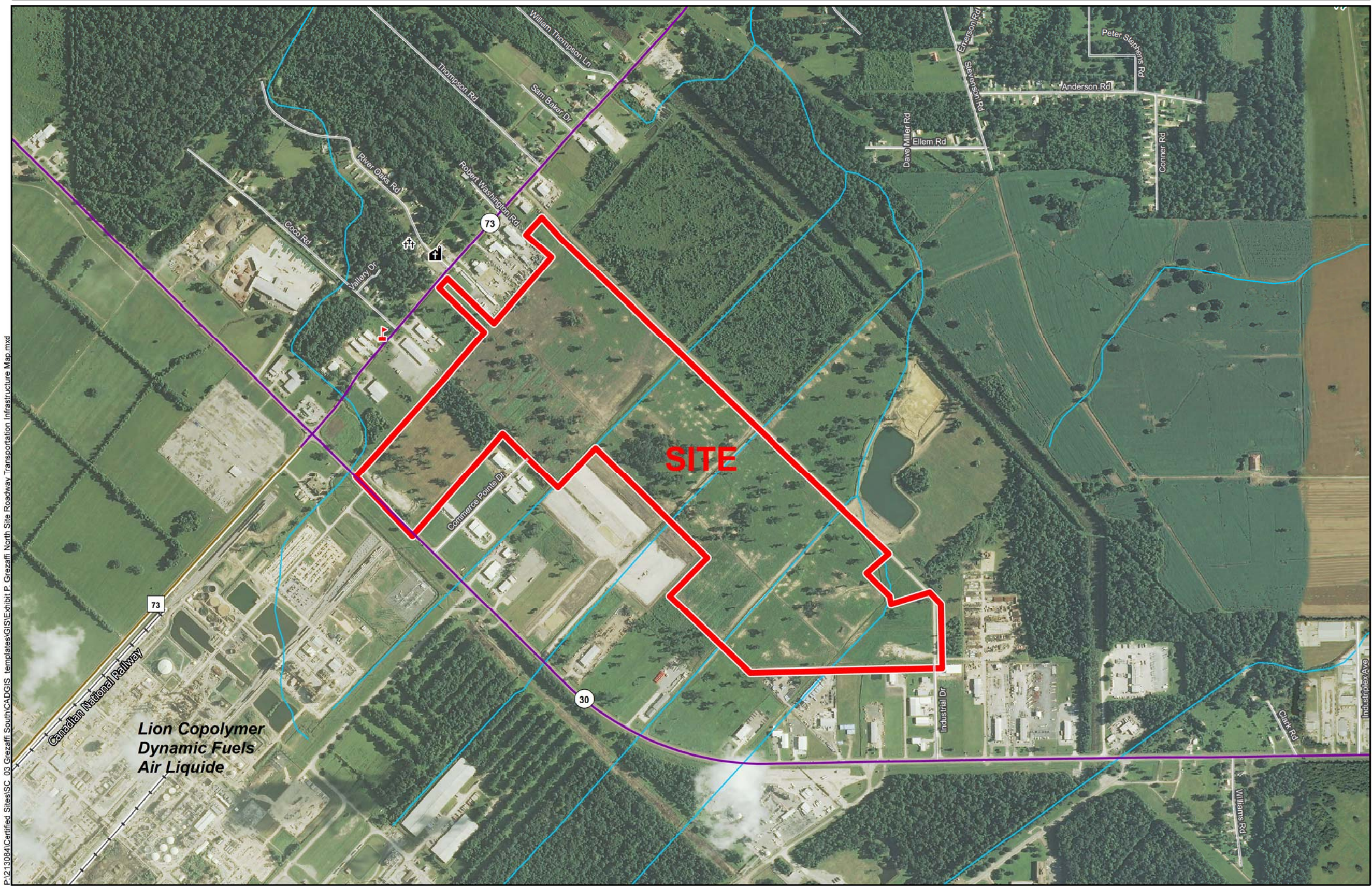
Site Boundary (212.87 Acres +/-)

**Civic Feature**

- School
- Cemetery
- Church
- Airport

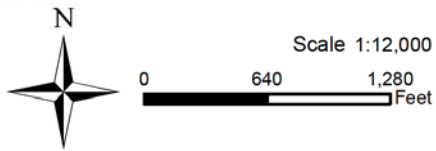
**Existing Roadway**

- Urban State Highway
- Rural State Highway
- Local Roads
- Railroad
- Stream



General Notes:

1. No attempt has been made by CSRS, Inc. to verify site boundary, title, actual legal ownership, deed restrictions, servitudes, easements, or other burdens on the property, other than that furnished by the client or his representative.
2. Transportation data from 2013 TIGER datasets via U.S. Census Bureau at [ftp2.census.gov/geo/tiger/TIGER2013](http://ftp2.census.gov/geo/tiger/TIGER2013).
3. 2013 aerial imagery from USDA-APFO National Agricultural Inventory Project (NAIP) and may not reflect current ground conditions.



Baton Rouge Area Chamber.

|                 |               |
|-----------------|---------------|
| Date:           | 11/19/2014    |
| Project Number: | 213084.20.002 |
| Drawn By:       | MAT           |
| Checked By:     | TMG           |

**CSRS**  
IMAGINE SHAPE DELIVER

6767 Perkins Road Suite 200 Baton Rouge, LA 70808  
Telephone: 225 769-0546 Fax: 225 767-0060  
[www.csronline.com](http://www.csronline.com)