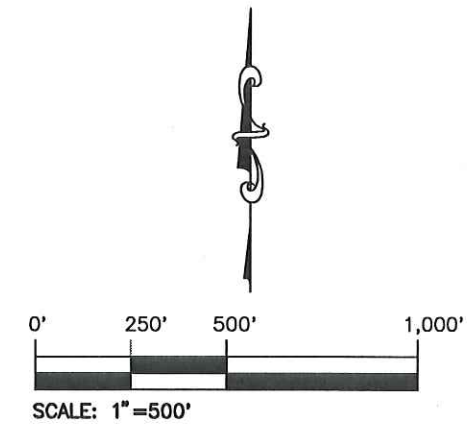
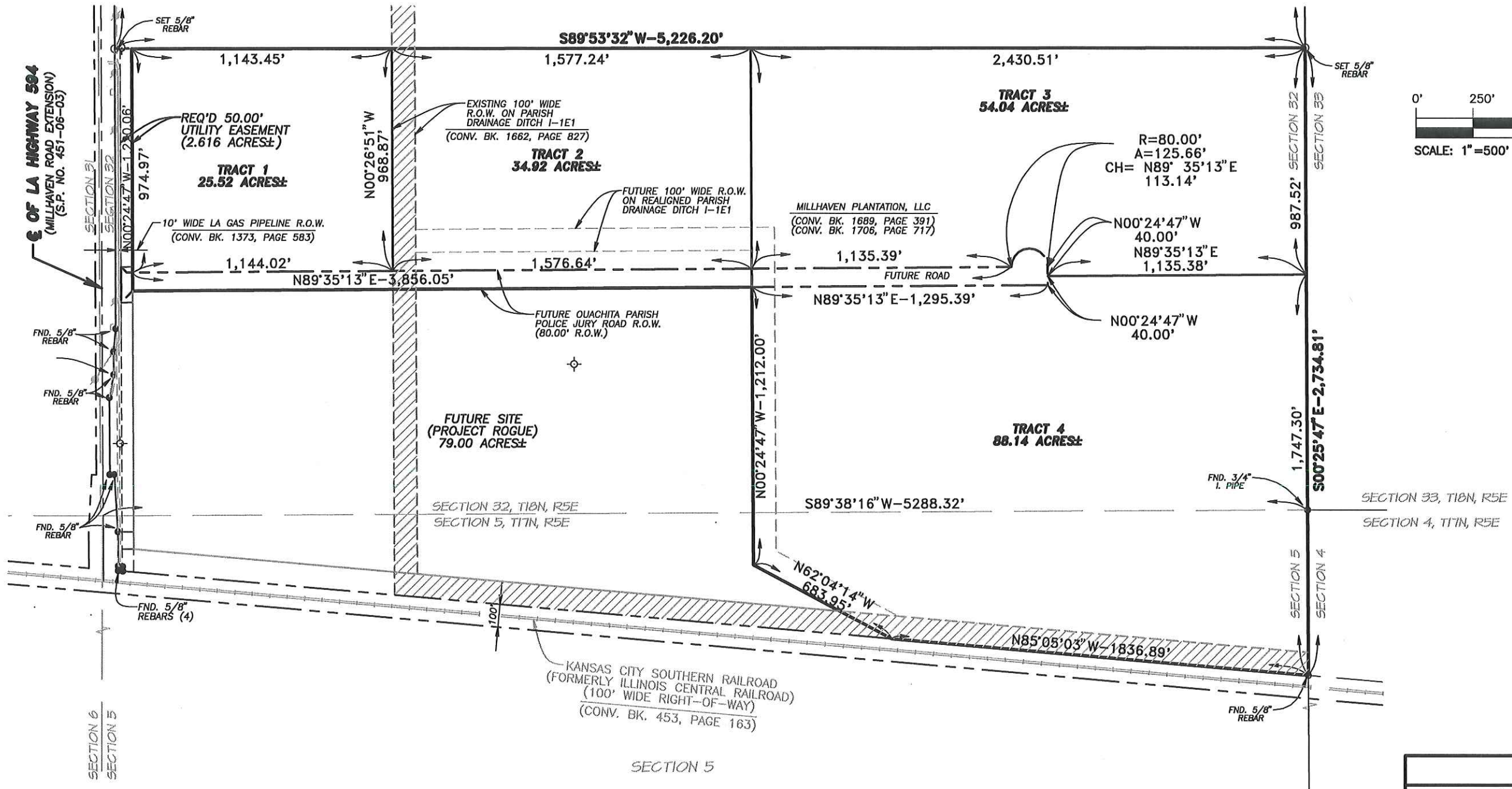


LAND DISTRICT NORTH OF RED RIVER
SECTION 32, T-18-N, R-5-E &
SECTION 5, T-17-N, R-5-E
OUACHITA PARISH, LOUISIANA



PRELIMINARY

This document is not to be used for construction, bidding, recordation, conveyance, sales, or as the basis for the issuance of a permit.

Prepared By: Kevin E. Crosby License No. 4901
Lazenby & Associates, Inc., Consulting Engineers & Land Surveyors
2000 North 7th Street, West Monroe, LA 71291

PROPOSED SITE PLAN	
MILLHAVEN PLANTATION	
LA HIGHWAY 594 (MILLHAVEN ROAD EXTENSION) MONROE, LOUISIANA	
SITUATED IN SECTION 32, T-18-N, R-5-E & SECTION 5, T-17-N, R-5-E LAND DISTRICT NORTH OF RED RIVER OUACHITA PARISH, LOUISIANA	
LAZENBY & ASSOCIATES, INC. CONSULTING ENGINEERS & LAND SURVEYORS 2000 NORTH 7TH STREET WEST MONROE, LOUISIANA (318) 387-2710	
DESIGNED K.E.C.	CHECKED K.E.C.
DRAWN L.L.M.	CHECKED K.E.C.
APPROVED	DATE MAY, 2017
JOB NO. 17E026.00	SCALE 1" = 500'
CLIENT: FREDERICK HUENEFELD	

DATE	DESCRIPTION	BY