

Exhibit A. Foti - Highway 18 Color Aerial Photo Map



Foti - Highway 18 Color Aerial Photo Map



LEGEND

- Foti - Highway 18 (± 22.70 Ac.)
- LED Certified Site Area (± 17.73 Ac.)
- Existing Roadway**
 - Highway
 - Local Road
- Picture Location



SITE NAME: Foti - Highway 18

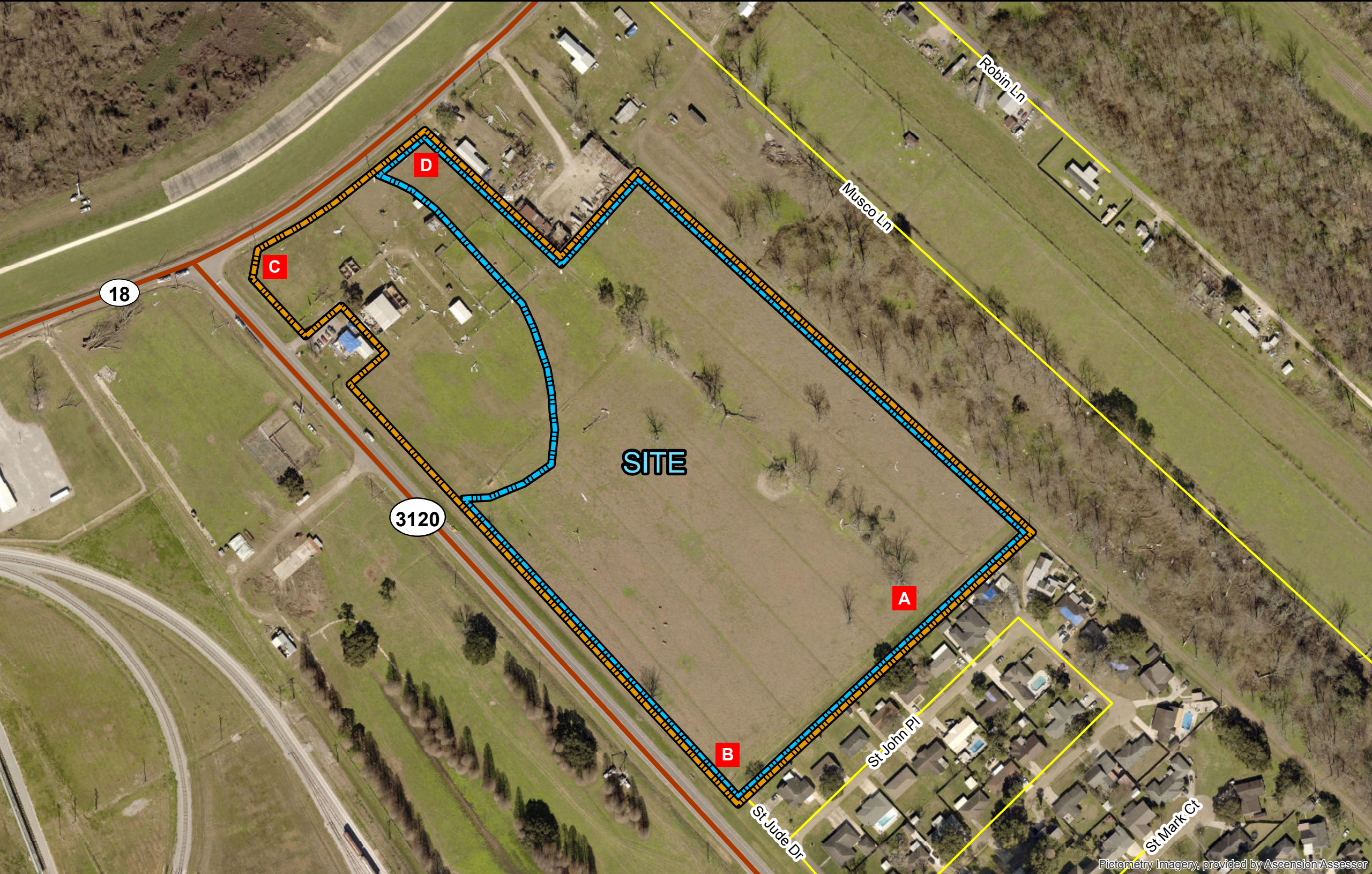
Drawn By: CDS

Checked By: GJB

Date: 6/4/2018

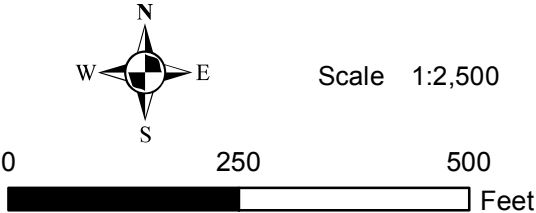


8352 Bluebonnet Blvd.
Baton Rouge, LA 70810
Phone: 225-751-4490
www.ddgpc.com

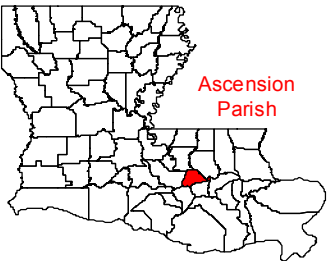


General Notes:
1. The information presented herein was obtained from various resources and should be considered preliminary.
2. No attempt has been made by Duplantis Design Group, PC to verify site boundary, title, actual legal ownership, deed restrictions, servitudes, easements, or other burdens on the property.

References:
1. 2017 Aerial imagery from Ascension Parish Assessors website
2. Site boundary from Landsource, Inc.
3. Transportation data from U.S. Census Bureau



Foti - Highway 18 Color Aerial Photo Map



A



B



C



D



SITE NAME: Foti - Highway 18

Drawn By: CDS

Checked By: GJB

Date: 12/18/2017



8352 Bluebonnet Blvd.
Baton Rouge, LA 70810
Phone: 225-751-4490
www.ddgpc.com

General Notes:
1. No attempt has been made by Duplantis Design Group, PC to verify site boundary, title, actual legal ownership, deed restrictions, servitudes, easements, or other burdens on the property.
2. Streetview photographs are from a site visit conducted by Duplantis Design Group, PC on September 18, 2017 and may not reflect current ground conditions.