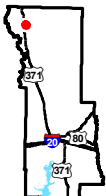
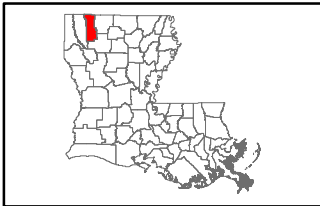


# Exhibit P. North Webster Parish Industrial District Site Roadway Transportation Infrastructure Wide Map

Area Transportation Infrastructure  
NWPID Site  
Webster Parish, LA

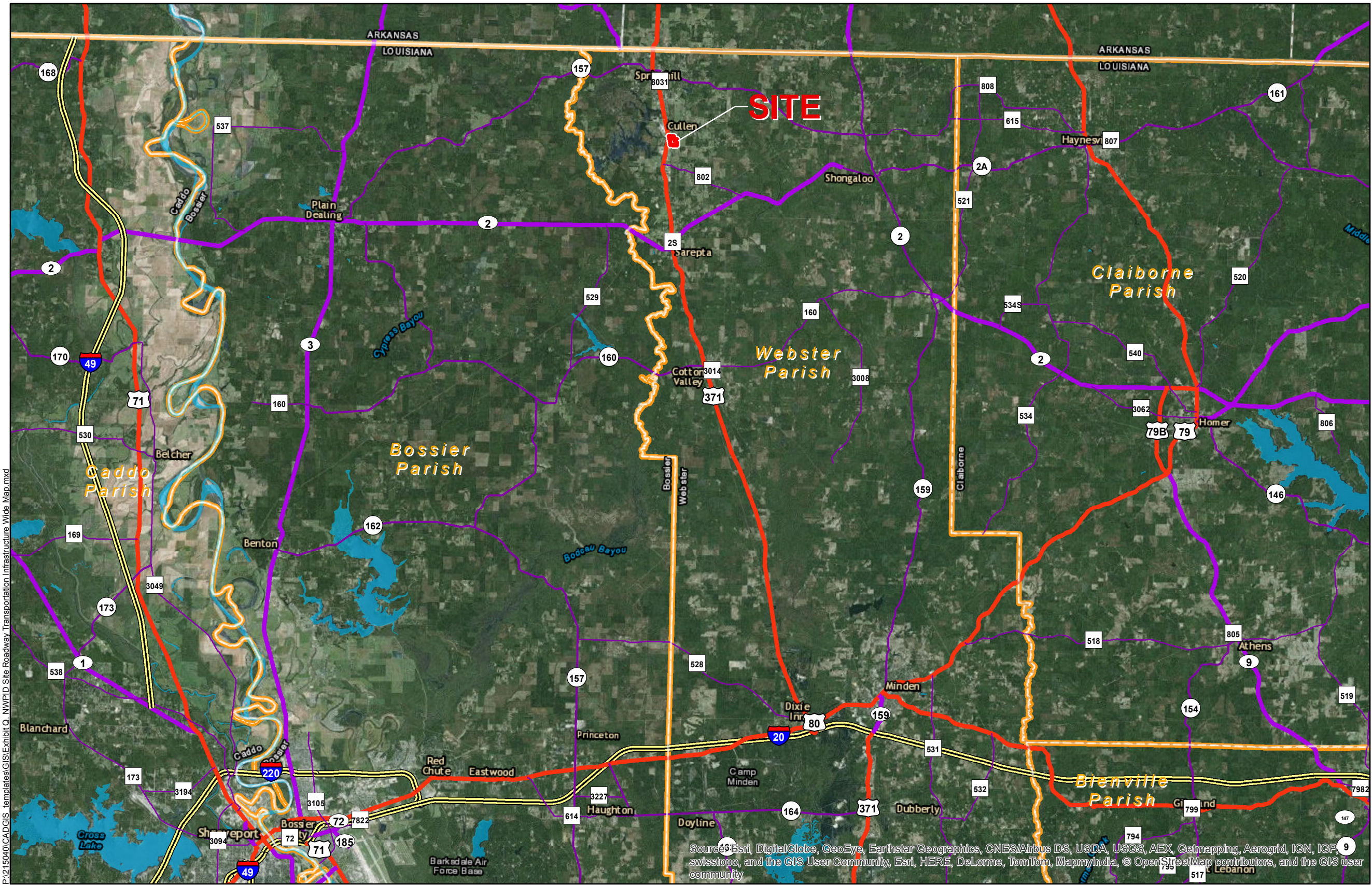
NWPID



Webster Parish

Legend

- Site Boundary (61.33 Acres +/-)
- Parish Boundary
- Existing Roadway
  - Interstate
  - US Highway
  - 4-Lane State Highway
  - Urban State Highway
  - Rural State Highway
- Waterbody



P:\215040\CAD\GIS templates\GIS\Exhibit Q. NWPID Site Roadway Transportation Infrastructure Wide Map.mxd

## General Notes:

1. No attempt has been made by CSRS, Inc. to verify site boundary, title, actual legal ownership, deed restrictions, servitudes, easements, or other burdens on the property, other than that furnished by the client or his representative.
2. Transportation data from 2013 TIGER datasets via U.S. Census Bureau at [ftp2.census.gov/geo/tiger/TIGER2013](http://ftp2.census.gov/geo/tiger/TIGER2013).

Sources: Esri, DigitalGlobe, GeoEye, Earthstar Geographics, CNES/Airbus DS, USDA, USGS, AEX, Getmapping, Aerogrid, IGN, IGP, swisstopo, and the GIS User Community, Esri, HERE, DeLorme, TomTom, MapmyIndia, © OpenStreetMap contributors, and the GIS user community



Scale 1:275,000  
0 2.5 5 Miles



NORTH WEBSTER PARISH  
INDUSTRIAL DISTRICT

Date:	10/5/2015
Project Number:	215040
Drawn By:	AMB
Checked By:	JAY

**CSRS**  
IMAGINE SHAPE DELIVER  
6767 Perkins Road Suite 200 Baton Rouge, LA 70808  
Telephone: 225 767-0546 Fax: 225 767-0060  
[www.csrsonline.com](http://www.csrsonline.com)