

Exhibit Q

Breaux Bridge I-10 Site

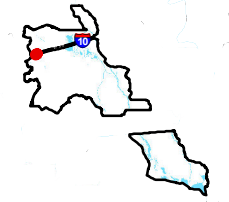
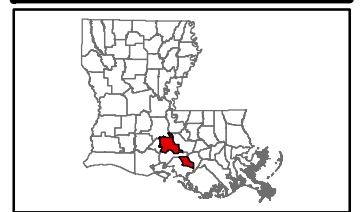
Local Product Pipelines Map



Breaux Bridge I-10 Site Local Product Pipelines Map

Breaux Bridge I-10 Site
St. Martin Parish, LA

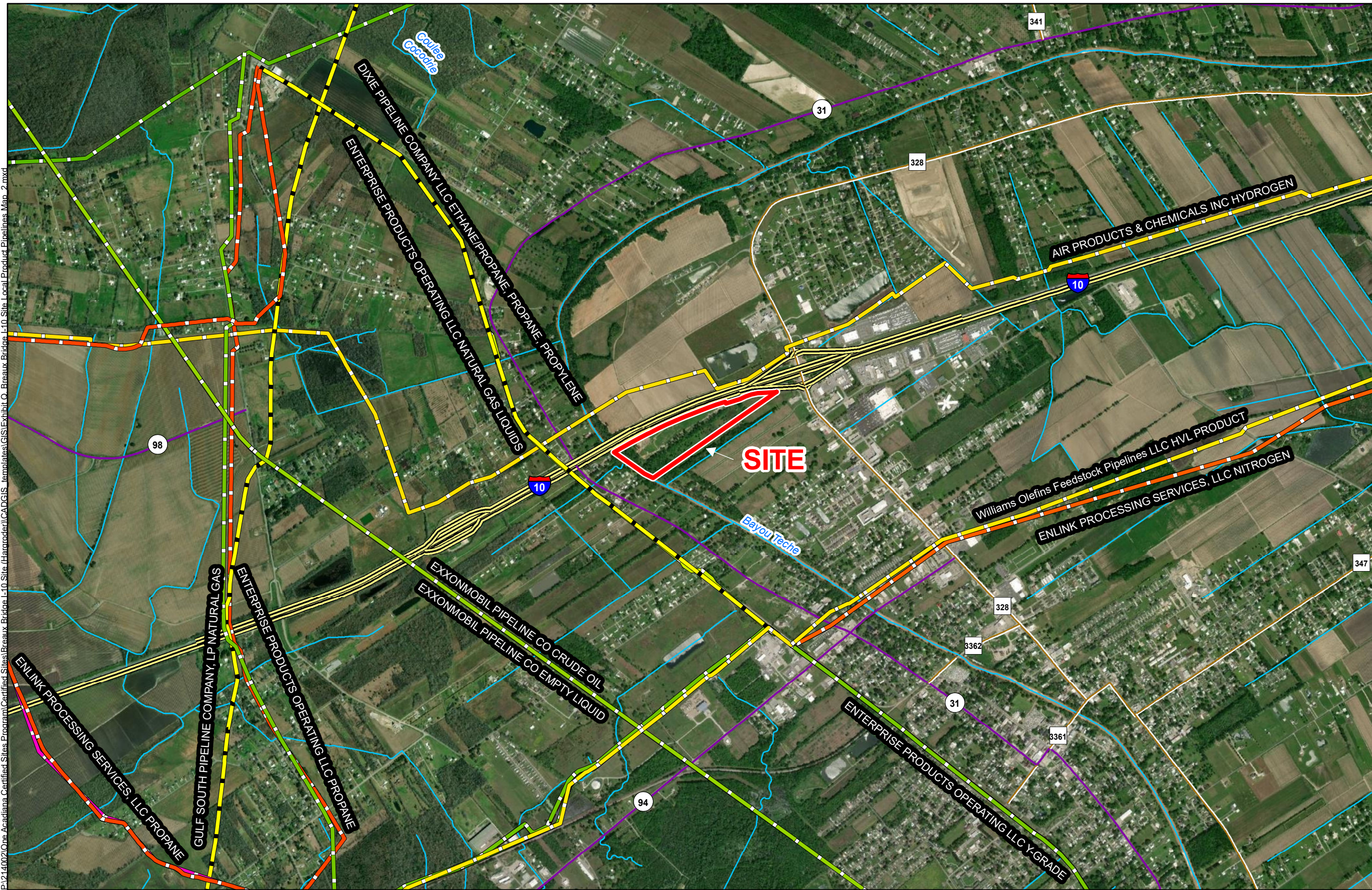
One Acadiana



St. Martin Parish

LEGEND

- Site Boundary (43± ac.)
- Stream
- National Pipeline Mapping System**
- BUTANE, ETHANE, ETHANE/PROPANE, ISOBUTANE, ISOBUTANE*
- BUTANE, ETHANE, ETHANE/PROPANE, PROPANE*
- BUTANE, ETHANE, ISOBUTANE, NATURAL GASO*
- BUTANE, ETHANE/PROPANE, ISOBUTANE, NATU*
- BUTANE, ETHANE/PROPANE, ISOBUTANE, PROP*
- BUTANE, ISOBUTANE, NAPHTHA, NATURAL GAS*
- BUTANE, ISOBUTANE, NATURAL GASOLINE, PR*
- BUTANE, ISOBUTANE, PROPANE
- CRUDE OIL
- EMPTY LIQUID
- ETHANE/PROPANE, PROPANE, PROPYLENE
- HVL PRODUCT
- HYDROGEN
- NATURAL GAS
- NATURAL GAS LIQUIDS
- NITROGEN
- OTHER HVLS
- PROPANE
- Y-GRADE
- Existing Roadway**
- Interstate
- Urban State Highway
- Rural State Highway



General Notes:
 1. No attempt has been made by CSRS, Inc. to verify site boundary, title, actual legal ownership, deed restrictions, servitudes, easements, or other burdens on the property, other than that furnished by the client or his representative.
 2. Transportation data from 2013 TIGER datasets via U.S. Census Bureau at <http://ftp2.census.gov/geo/tiger/TIGER2013>.
 3. Utility information from visual inspection and/or the individual utility operators. Exact field location has not been determined by survey. The lines shown are an approximate representation only and may have been offset for depiction purposes.
 4. 2015 aerial imagery from USDA-APFO National Agricultural Inventory Project (NAIP) and may not reflect current ground conditions.



Date: 11/16/2022
 Project Number: 214002
 Drawn By: BMS
 Checked By: EEB

