



# BILTÉN PARK

DISCOVER A DYNAMIC OPPORTUNITY  
OVER 6,000 ACRES NEXT DOOR TO NEW ORLEANS

## Bradley Cook

Tel: +1 985 898 2022  
Direct: +1 985 246 3720  
[bcCook@stirlingprop.com](mailto:bcCook@stirlingprop.com)

## Darin C. Gosda

Tel: +1 713 577 1759  
Cell: +1 713 249 2649  
[darin.gosda@cbre.com](mailto:darin.gosda@cbre.com)

## Bill Boyer

Tel: +1 713 881 0919  
Cell: +1 713 553 7393  
[bill.boyer@cbre.com](mailto:bill.boyer@cbre.com)





# B I L T E N   P A R K

DISCOVER A DYNAMIC OPPORTUNITY  
OVER 6,000 ACRES NEXT DOOR TO NEW ORLEANS

WITH OVER 6,000 CONTIGUOUS ACRES, BILTEN PARK IS LOUISIANA'S PREMIER SITE FOR FUTURE ADVANCED MANUFACTURING AND LOGISTICS, OFFERING:

- ACCESSIBILITY/PROXIMITY TO MAJOR MARKETS
- REGIONALLY UNMATCHED LABOR FORCE
- QUALITY EMPLOYER BASE
- SUPERIOR QUALITY OF LIFE

FURTHER, ST. TAMMANY PARISH STANDS AS A PRIME LOCATION FOR BUSINESS RELOCATION AND GROWTH. THE SCHOOL SYSTEMS LEAD THE STATE, AND COUPLED WITH REGIONAL HIGHER-EDUCATION PARTNERSHIPS WITH MAJOR CORPORATIONS AND THE INFLUX OF NEW CORPORATE HEADQUARTERS (SUCH AS SMOOTHIE KING AND DXC), BILTEN PARK IS PRIMED TO SUPPORT A DIVERSITY OF FUTURE USERS.

SITUATED BETWEEN TWO MAJOR NASA FACILITIES WITH SIGNIFICANT UTILITY, BILTEN IS PREPARED TO SUPPORT LOGISTICS AND TRANSPORTATION ENTERPRISES.

BILTEN'S LOCATION PRESENTS MOST, IF NOT THE CHARACTERISTICS THAT A QUALITY DEVELOPMENT PARK DEMANDS. LESS THAN 45 MILES FROM NEW ORLEANS' CENTRAL BUSINESS DISTRICT, AND BOASTING 3.5 LINEAR MILES OF FRONTAGE ALONG I-12, AND ITS CONNECTIVITY TO THREE INTERSTATE THOROUGHFARES (I-10, I-12, AND I-59) BILTEN FEASTURES EXCEPTIONALCONNECTIVITY TO MAJOR METROPOLITAN DESTINATIONS SUCH AS ATLANTA, KANSAS CITY AND HOUSTON, TO NAME A FEW. WITH BOTH DEEP AND SHALLOW DRAFTS, THE PORT OF NEW ORLEANS AND OTHER REGIONAL PORTS OPEN ACCESS TO WORLDWIDE SERVICE TO THE PARK. ADDITIONALLY, AS ONE OF THE FASTEST GROWING AIRPORTS IN THE NATION OFFERING OVER 150 DAILY FLIGHTS AND EIGHT INTERNATIONAL CONNECTIONS, THE LOUIS ARMSTRONG INTERNATIONAL AIRPORT IN NEW ORLEANS CREATES GLOBAL INTERMODAL CONNECTIVITY.



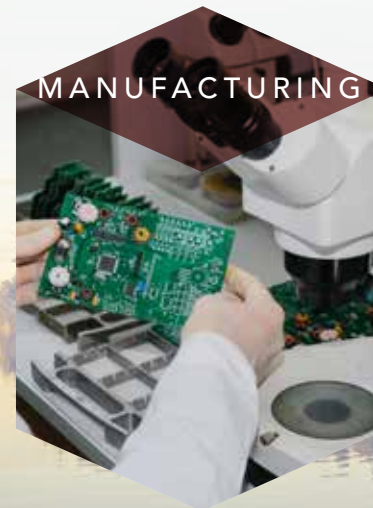
LAND



OFFICE  
PARK



LOGISTICS



MANUFACTURING

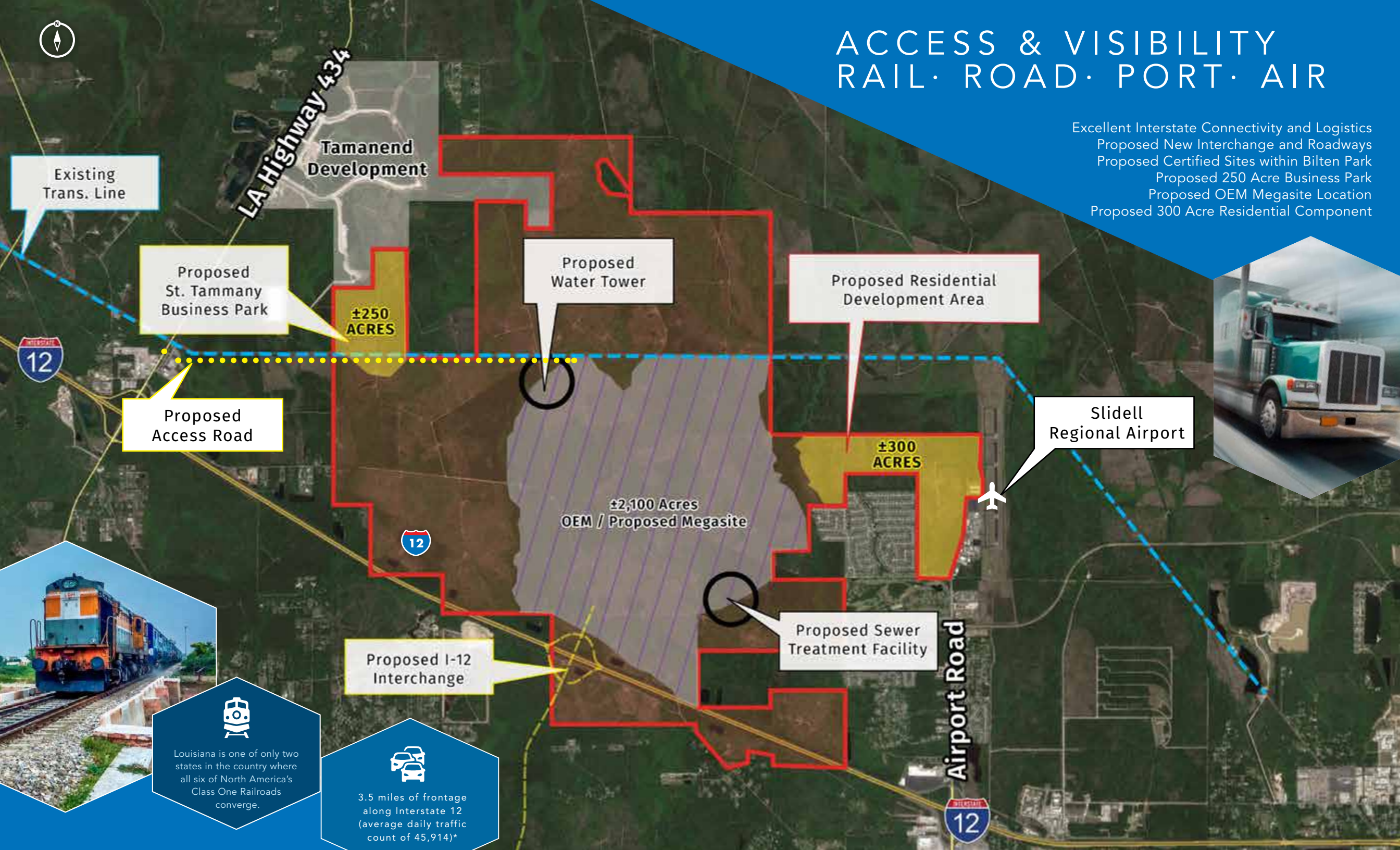
STIRLING  
PROPERTIES


CBRE




# ACCESS & VISIBILITY RAIL · ROAD · PORT · AIR

Excellent Interstate Connectivity and Logistics  
Proposed New Interchange and Roadways  
Proposed Certified Sites within Biltan Park  
Proposed 250 Acre Business Park  
Proposed OEM Megasite Location  
Proposed 300 Acre Residential Component



  
Louisiana is one of only two states in the country where all six of North America's Class One Railroads converge.

  
3.5 miles of frontage along Interstate 12 (average daily traffic count of 45,914)\*



# MULTI-MODAL CONNECTIVITY



Bilten Park is well situated for both inbound and outbound logistics.



- 42 Miles to Port of New Orleans
- 47 Miles to Port of Gulfport
- 50 Miles to New Orleans International Airport
- 67 Miles to Port of South Louisiana

## INTERSTATE CONNECTIVITY:

- New Orleans via I-10 (50 minutes)
- Houston via I-12/10 (5.25 hours)
- Memphis via I-55 (5.50 hours)
- Atlanta via I-65 (6.25 hours)
- Dallas via I-49/20 (7.50 hours)



NEW ORLEANS INTERNATIONAL AIRPORT  
NEW TERMINAL OPENING 2019



# ST. TAMMANY PARISH

## LOUISIANA

# HIGHLY SKILLED LABOR FORCE

St. Tammany's low business cost, nationally recognized school system, and first-rate medical facilities make the community a destination of choice for businesses of every size. As the fifth most populous parish in the state and one of the **FASTEST-GROWING PARISHES**, St. Tammany's upscale amenities, active community, and expansive green spaces offer wide-ranging, diverse opportunities for companies in any industry. The entire parish is renowned by outdoor enthusiasts, gourmands, golfers, and art-lovers for its versatility and charm.

As part of the Greater New Orleans Region —St. Tammany offers a healthy and cost-effective climate for conducting business. As part of Greater New Orleans, St. Tammany was named the **#1 MOST IMPROVED METRO** in the USA by Wall Street Journal, and in "Competitive Alternatives 2016," KPMG ranked Greater New Orleans #4 in its list of metro-areas with the **LOWEST BUSINESS COSTS IN THE SOUTHEAST**. Area Development magazine ranked Louisiana the **#5 TOP STATE FOR DOING BUSINESS**, the #2 top state in leading workforce development programs, and the **#2 TOP STATE IN BUSINESS INCENTIVE PROGRAMS**.

With a population of approximately 255,000 and a civilian labor force of over 126,000, St. Tammany offers a **HIGHLY-SKILLED, HIGHLY-TRAINED WORKFORCE** for businesses in any industry. The **NATIONALLY-RECOGNIZED** K-12 education system and world-renowned professional and technical schools produce dedicated new workers every year. Students' ACT scores consistently rank above the national average while the unemployment rate in St. Tammany consistently remains below the national average.

**STRONG  
ECONOMIC  
GROWTH**

NEW BUSINESS INC.

**40%**  
INCREASE

YEAR OVER YEAR

LOUISIANA

**5th  
LARGEST  
PARISHES**

AVERAGE

**1st**

INCOME IN  
LOUISIANA

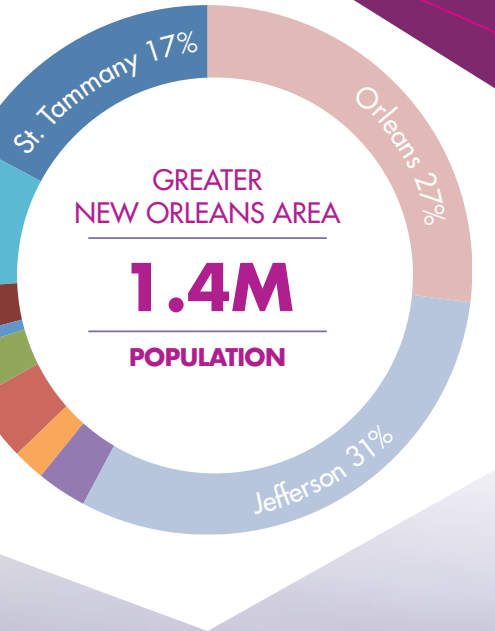
INCOME

**\$73K**

MEDIAN FAMILY

GREATER  
NEW ORLEANS AREA

**1.4M**  
POPULATION



- 89% of Residents have a High School Diploma or Higher
- 65% of Residents are of Working Age
- 62% of Residents have Attended at Least Some College
- 38% of Residents have Achieved Advanced Degrees and/or Certifications

Source: St. Tammany Economic Development Foundation, 2017

# ST. TAMMANY PARISH

## LOUISIANA

## TOP RANKED BUSINESS ENVIRONMENT

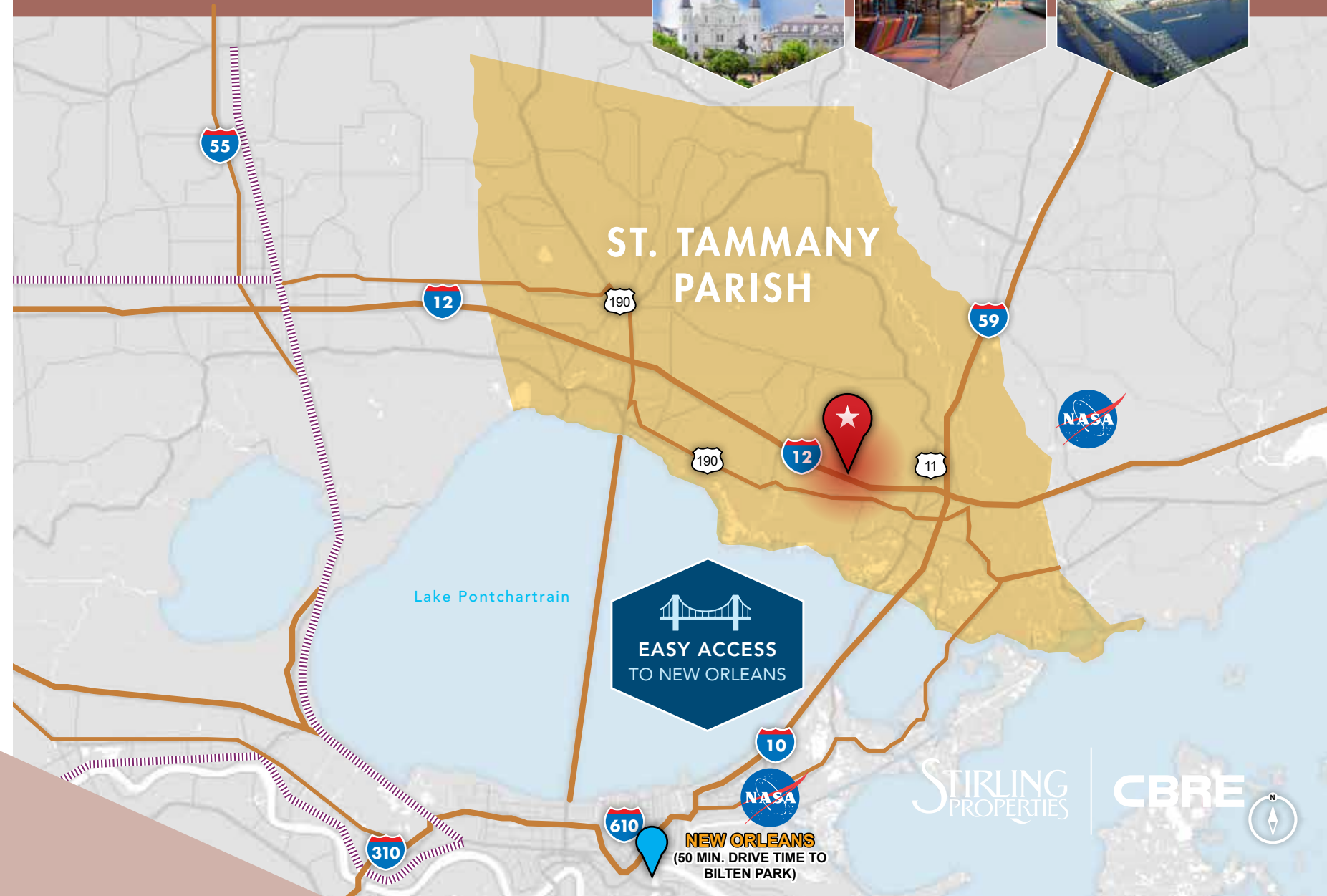
### BUSINESS FRIENDLY ENVIRONMENT

- #1 Major Market of the Year (tie)
- #1 IT Job Growth
- #1 Healthcare Job Growth
- #1 Best Business Conditions in the USA
- #2 Favorite City in America
- #2 Ranked Culture in the USA
- #3 in Population Growth \*among traditional cities in the USA
- #5 for Women in Tech
- #7 in North America for Connectivity

### MAJOR CORPORATIONS:

St. Tammany Parish and Greater New Orleans are Home to Many Major Corporations

- NASA
- Chevron
- Boeing
- DXC Technology
- Hornbeck Offshore Services
- Lockheed Martin
- PoolCorp
- Rain CII
- Zen-Noh Grain Corp.
- Textron
- Louisiana Offshore Oil
- Ochsner Health System
- St. Tammany Parish Hospital



STIRLING  
PROPERTIES

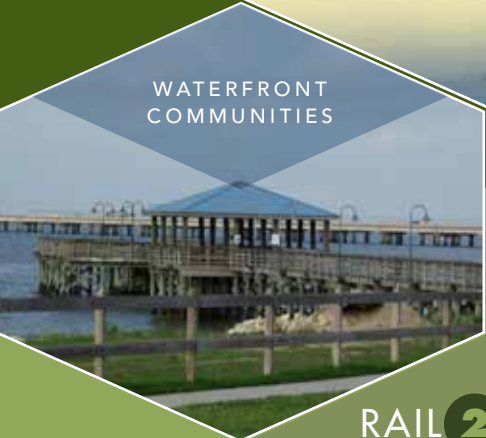
CBRE





# ST. TAMMANY PARISH

LOUISIANA



RAIL 2 TRAIL



CONNECTING THE COMMUNITIES OF  
COVINGTON, ABITA SPRINGS, MANDEVILLE, LACOMBE AND SLIDELL

THE TAMMANY TRACE

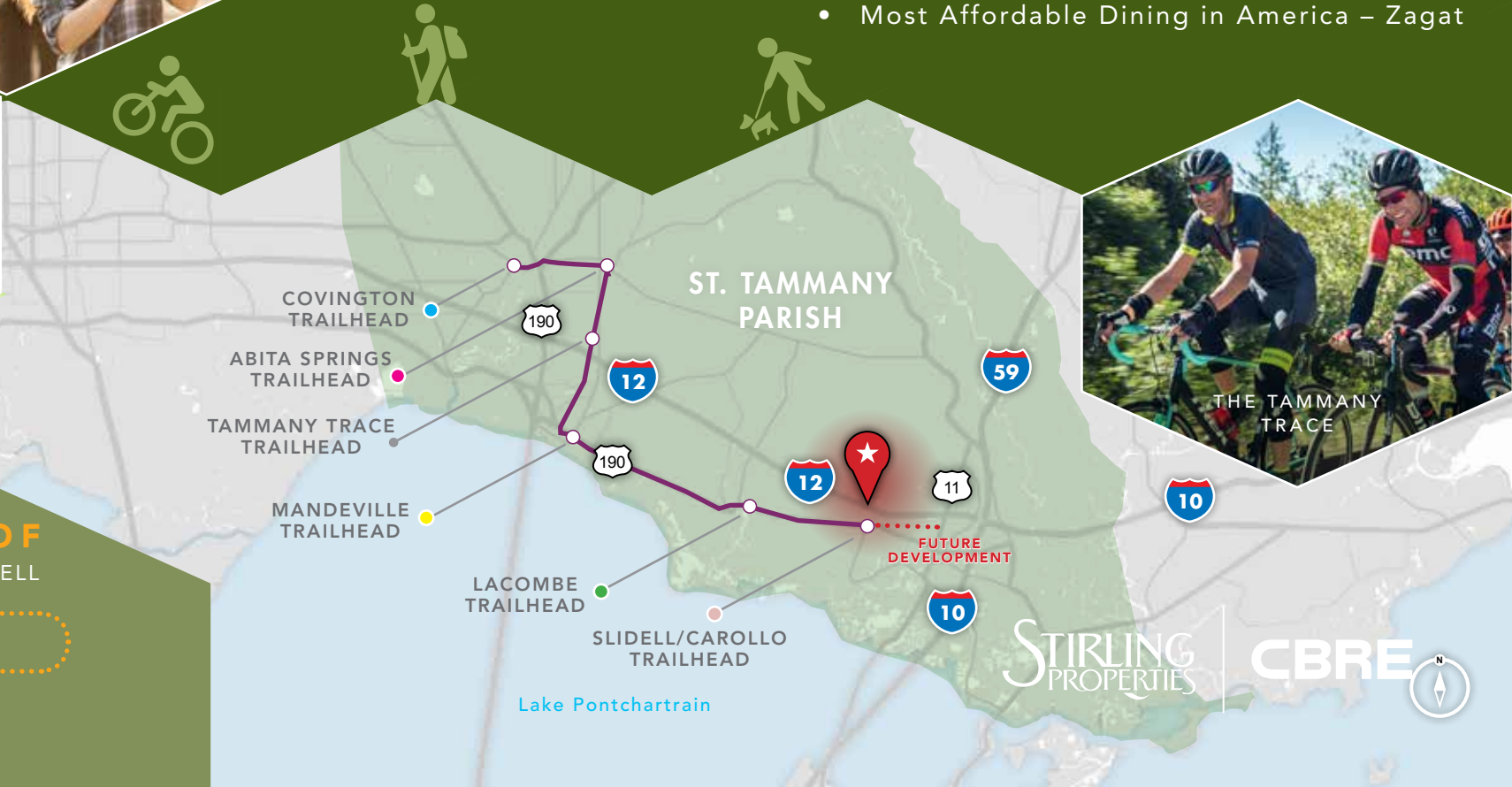
Louisiana's top-rated rail-to-trail converted from the historic Illinois Central Railroad corridor

# UNMATCHED QUALITY OF LIFE

St. Tammany Parish has always been an attractive and desirable location for those seeking the good life without sacrificing business success. The parish encompasses 854 square miles and its communities, include some of Louisiana's fastest growing cities such as Abita Springs, Covington, Lacombe, Madisonville, Mandeville, and Slidell.

In a world of increasing homogeneity, New Orleans shines as a beacon of culture. From music to cuisine to Mardi Gras, life in the Big Easy is rich and rewarding. Recent accolades include:

- #1 Nightlife Destination in the World – Travel & Leisure
  - #3 Most Joyous City in America – Shutterfly
  - Top Ten City for Relocation – Forbes
- Most Affordable Dining in America – Zagat





## B I L T E N   P A R K

### **Bradley Cook**

Tel: +1 985 898 2022  
Direct: +1 985 246 3720  
[bcook@stirlingprop.com](mailto:bcook@stirlingprop.com)

### **Darin C. Gosda**

Tel: +1 713 577 1759  
Cell: +1 713 249 2649  
[darin.gosda@cbre.com](mailto:darin.gosda@cbre.com)

### **Bill Boyer**

Tel: +1 713 881 0919  
Cell: + 713 553 7393  
[bill.boyer@cbre.com](mailto:bill.boyer@cbre.com)

© 2018 CBRE, Inc. This information has been obtained from sources believed reliable. We have not verified it and make no guarantee, warranty or representation about it. Any projections, opinions, assumptions or estimates used are for example only and do not represent the current or future performance of the property. You and your advisors should conduct a careful, independent investigation of the property to determine to your satisfaction the suitability of the property for your needs.

CBRE and the CBRE logo are service marks of CBRE, Inc. and/or its affiliated or related companies in the United States and other countries. All other marks displayed on this document are the property of their respective owners.

STIRLING  
PROPERTIES

**CBRE**