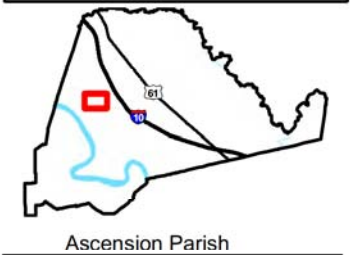


Exhibit H. Grezaffi South Site Potable Water Infrastructure Map

Existing Potable Water  
Grezaffi South Site  
Ascension Parish, LA



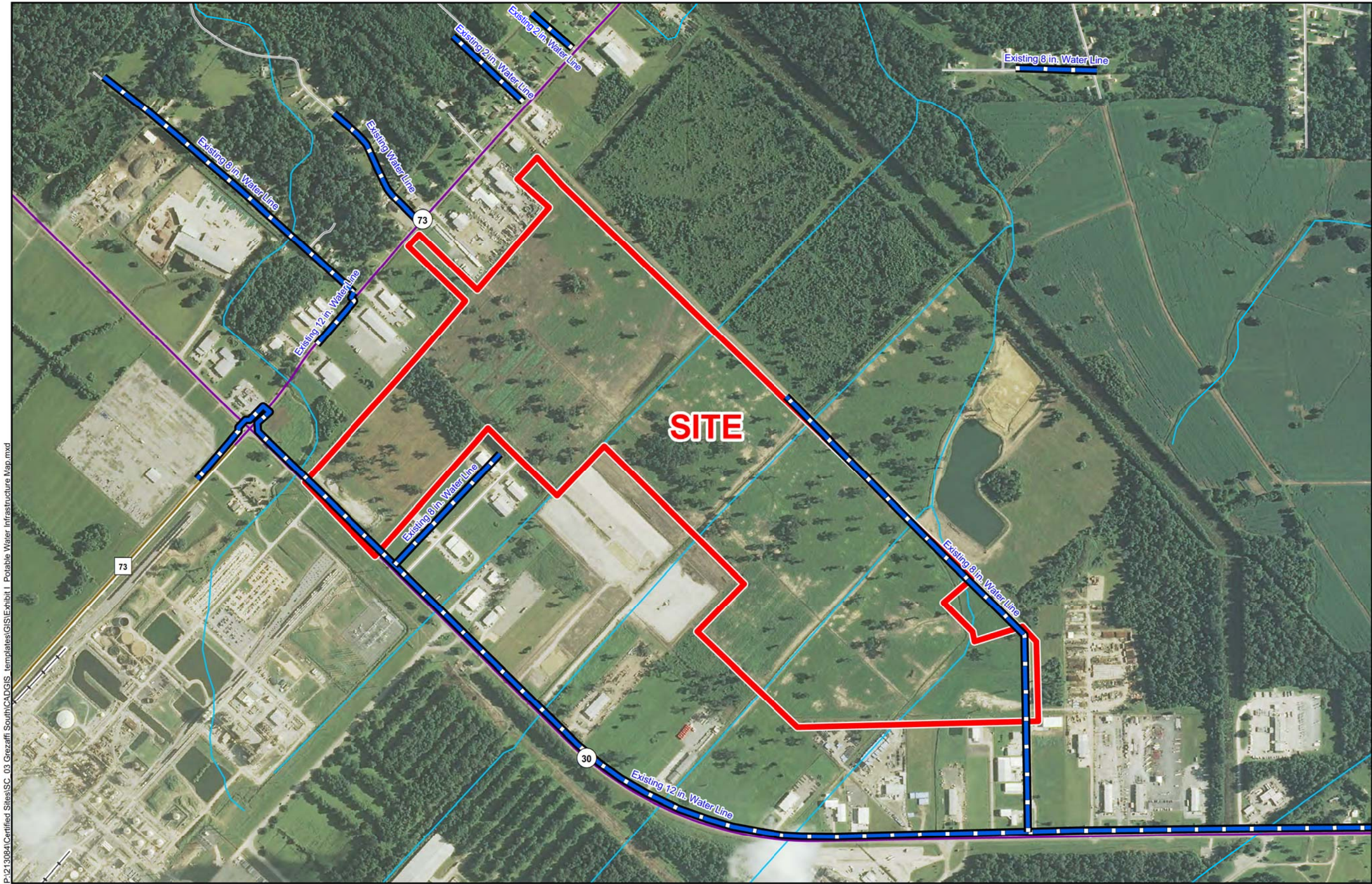
Ascension Parish

LEGEND

Site Boundary (212.87 Acres +/-)

Distribution Line

- Water
- Existing Roadway
- Urban State Highway
- Rural State Highway
- Local Roads
- Railroad
- Stream



P:\213084\Certified Sites\SC\_03 Grezaffi South\CAD\GIS templates\GIS\Exhibit I Potable Water Infrastructure Map.mxd

- General Notes:
1. No attempt has been made by CSRS, Inc. to verify site boundary, title, actual legal ownership, deed restrictions, servitudes, easements, or other burdens on the property, other than that furnished by the client or his representative.
  2. Transportation data from 2013 TIGER datasets via U.S. Census Bureau at <ftp://ftp2.census.gov/geo/tiger/TIGER2013>.
  3. Utility information from visual inspection and information provided by Baton Rouge Water. Exact field location has not been determined by survey. The lines shown are an approximate representation only and may have been offset for depiction purposes.
  4. 2013 aerial imagery from USDA-APFO National Agricultural Inventory Project (NAIP) and may not reflect current ground conditions.



Scale 1:9,600  
0 510 1,020 Feet



Date: 11/19/2014  
Project Number: 213084.20.002  
Drawn By: MAT  
Checked By: TMG

**CSRS**  
IMAGINE SHAPE DELIVER  
6767 Perkins Road Suite 200 Baton Rouge, LA 70808  
Telephone: 225 769-0546 Fax: 225 767-0060  
[www.csrsline.com](http://www.csrsline.com)