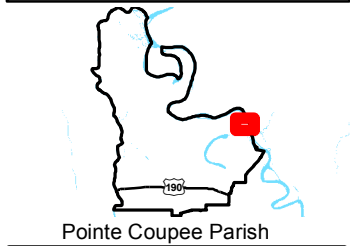
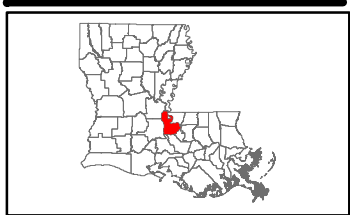


Exhibit L. Moseley North Site Electrical Transmission Infrastructure Map

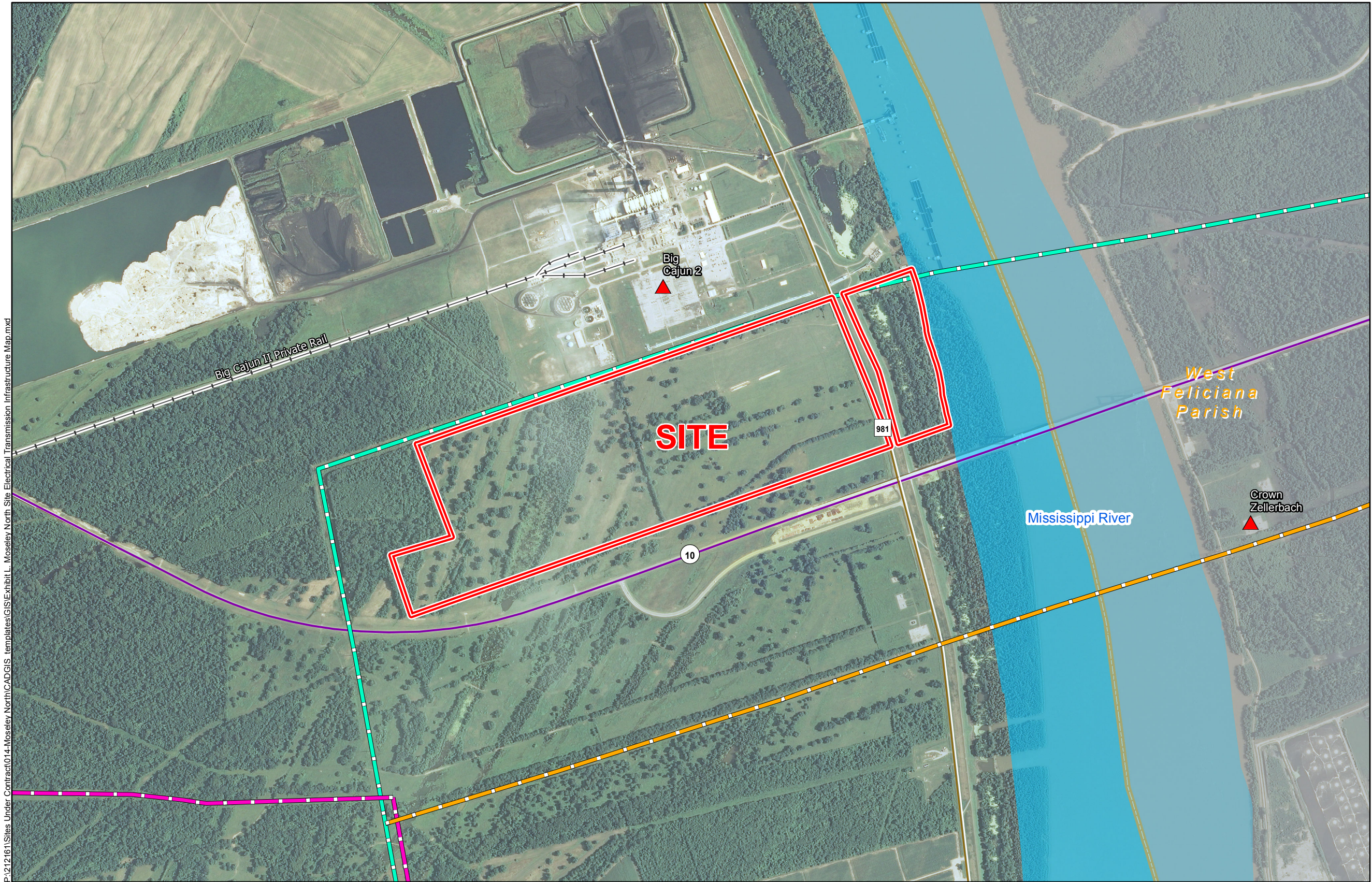
Existing Electric Transmission
Moseley North Site
Pointe Coupee Parish, LA

BRAC



LEGEND

- Site Boundary (304.24 Acres +/-)
- Existing Electric Transmission
 - Entergy: 230 kV
 - Entergy: 500 kV
 - PCEMC: 69 kV
- Substation
- Existing Roadway
 - Urban State Highway
 - Rural State Highway
 - Railroad
- Waterbody
- Parish Boundary



P:\212161\Sites Under Contract\014 Moseley North\CAD\GIS templates\GIS\Exhibit L. Moseley North Site Electrical Transmission Infrastructure Map.mxd

General Notes:

1. No attempt has been made by CSRS, Inc. to verify site boundary, title, actual legal ownership, deed restrictions, servitudes, easements, or other burdens on the property, other than that furnished by the client or his representative.
2. Transportation data from 2013 TIGER datasets via U.S. Census Bureau at ftp2.census.gov/geo/tiger/TIGER2013.
3. Utility information from visual inspection and/or the individual utility operators. Exact field location has not been determined by survey. The lines shown are an approximate representation only and may have been offset for depiction purposes.
4. 2013 aerial imagery from USDA-APFO National Agricultural Inventory Project (NAIP) and may not reflect current ground conditions.



Scale 1:15,000
0 800 1,600 Feet



Date: 8/10/2015
Project Number: 212161.20.014
Drawn By: MAT
Checked By: TMG

