

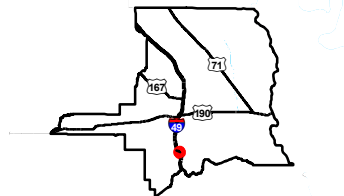
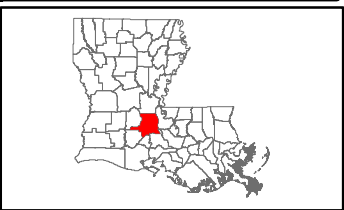
Exhibit M. Blue Andrus Property Electrical Transmission Infrastructure Map



Blue Andrus Property Electrical Transmission Infrastructure Map

Blue Andrus Property
St. Landry Parish, LA

One Acadiana



St. Landry Parish

LEGEND

- Site Boundary
- Electrical Transmission Lines
 - 500 kV
 - 138 kV
 - 69 kV
- Substation
- Existing Roadway
 - Interstate
 - Urban State Highway
 - Rural State Highway
 - Local Roads
- Cities

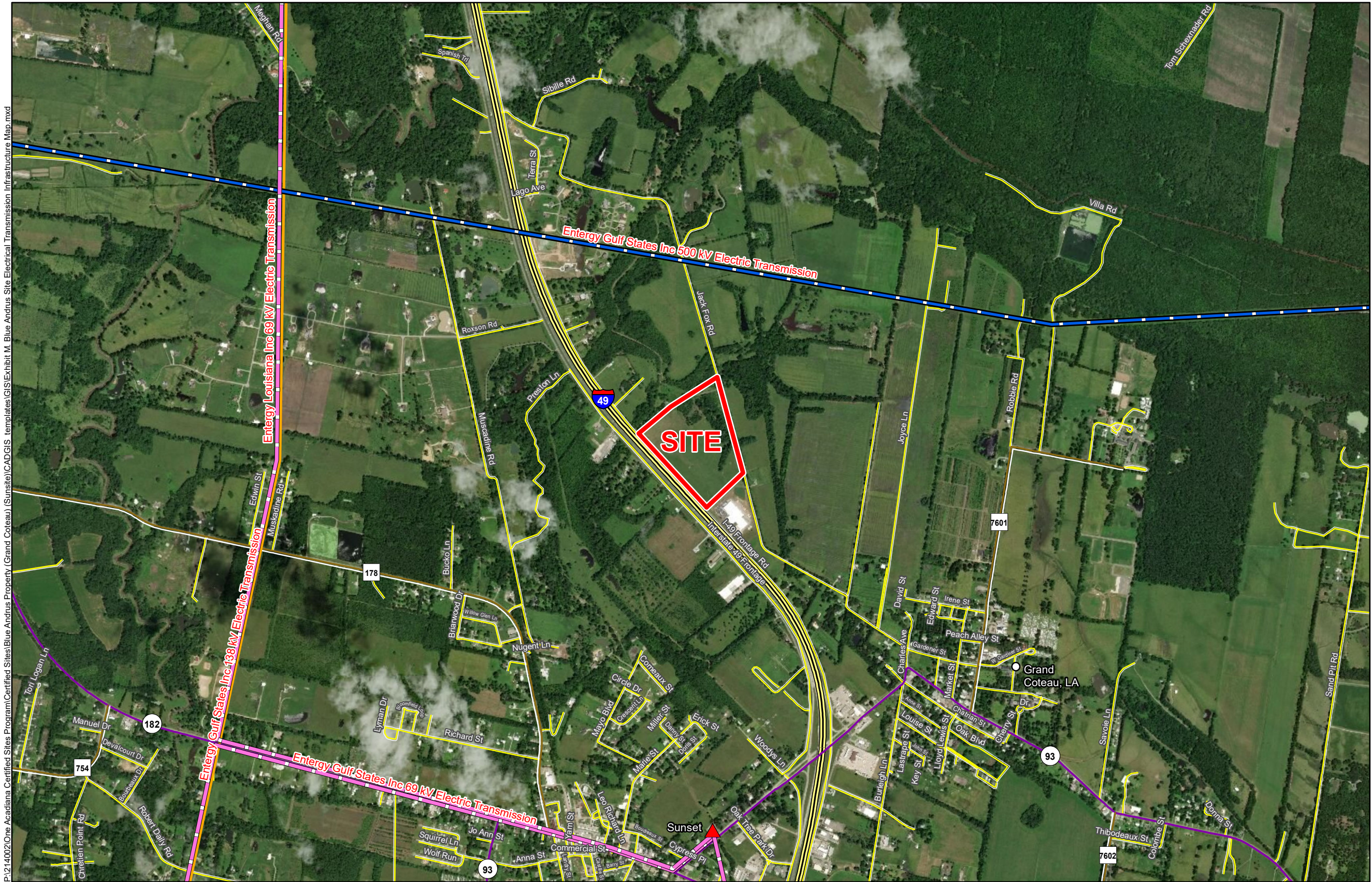


Date:	8/2/2018
Project Number:	214002
Drawn By:	DWC
Checked By:	TMK



6767 Perkins Road Suite 200 Baton Rouge, LA 70808
Telephone: 225 769-0546 Fax: 225 767-0060
www.csrsone.com

P:\214002\One Acadiana Certified Sites\Blue Andrus Property (Grand Coteau) (Sunset)\CADGIS templates\GIS\Exhibit M Blue Andrus Site Electrical Transmission Infrastructure Map.mxd



General Notes:

1. No attempt has been made by CSRS, Inc. to verify site boundary, title, actual legal ownership, deed restrictions, servitudes, easements, or other burdens on the property, other than that furnished by the client or his representative.
2. Transportation data from 2013 TIGER datasets via U.S. Census Bureau at <ftp://ftp2.census.gov/geo/tiger/TIGER2013>.
3. Utility information from visual inspection and/or the individual utility operators. Exact field location has not been determined by survey. The lines shown are an approximate representation only and may have been offset for depiction purposes.
4. 2015 aerial imagery from USDA-APFO National Agricultural Inventory Project (NAIP) and may not reflect current ground conditions.



Scale 1:20,000
0 1,000 2,000 Feet