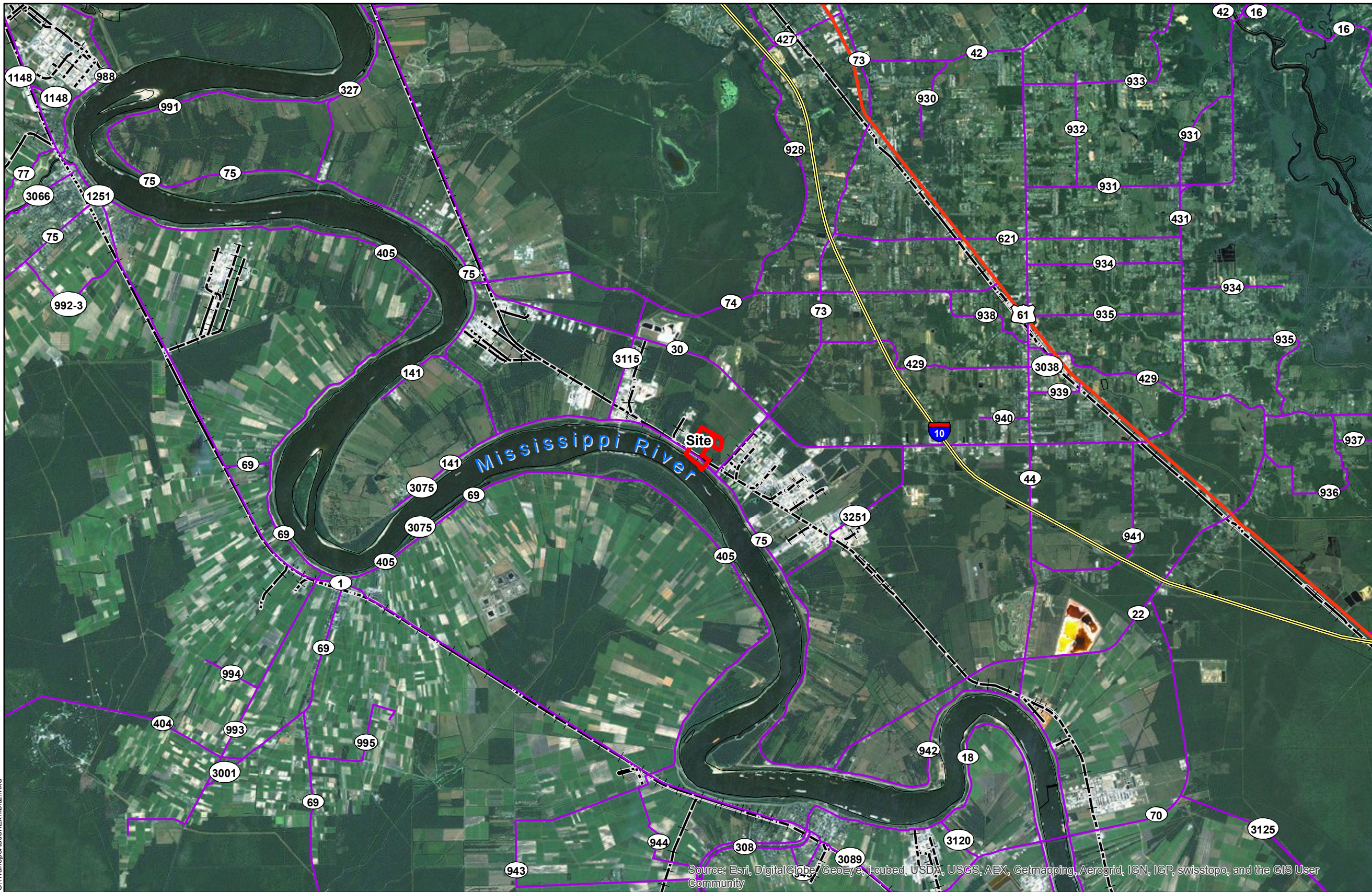


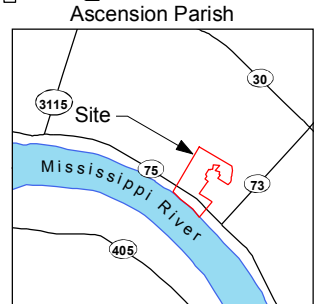
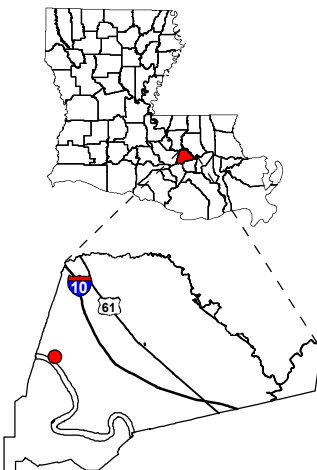
Exhibit V. Waterloo Site Roadway Transportation Infrastructure Wide Map



Project:
**Site Exhibit for
Barber Brothers
Ascension Parish, LA**

Client:

BRAC



0 6,000 12,000 Feet

Legend

- Site Boundary (155.88± Ac.)
- Railroad
- Interstate Highway
- U.S. Highway
- State Highway

Baton Rouge Area Chamber.

Source:
GIS features acquired from public domain state and federal data sources (LDOTD, GNIS, LOSCO, US Census Bureau).

Date:	8/30/2013
Project Number:	212161.20.006
Drawn By:	JES
Checked By:	TMG

CSRS
IMAGINE SHAPE DELIVER
6767 Perkins Road Suite 200 Baton Rouge, LA 70808
Telephone: 225 769-0546 Fax: 225 767-0060
www.csrsonline.com

General Notes:

1. No attempt has been made by CSRS, Inc. to verify title, actual legal ownership, deed restrictions, servitudes, easements, or other burdens on the property, other than that furnished by the client or his representative.
2. Railroad and Highway data obtained from LDOTD datasets via Atlas: The Louisiana Statewide GIS at <http://atlas.lsu.edu>.



0 6,900 13,800 Feet