



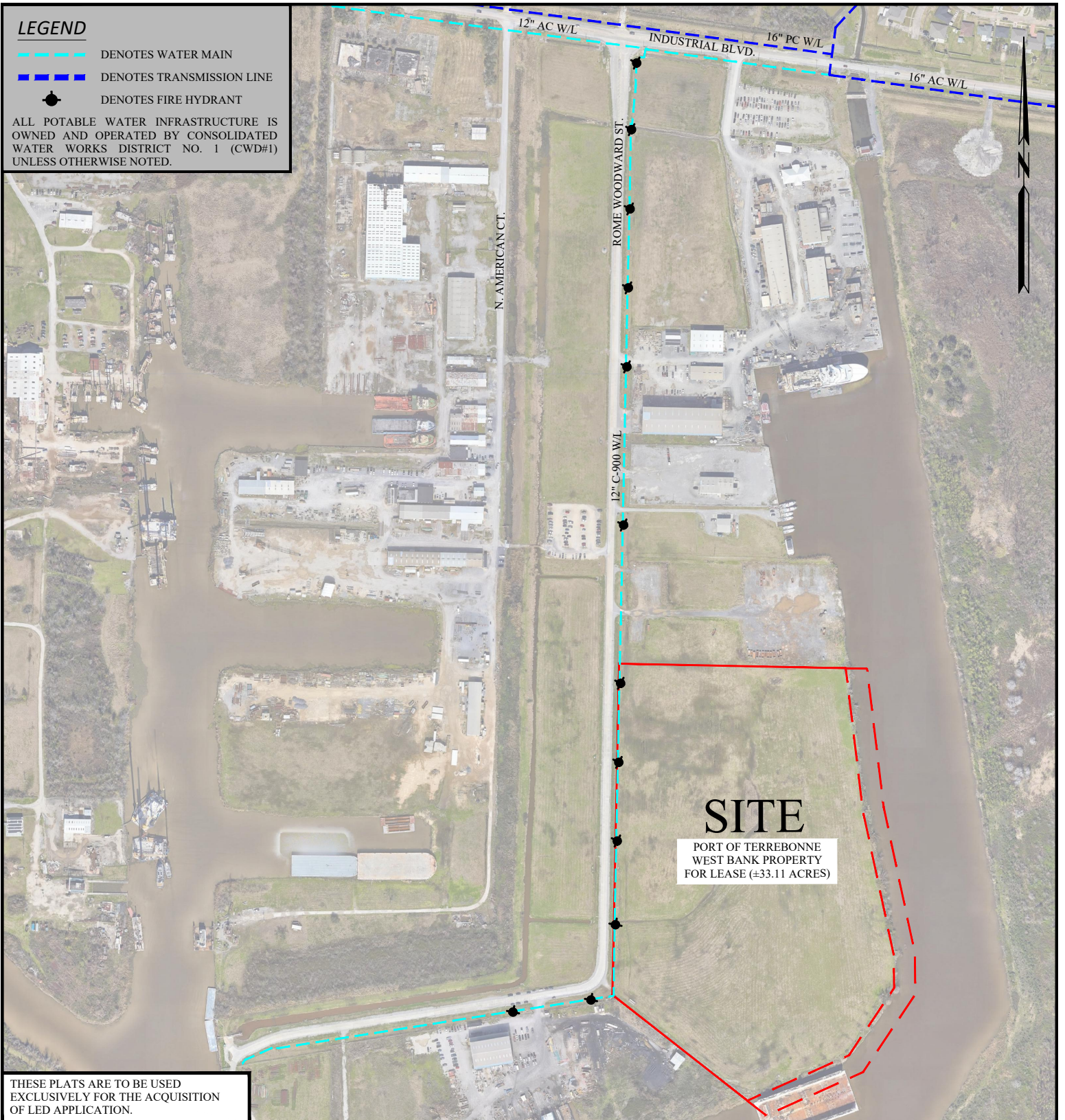
## Port of Terrebonne - West Bank

### Exhibit 14 – Potable Water Infrastructure Map

**LEGEND**

- - - DENOTES WATER MAIN
- - - DENOTES TRANSMISSION LINE
- DENOTES FIRE HYDRANT

ALL POTABLE WATER INFRASTRUCTURE IS OWNED AND OPERATED BY CONSOLIDATED WATER WORKS DISTRICT NO. 1 (CWD#1) UNLESS OTHERWISE NOTED.



THESE PLATS ARE TO BE USED EXCLUSIVELY FOR THE ACQUISITION OF LED APPLICATION.



**DELTA COAST CONSULTANTS, LLC**  
 631 S. HOLLYWOOD RD.  
 HOUMA, LA 70360

PHONE: 985-655-3100

[www.deltacoastllc.com](http://www.deltacoastllc.com)

SCALE: 1" = 500'



**Potable Water Infrastructure Map**

**PORT OF TERREBONNE**

LED CERTIFICATION APPLICATION FOR PORT OF TERREBONNE - WEST BANK TERREBONNE PARISH, LA

FILE: P:\2023\2023.083\DWG\LED PERMIT\PERMIT DWG\A_EXHIBIT_UTILITIES INFRASTRUCTURE.DWG	DATE 10/30/2024	PROJECT 2023.083	REVISION NO. 00	DESIGNED BY	DRAWN BY EMV	CHECKED BY MEB	SHEET NO. X
---	--------------------	---------------------	--------------------	-------------	-----------------	-------------------	----------------