

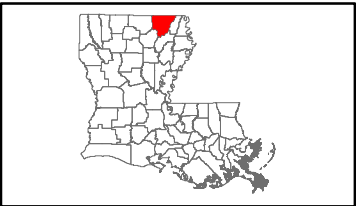


## Exhibit T. Bastrop IP Mill Site Roadway Transportation Infrastructure Wide Map

# Bastrop IP Mill Site Roadway Transportation Infrastructure Wide Map

Bastrop IP Mill Site  
Morehouse Parish, LA

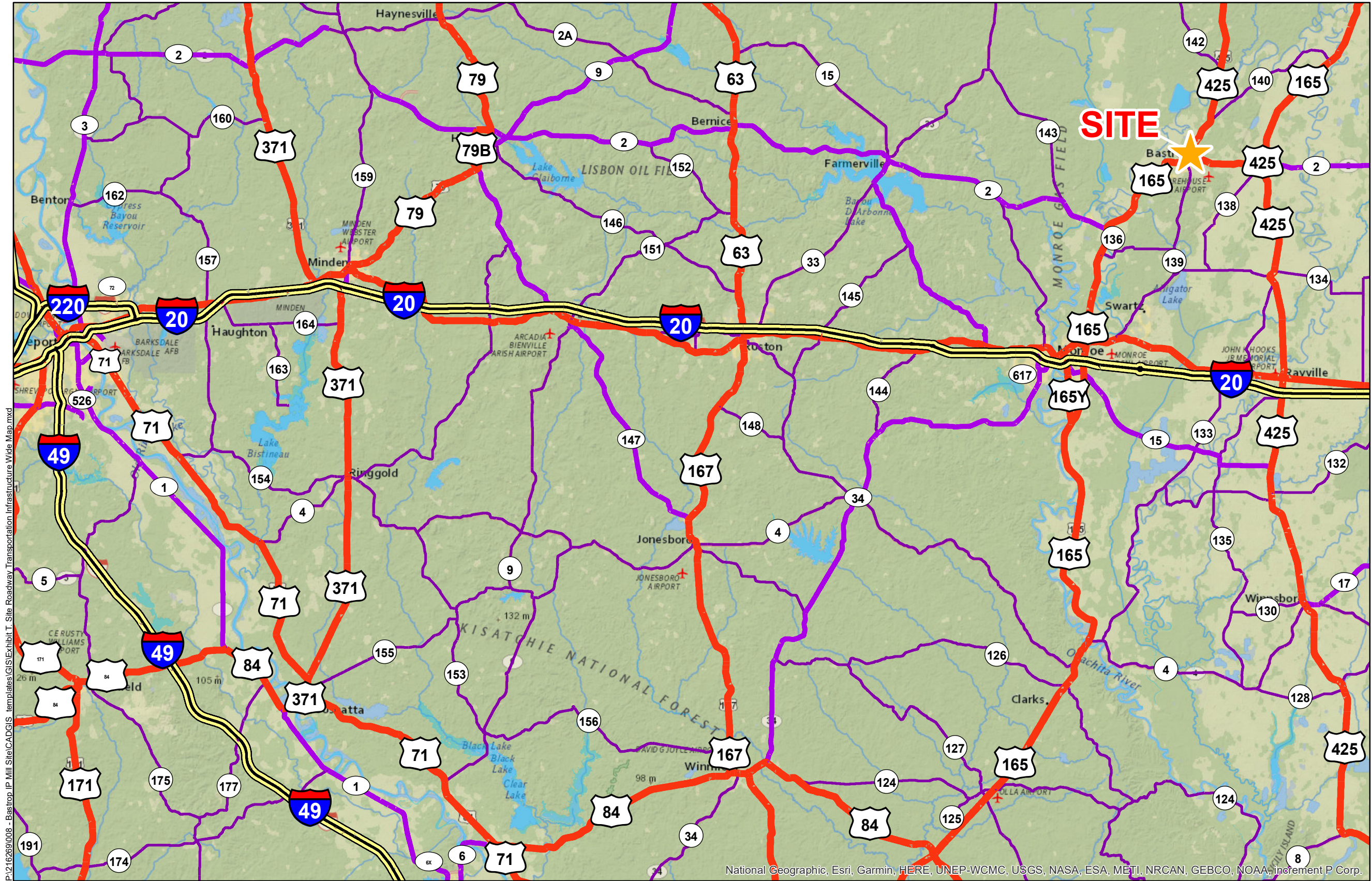
NELEA



Morehouse Parish

LEGEND

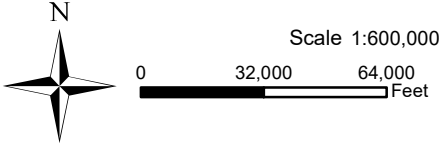
- Site Boundary
- Existing Roadway
  - Interstate
  - US Highway
  - 4-Lane State Highway
  - Urban State Highway
- Waterbody



National Geographic, Esri, Garmin, HERE, UNEP-WCMC, USGS, NASA, ESA, METI, NRCAN, GEBCO, NOAA, increment P Corp.

P:\216269\008 - Bastrop IP Mill Site\CAD\GIS - templates\GIS\Exhibit T. Site Roadway Transportation Infrastructure Wide Map.mxd

- General Notes:
1. No attempt has been made by CSRS, Inc. to verify site boundary, title, actual legal ownership, deed restrictions, servitudes, easements, or other burdens on the property, other than that furnished by the client or his representative.
  2. Transportation data from 2013 TIGER datasets via U.S. Census Bureau at [ftp2.census.gov/geo/tiger/TIGER2013](http://ftp2.census.gov/geo/tiger/TIGER2013).
  3. 2015 aerial imagery from ESRI Online Basemaps and may not reflect current ground conditions.



Date:	8/21/2019
Project Number:	216269
Drawn By:	BNF
Checked By:	DWC

