

# Exhibit CC.

## Syngenta Site

### All Utilities Infrastructure

### Site Map



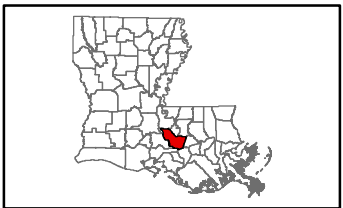
Baton Rouge Area Chamber®



# Syngenta Site All Utilities Infrastructure Site Map

Syngenta Site  
Iberville Parish, LA

BRAC



Iberville Parish

## LEGEND

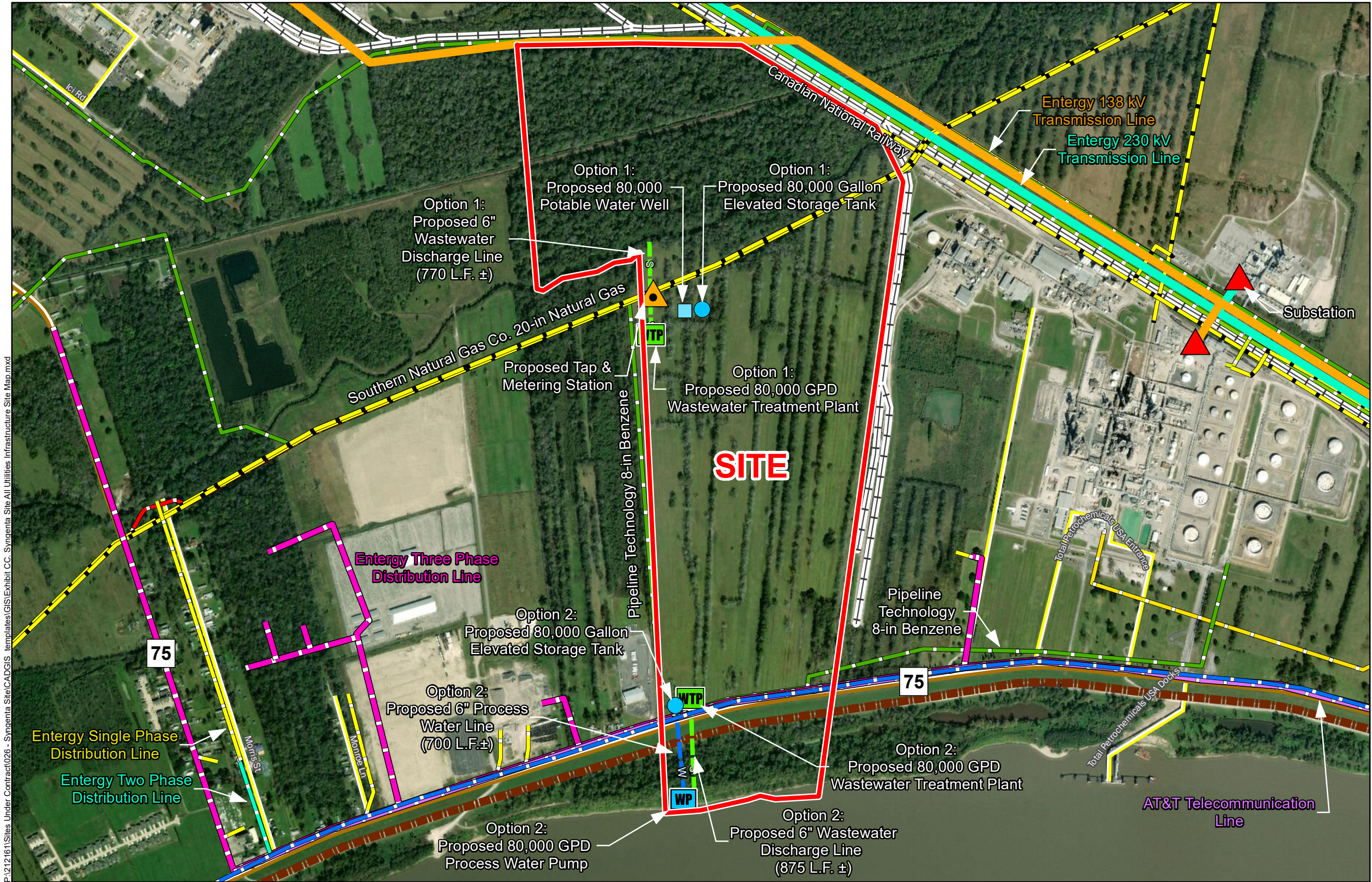
- Site Boundary (358.77 Ac. ±)
- Levee
- Existing 6" Iberville Parish Potable Water Line
- Entergy 138 kV Transmission Line
- Entergy 230 kV Transmission Line
- Entergy Single Phase Electrical Line
- Entergy Two Phase Electrical Line
- Entergy Three Phase Electrical Line
- AT&T Telecommunication Lines
- Existing Roadway
  - Rural State Highway
  - Local Roads
  - Railroad

## National Pipeline Mapping System Pipelines

- BENZENE
- BUTANE - ISO
- BUTYLENE
- ETHYLENE
- HYDROGEN
- NATURAL GAS
- PROPANE
- Y-GRADE



Date: 5/12/2020  
Project Number: 212161  
Drawn By: EEB  
Checked By: TMG



## General Notes:

1. No attempt has been made by CSRS, Inc. to verify site boundary, title, actual legal ownership, deed restrictions, servitudes, easements, or other burdens on the property, other than that furnished by the client or his representative.
2. Transportation data from 2013 TIGER datasets via U.S. Census Bureau at <http://ftp2.census.gov/geo/tiger/TIGER2013>.
3. Utility information from visual inspection and/or the individual utility operators. Exact field location has not been determined by survey. The lines shown are an approximate representation only and may have been offset for depiction purposes.
4. 2015 aerial imagery from USDA-APFO National Agricultural Inventory Project (NAIP) and may not reflect current ground conditions.



Scale 1:11,000  
0 600 1,200 Feet

CSRS