

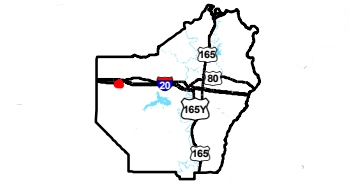
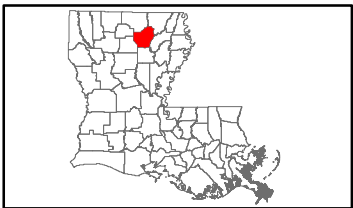
Exhibit V. Calhoun Technology Park - South Site Soils Conservation Service Map



Calhoun Technology Park - South Site Soils Conservation Service Map

Calhoun Technology
Park - South Site
Ouachita Parish, LA

NLEP



Ouachita Parish

LEGEND

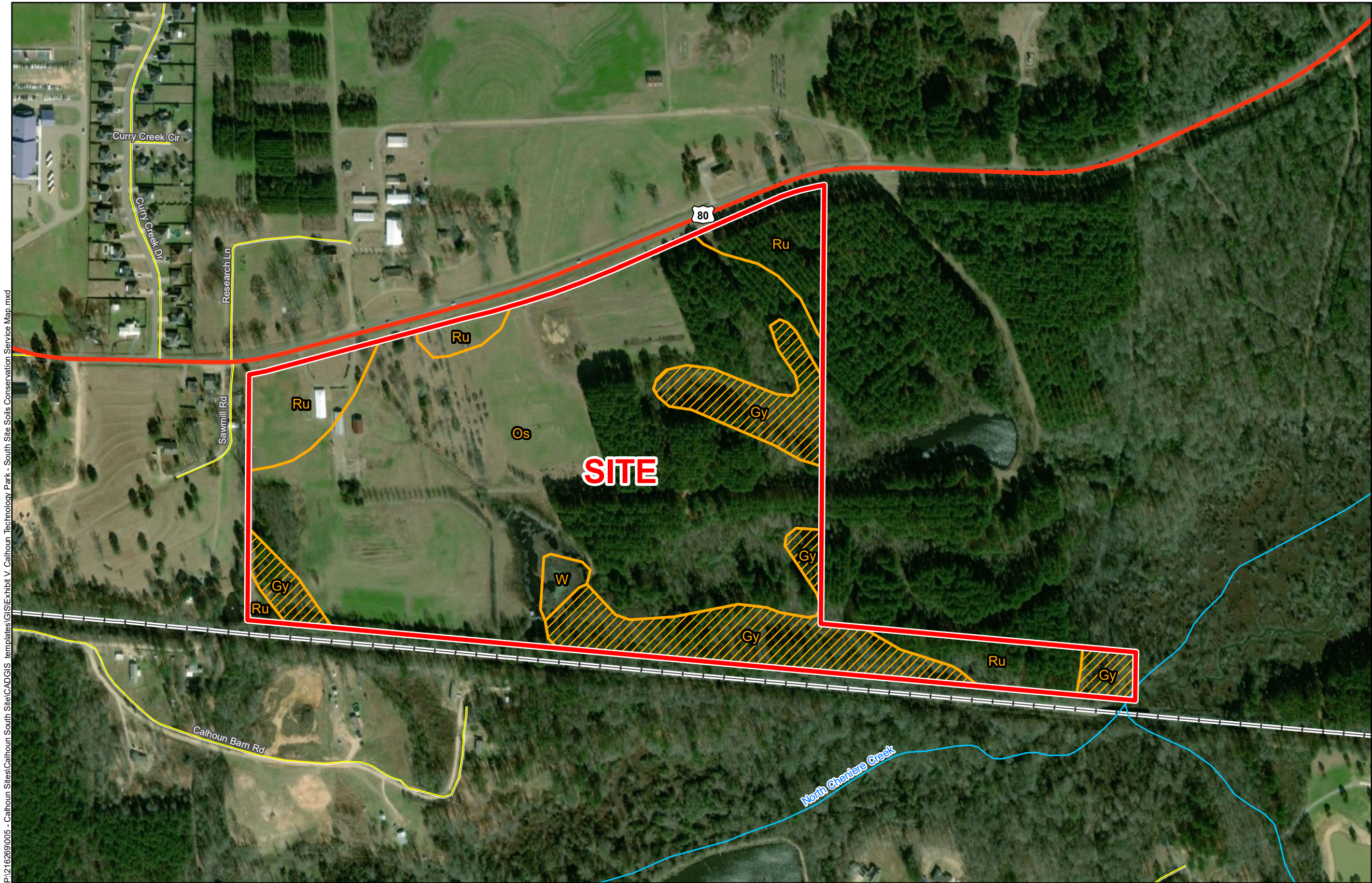
Site Boundary

Soil Type

- Gy - Guyton-Rosebloom complex, frequently flooded (80% hydric)
- Os - Ora-Savannah association, gently rolling (0% hydric)
- Ru - Ruston-Lucy association, undulating (0% hydric)
- W - Water

Existing Roadway

- US Highway
- Local Roads
- Railroad
- Stream or River



General Notes:

1. No attempt has been made by CSRS, Inc. to verify site boundary, title, actual legal ownership, deed restrictions, servitudes, easements, or other burdens on the property, other than that furnished by the client or his representative.
2. Transportation data from 2013 TIGER datasets via U.S. Census Bureau at <ftp://ftp2.census.gov/geo/tiger/TIGER2013>.
3. Soils data from USDA SSURGO website: <http://websoilsurvey.sc.egov.usda.gov/App/WebSoilSurvey.aspx>.
4. 2015 aerial imagery from USDA-APFO National Agricultural Inventory Project (NAIP) and may not reflect current ground conditions.



Scale 1:5,000
0 260 520 Feet

north louisiana
economic partnership

Date: 8/6/2018
Project Number: 216269
Drawn By: DWC
Checked By: TMK

CSRS
IMAGINE SHAPE DELIVER
6767 Perkins Road Suite 200 Baton Rouge, LA 70808
Telephone: 225 769-0546 Fax: 225 767-0060
www.csrsonline.com