

Exhibit II.

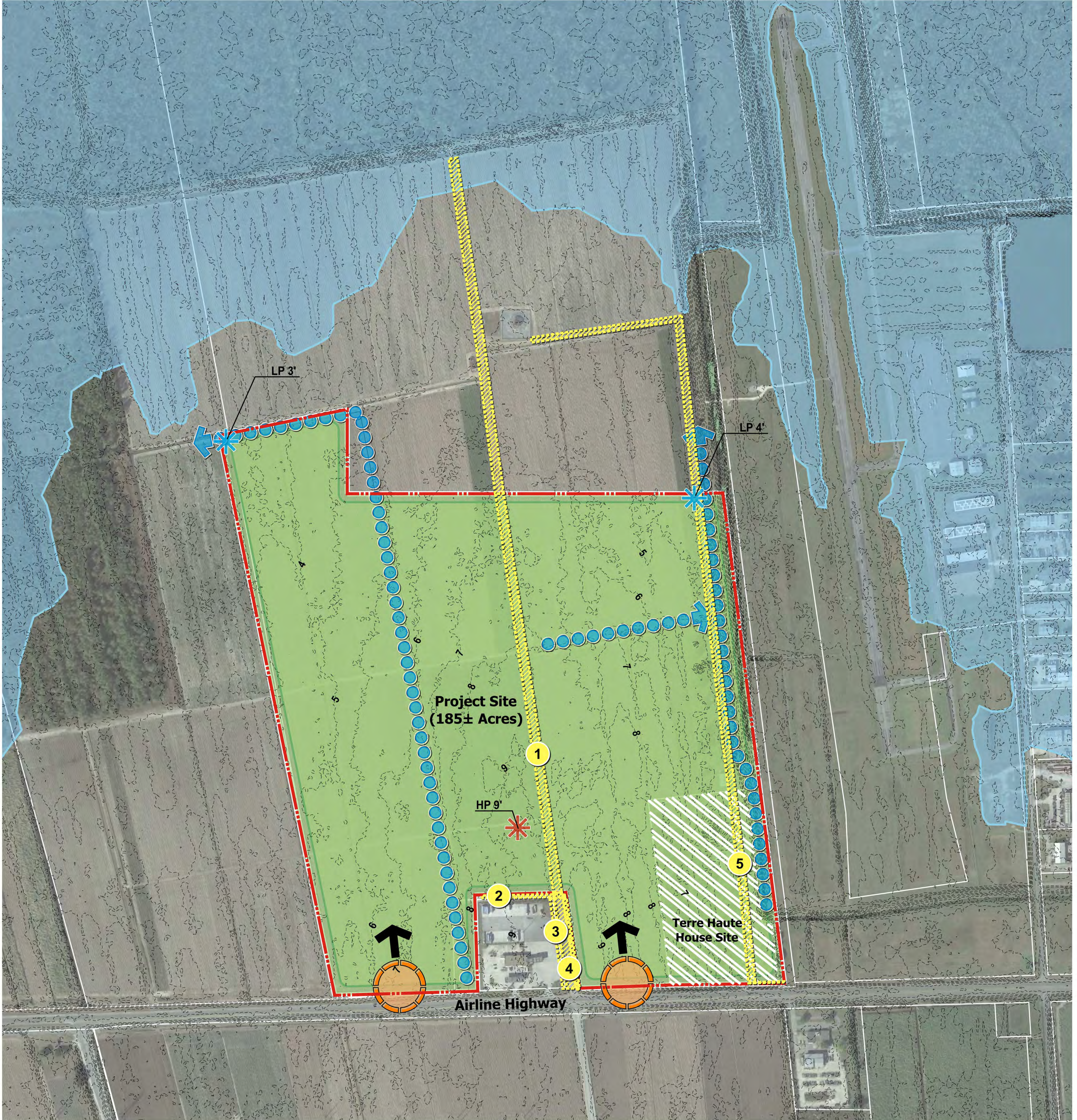
Terre Haute Development

Developable Area Exhibit



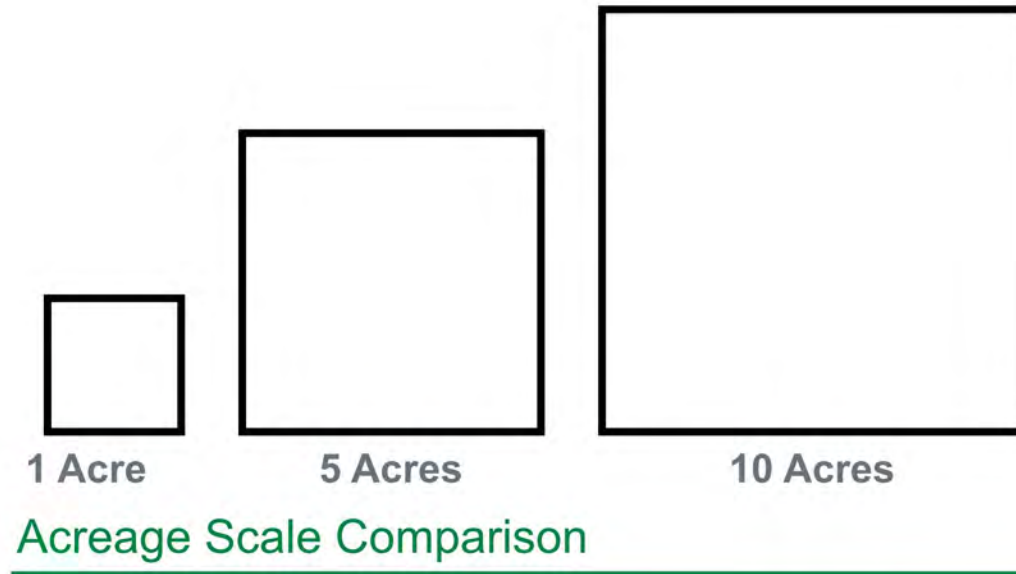
GREATER NEW ORLEANS
INC
REGIONAL ECONOMIC DEVELOPMENT

DEVELOPABLE AREA



Legend

- Site Boundary (185± Acres)
- St. John the Baptist Parish Parcel Data
- LiDAR Contour Data
- Existing Easement or Right-of-way
- Potential Non-Jurisdictional Drainage Ways
- Terre Haute House Site
- Developable Area
- 100-Year Flood Plain (Zone AE)
- Proposed Roadway Access Connection



Right of Way Index	
1	50' Wide 'Non Exclusive' Access Road Right-of-Way
2	10' Wide Entergy Utility Line Right-of-Way
3	15' Wide Entergy Utility Line Right-of-Way
4	100' Wide Access Road and Utility Easement
5	40' Wide Access and Utility Easement

NOTE: ILLUSTRATION IS CONCEPTUAL ONLY AND IS SUBJECT TO CHANGE BASED UPON FURTHER DETAILED ANALYSIS, ENGINEERING DESIGN, AND FINAL APPROVAL. CSRS, INC. IS NOT LIABLE FOR THE USE OR MISUSE, MISINTERPRETATION, OR ERRORS IN ANY CALCULATIONS DERIVED FROM ILLUSTRATED CONCEPTUAL LAYOUT.



Terre Haute Site

St. John the Baptist Parish, LA
May 2021

