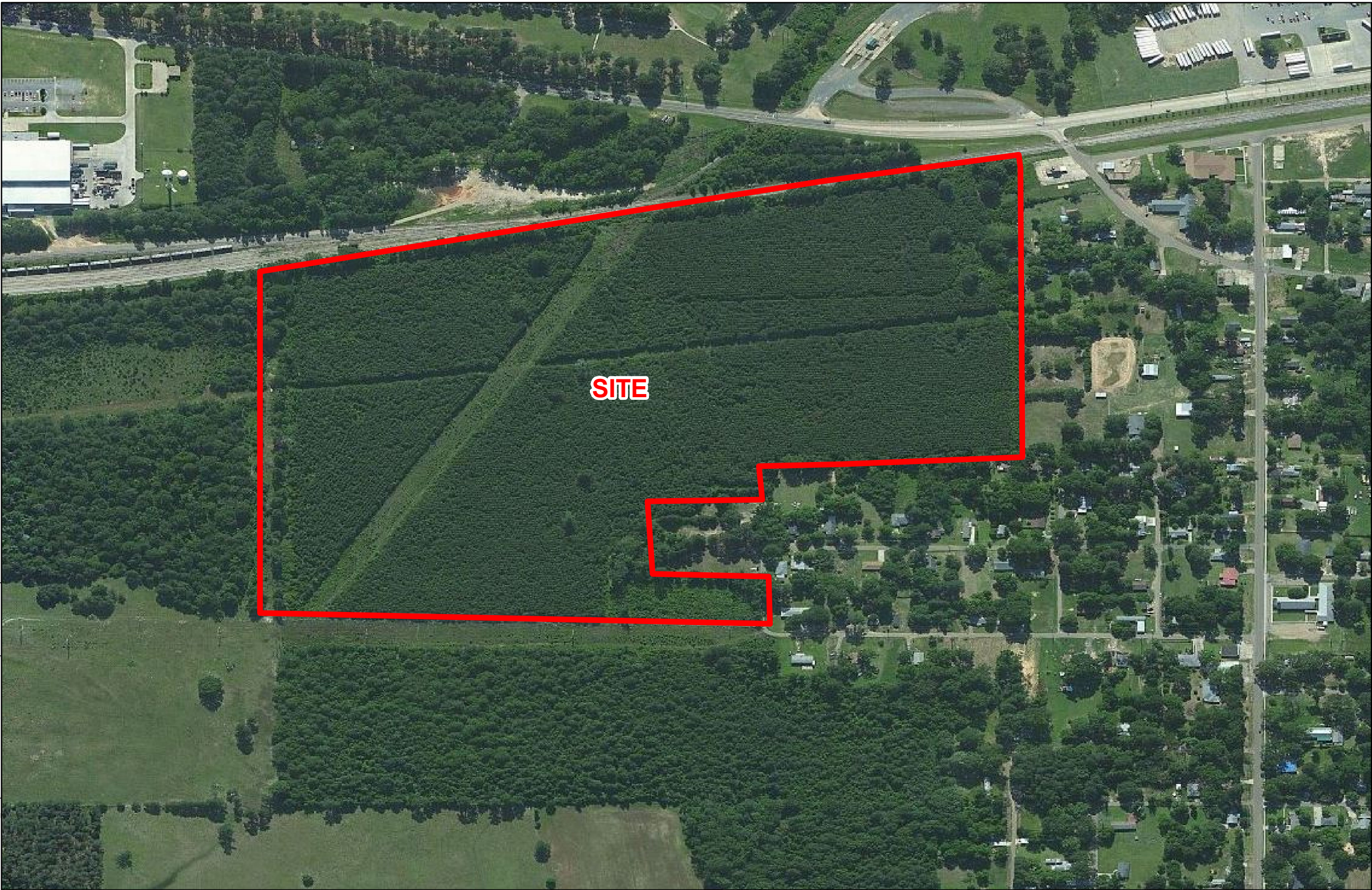


Exhibit Y. North Webster Parish Industrial District Site Oblique Aerial Photo Map



2013 Aerial Imagery
NWPID Site
Webster Parish, LA

NWPID

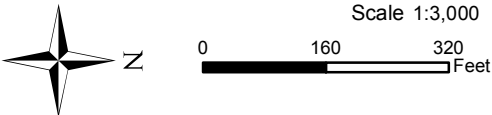
Webster Parish

Legend

Site Boundary
(61.33 Acres +/-)

P:\215040\CAD\GIS templates\GIS\Exhibit Y. NWPID Site Oblique Aerial Photo Map.mxd

- General Notes:
1. No attempt has been made by CSRS, Inc. to verify site boundary, title, actual legal ownership, deed restrictions, servitudes, easements, or other burdens on the property, other than that furnished by the client or his representative.
 2. Transportation data from 2013 TIGER datasets via U.S. Census Bureau at <ftp://ftp2.census.gov/geo/tiger/TIGER2013>.
 3. 2013 aerial imagery from Bing Maps and may not reflect current ground conditions.



**NORTH WEBSTER PARISH
INDUSTRIAL DISTRICT**

Date:	12/10/2015
Project Number:	215040
Drawn By:	AMB
Checked By:	JAY

CSRS
IMAGINE SHAPE DELIVER

6767 Perkins Road Suite 200 Baton Rouge, LA 70808
Telephone: 225 769-0546 Fax: 225 767-0060
www.csrsonline.com