

Exhibit BB. Jamestown Business Park All Utilities Infrastructure Map

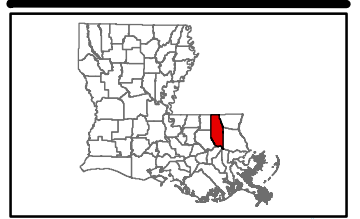


GREATER NEW ORLEANS
INC
REGIONAL ECONOMIC DEVELOPMENT

Jamestown Business Park All Utilities Infrastructure Map

Jamestown Business Park
Tangipahoa Parish, LA

GNO

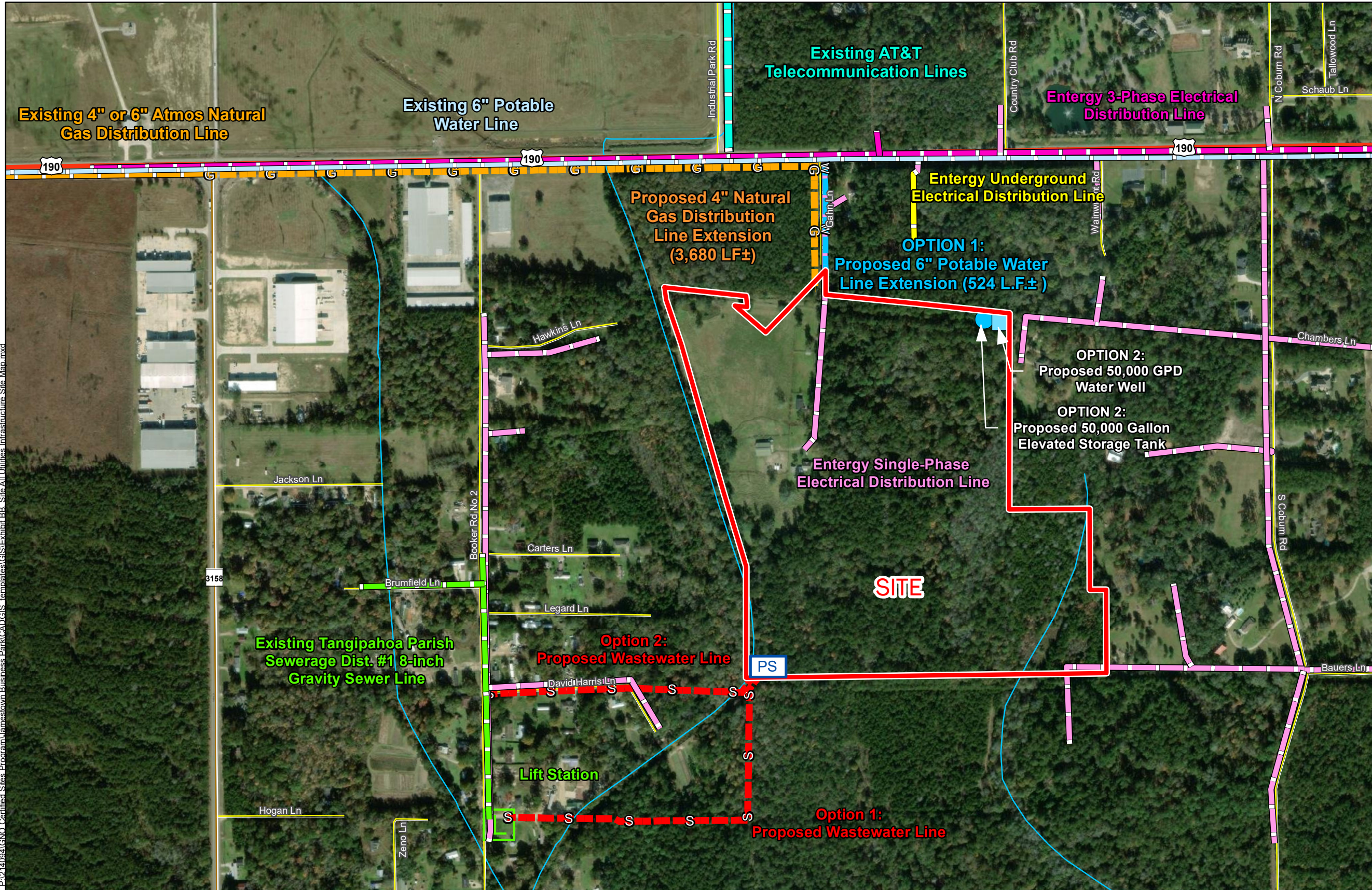


LEGEND

- Site Boundary (71.46 Ac.±)
- Proposed 50,000 Gallon Elevated Storage Tank
- Proposed 50,000 GPD Water Well
- Tangipahoa Water District Potable Water Infrastructure**
- Existing 6-inch Potable Water Line
- Proposed 6-inch Potable Water Line
- Atmos Natural Gas Distribution Lines**
- Existing 4-inch or 6-inch Atmos Natural Gas Line
- Proposed 6-inch Atmos Natural Gas Line
- Proposed Wastewater Lines
- PS Pump Station
- Tangipahoa Parish Sewerage Dist. #1 Gravity Sewer
- L Lift Station
- AT&T Telecommunication Lines
- Existing Entergy Electrical Distribution Lines**
- Single-Phase
- Three-Phase
- Underground
- Local Roads
- Existing Roadway
- US Highway
- Rural State Highway
- Stream



Date: 10/3/2021
Project Number: 214094
Drawn By: SEW
Checked By: EEB



General Notes:
 1. No attempt has been made by CSRS, Inc. to verify site boundary, title, actual legal ownership, deed restrictions, servitudes, easements, or other burdens on the property, other than that furnished by the client or his representative.
 2. Transportation data from 2013 TIGER datasets via U.S. Census Bureau at <ftp://ftp2.census.gov/geo/tiger/TIGER2013>.
 3. 2015 aerial imagery from USDA-APFO National Agricultural Inventory Project (NAIP) and may not reflect current ground conditions.
 4. Utility information from visual inspection and/or the individual utility operators. Exact field location has not been determined by survey. The lines shown are an approximate representation only and may have been offset for depiction purposes.



P:\214094\GNO_Certified_Sites_Program\Jamestown Business Park\CAD\GIS_templates\GIS\Exhibit_BB_Site_All Utilities Infrastructure_Site_Map.mxd