

Exhibit C.

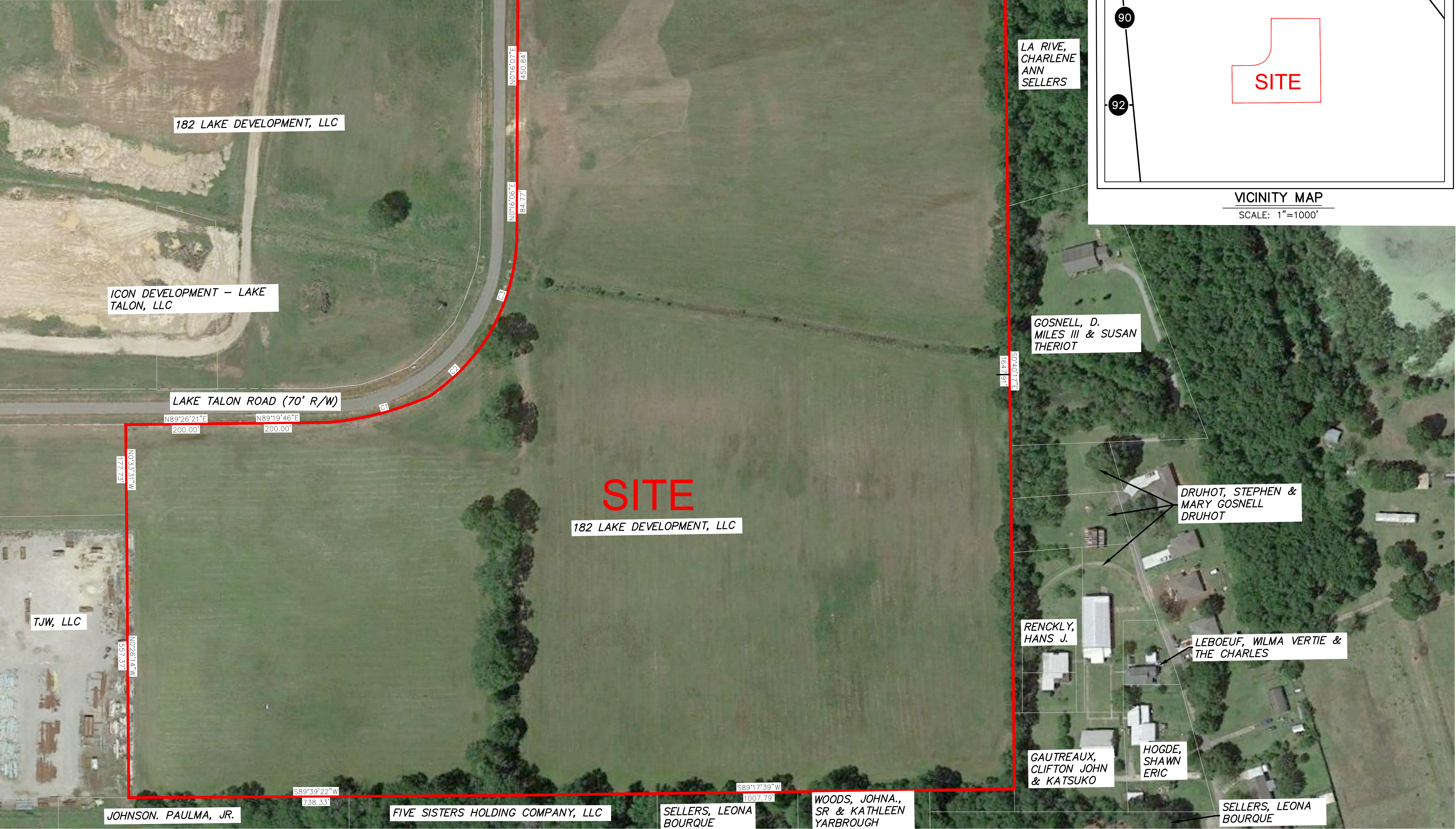
Spanish Trail Industrial Park

Property Boundary Aerial Exhibit



Spanish Trail Industrial Park Property Boundary Aerial Exhibit

CURVE TABLE					
NUMBER	RADIUS	ARC LENGTH	CHORD DIRECTION	CHORD LENGTH	DELTA ANGLE
C1	373.02'	215.26'	N71°36'18"E	212.29'	33°03'51"
C2	436.75'	136.08'	N41°20'50"E	135.53'	17°51'05"
C3	366.55'	210.63'	N16°43'49"E	207.74'	32°55'25"



GENERAL NOTES:

1. No attempt has been made by CSRS, Inc. to verify title, actual legal ownership, deed restrictions, servitudes, easements, or other burdens on the property, other than that furnished by the client or his representative.
2. Depicted exhibit based on Livingston Parish Clerk of Court Recordings researched from January 1, 1937 to October 6, 2019.
3. This is not a property boundary survey and is not intended to meet the Louisiana standards of practice for property boundary surveys. Bearings and distances of tracts were obtained from document referenced above.
4. The coordinate system used is NAD83 Louisiana State Plane South (US feet). Coordinates were derived by overlaying the boundary on an aerial photograph and are within 100' of true location.

CSRS

6767 Perkins Road, Suite 200
Baton Rouge, Louisiana 70808
Telephone: 225 769-0546
www.csrsinc.com

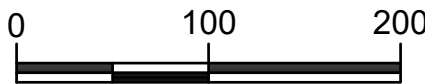
Project:

Spanish Trail
Industrial Park
St. Martin Parish, LA

Client:



SCALE: 1"=100'



Revisions:

#	Date	Description

Key Plan:

LEGEND

— SITE BOUNDARY
(49.74 AC. ±)

Sheet Title:

Property
Boundary Aerial
Exhibit

Date: February 2020

Project Number: 214002

Drawn By: KPH

Checked By: EEB

Sheet: