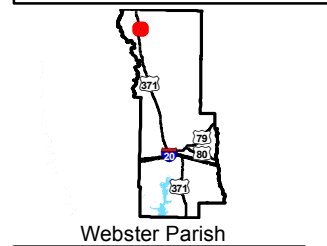
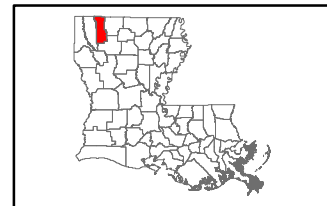


Exhibit S. North Webster Parish Industrial District Site Soils Conservation Service Map

NRCS Soils Map
NWPID Site
Webster Parish, LA

NWPID



Legend

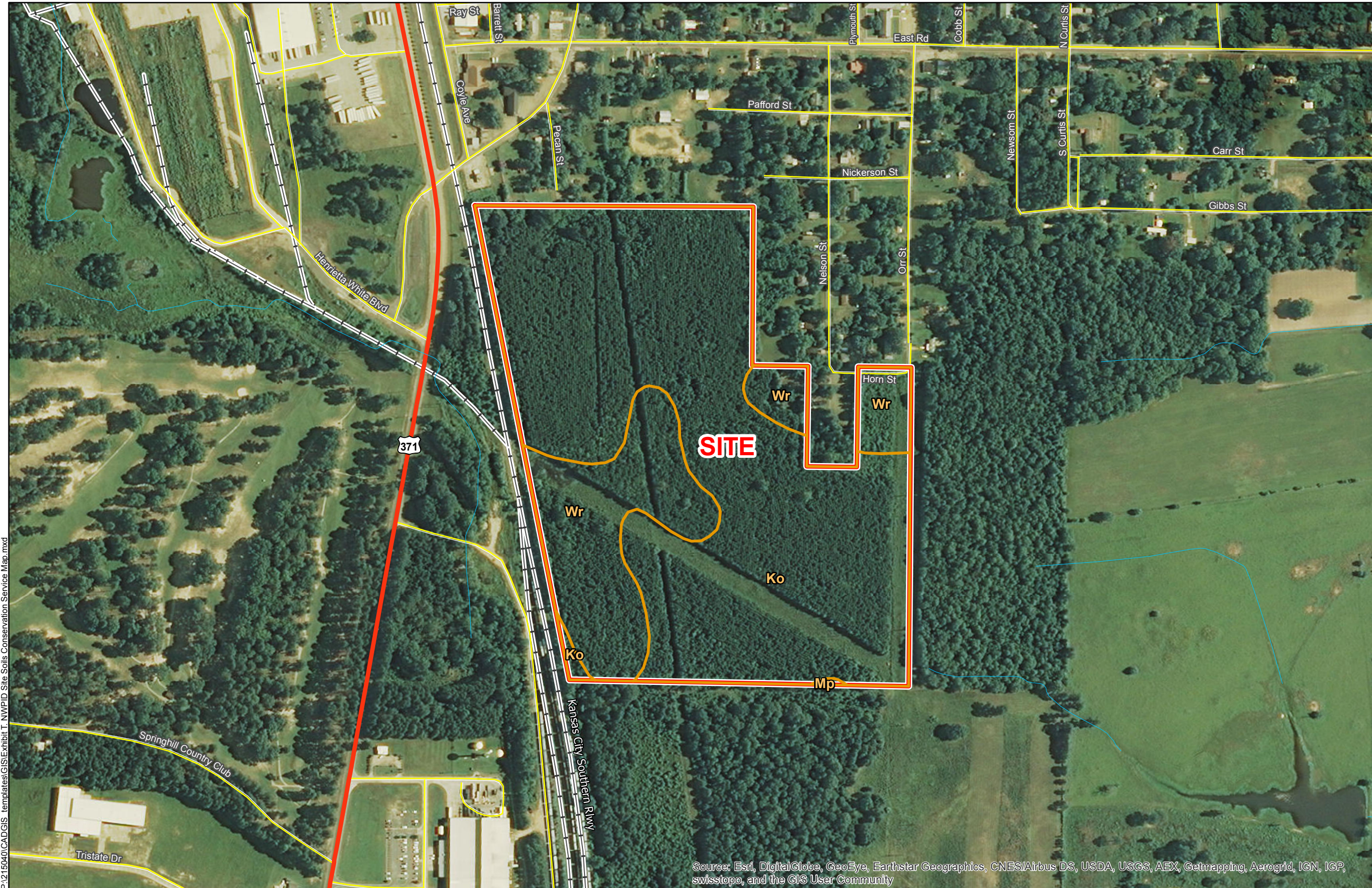
- Site Boundary (61.33 Acres +/-)
- See Soil Report for Definitions
- Existing Roadway**
 - US Highway
 - Local Roads
- Existing Railroad
- Waterbody
- Stream or River



**NORTH WEBSTER PARISH
INDUSTRIAL DISTRICT**

Date:	10/6/2015
Project Number:	215040
Drawn By:	AMB
Checked By:	JAY

CSRS
IMAGINE SHAPE DELIVER
6767 Perkins Road Suite 200 Baton Rouge, LA 70808
Telephone: 225 769-0546 Fax: 225 767-0060
www.csrsonline.com



General Notes:
1. No attempt has been made by CSRS, Inc. to verify site boundary, title, actual legal ownership, deed restrictions, servitudes, easements, or other burdens on the property, other than that furnished by the client or his representative.
2. Transportation data from 2013 TIGER datasets via U.S. Census Bureau at <http://ftp2.census.gov/geo/tiger/TIGER2013>.
3. Soils data from USDA SSURGO website: <http://websoilsurvey.sc.egov.usda.gov/App/WebSoilSurvey.aspx>
4. Aerial imagery from 2015 Esri World Imagery and may not reflect current ground conditions.



Scale 1:5,000
0 260 520 Feet

P:\215040\CAD\GIS templates\GIS\Exhibit T NWPID Site Soils Conservation Service Map.mxd

Source: Esri, DigitalGlobe, GeoEye, Earthstar Geographics, CNES/Airbus DS, USDA, USGS, AEX, Getmapping, Aerogrid, IGN, IGP, swisstopo, and the GIS User Community